



38 Dunnock Road

Corby, Northamptonshire NN18 8FP



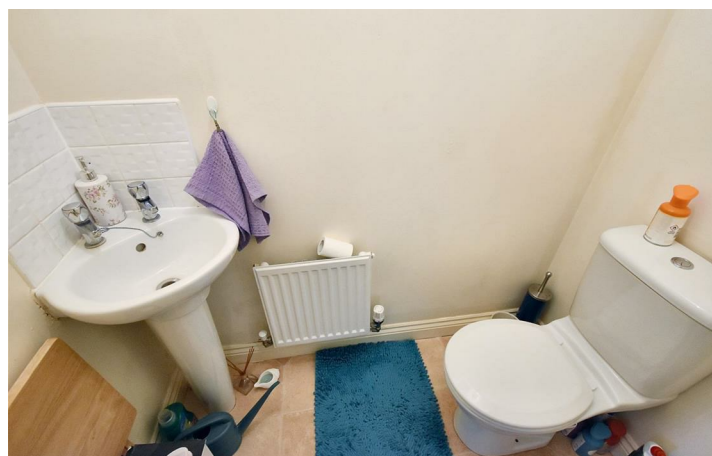
**Simpson West**

Situated overlooking a green on the ever popular Oakley Vale area of Corby sits this very well presented two bedroom terraced house within close proximity to all local amenities. The property proudly boasts entrance hall, downstairs WC, open plan kitchen/ living area with appliances included. Upstairs there is a master bedroom with fitted wardrobes, a second single bedroom with fitted wardrobes and a family bathroom. Outside is an enclosed rear garden and allocated OFF ROAD PARKING. Energy Rating C. Council Tax Band B.



£850 PCM

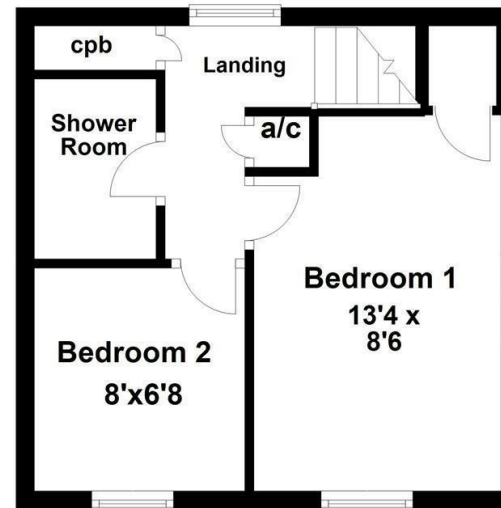
2 1 nul



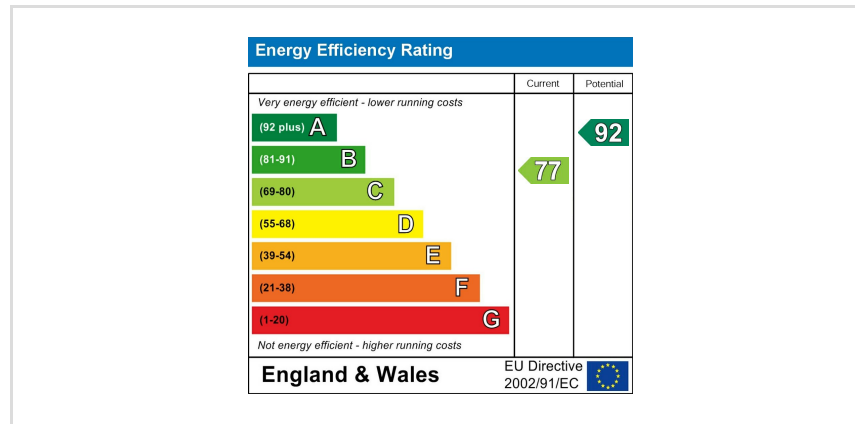
### Ground Floor



### First Floor



Floor plan not to scale - for guidance purposes only.  
Plan produced using PlanUp.



When you buy with Simpson West, you know **you'll be in safe hands**. From the moment you walk through our doors, we'll make you **feel truly welcome**. Our sales consultants and financial advisors will take you through **every step of the process**, offering **free expert advice** along the way, from help choosing the right mortgage and insurance through to finding your conveyancer. And if you need help selling your home too, **with over 20 years of local experience, you can trust us to get you moving**.



**Simpson  
West**

Making Every  
Journey Personal



01536 202007

[info@simpsonwest.co.uk](mailto:info@simpsonwest.co.uk)

<https://www.simpsonwest.co.uk/>

64 Corporation Street, Corby, Northants, NN17 1NH