



2 Denne Close
Corby, Northants NN18 8NP

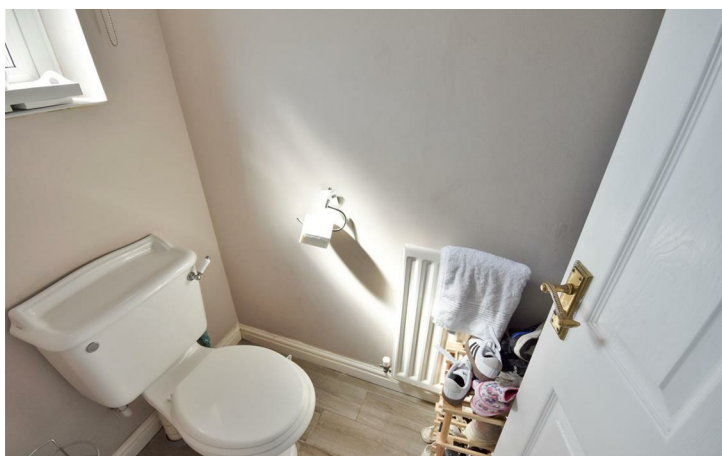


A well presented three bedroom detached house situated on the popular Poppyfields area of Corby. The property offers entrance hall, guest cloakroom, kitchen with built in oven and hob, a good sized lounge with a storage cupboard and feature fireplace, doors leading to a conservatory. Upstairs there is a main bedroom with built in wardrobes, second double bedroom, a third single bedroom and a family bathroom with a shower over the bath. Outside is a delightful landscaped garden with a raised decking area. To the front there is a driveway leading to a single garage. Energy Rating C. Council Tax Band C.



£1,200 PCM

3 0 0





Energy Efficiency Rating		
	Current	Potential
<i>Very energy efficient - lower running costs</i>		
(92 plus) A		
(81-91) B		
(69-80) C		
(55-68) D		
(39-54) E		
(21-38) F		
(1-20) G	1	1
<i>Not energy efficient - higher running costs</i>		
England & Wales	EU Directive 2002/91/EC	



When you buy with Simpson West, you know **you'll be in safe hands**. From the moment you walk through our doors, we'll make you **feel truly welcome**. Our sales consultants and financial advisors will take you through **every step of the process**, offering **free expert advice** along the way, from help choosing the right mortgage and insurance through to finding your conveyancer. And if you need help selling your home too, **with over 20 years of local experience, you can trust us to get you moving**.



**Simpson
West**

Making Every
Journey Personal



01536 202007

info@simpsonwest.co.uk

<https://www.simpsonwest.co.uk/>

64 Corporation Street, Corby, Northants, NN17 1NH