



43A Wheatley Avenue
Corby, Northants NN17 1TF



Simpson West

Simpson West Lettings are pleased to offer for rent this very rarely available individually built three bedroom detached house. The property offers entrance hall, downstairs cloakroom, under stairs storage, very stylish open plan living/ kitchen with built in oven and hob, and patio doors leading to a rear garden. Upstairs proudly boasts a master bedroom with an en-suite shower room, two further bedrooms and a family bathroom. To the rear is a terraced patio area with steps down to a lawned area. To the front is a block paved driveway and a garage with a utility area leading to the kitchen. The property is offered with ceramic floor tiling throughout on the ground floor and laminate flooring on the first floor. Viewing is highly recommended. Energy Rating C. Council Tax band C.

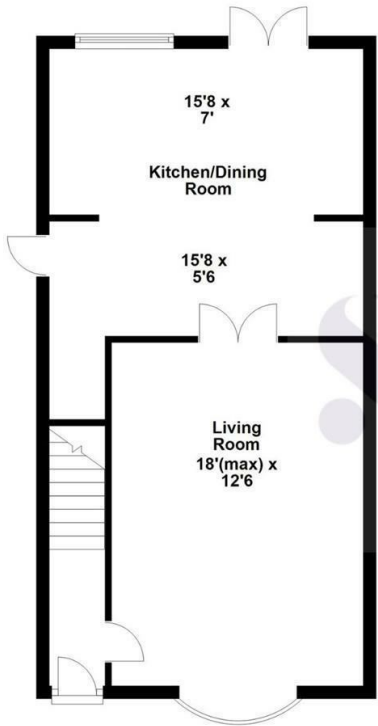


£1,100 PCM

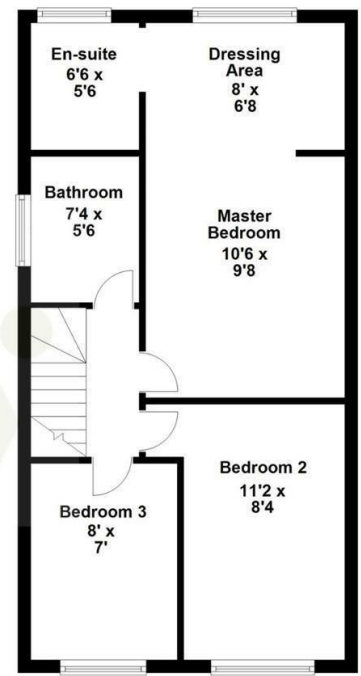
 3  2  1



Ground Floor



First Floor



Floor plan not to scale - for guidance purposes only.
Floor plan created by Simpson West for their use.
Plan produced using PlanUp.



Energy Efficiency Rating		
	Current	Potential
<i>Very energy efficient - lower running costs</i>		
(92 plus) A		
(81-91) B		
(69-80) C		
(55-68) D		
(39-54) E		
(21-38) F		
(1-20) G	1	1
<i>Not energy efficient - higher running costs</i>		
England & Wales	EU Directive 2002/91/EC	



When you buy with Simpson West, you know **you'll be in safe hands**. From the moment you walk through our doors, we'll make you **feel truly welcome**. Our sales consultants and financial advisors will take you through **every step of the process**, offering **free expert advice** along the way, from help choosing the right mortgage and insurance through to finding your conveyancer. And if you need help selling your home too, **with over 20 years of local experience, you can trust us to get you moving**.



**Simpson
West**

Making Every
Journey Personal



01536 202007

info@simpsonwest.co.uk

<https://www.simpsonwest.co.uk/>

64 Corporation Street, Corby, Northants, NN17 1NH