



2 Leicester Close  
Corby, NN18 8QJ



**Simpson West**



Simpson West are delighted to offer to the market for sale with NO CHAIN This impressive four bedroom detached house located on the popular Oakley Vale area and situated in a pleasant position and close to local schools, public transport and open green spaces. The spacious & flexible accommodation over two floors is perfect for any growing family. This property has a driveway for several vehicles to the front which leads to an integral garage, there is also a small hedge enclosed front garden. To the ground floor there is a spacious living room with french doors to the garden, a fully fitted kitchen and a separate dining room. There is also a handy cloaks/WC which is essential for any family. The garage can also be accessed via the hallway via a courtesy door. To the first floor there is large L- shaped landing where you will find doors to the family bathroom and four very good size bedrooms. The master bedroom also enjoys a four piece en suite bathroom. The fully enclosed private L- shaped garden is perfect for entertaining with a patio and has access to the front via a side access gate.

Early viewings are highly advised to avoid missing out on this fantastic family home.

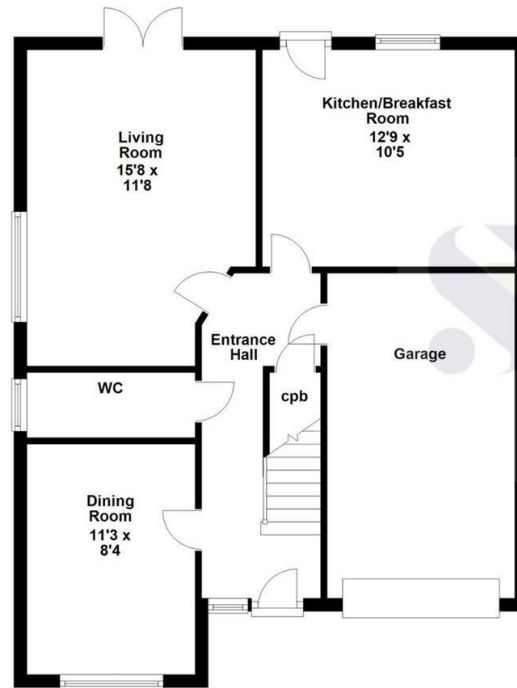
Energy Rating C. Council Tax Band D.



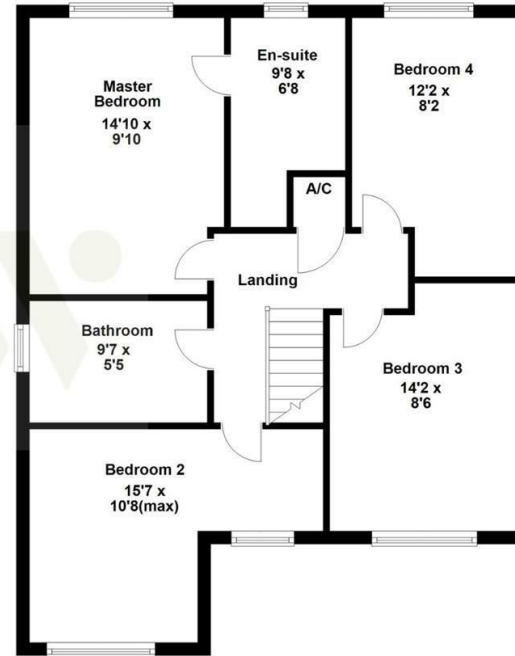
£315,000



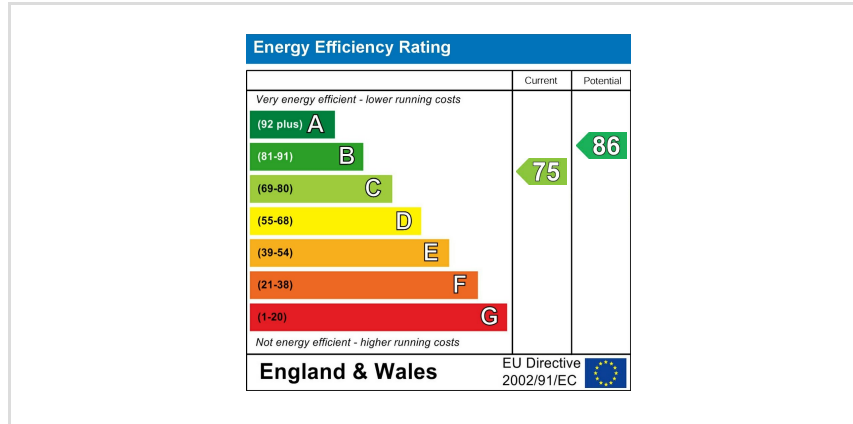
### Ground Floor



### First Floor



Floor plan not to scale - for guidance purposes only.  
 Floor plan created by Simpson West for their use.  
 Plan produced using PlanUp.



When you buy with Simpson West, you know **you'll be in safe hands**. From the moment you walk through our doors, we'll make you **feel truly welcome**. Our sales consultants and financial advisors will take you through **every step of the process**, offering **free expert advice** along the way, from help choosing the right mortgage and insurance through to finding your conveyancer. And if you need help selling your home too, **with over 20 years of local experience, you can trust us to get you moving**.



**Simpson  
West**

Making Every  
Journey Personal



01536 202007

[info@simpsonwest.co.uk](mailto:info@simpsonwest.co.uk)

<https://www.simpsonwest.co.uk/>

64 Corporation Street, Corby, Northants, NN17 1NH