



38 Rose Close
Corby, NN18 8PA

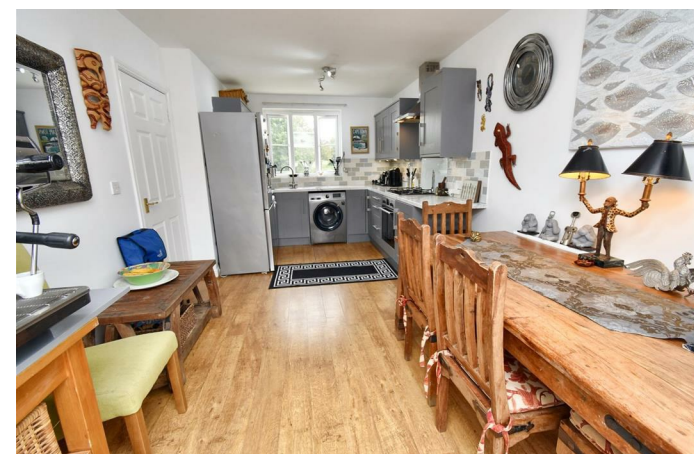


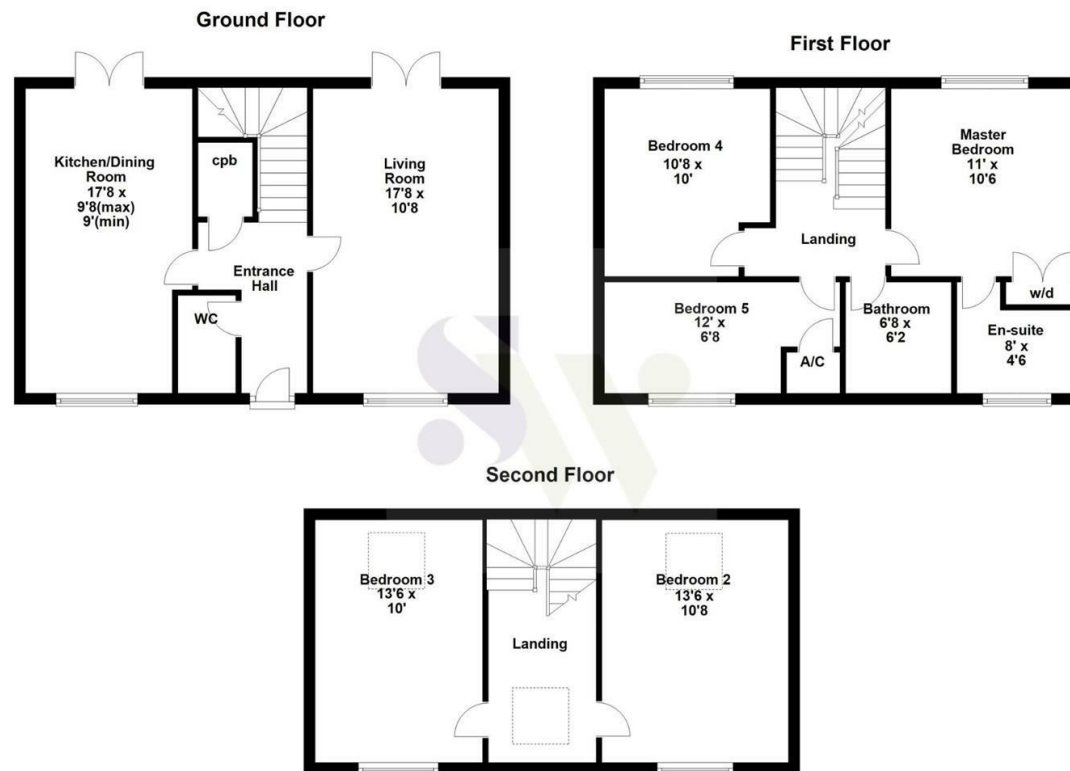
Simpson West

Occupying a highly attractive position within the much sought after Oakley Vale area is this rarely available FIVE BEDROOMED property which provides deceptively spacious accommodation over three floors. Overlooking green space to the front, this superb home is being offered for sale with NO CHAIN. On entering the property you will be greeted by an imposing reception hall, cloakroom/WC, living room and a refitted kitchen/dining room complete with integrated appliances. The first floor provides three bedrooms with the master boasting fitted wardrobes and en-suite facilities. There is also a family bathroom. The second floor offers two further double bedrooms. Outside, there is an attractive enclosed frontage whilst the rear leads with a patio area with a pizza oven and lawn. A gate provides access to the parking area which could house up to 4 vehicles and GARAGE. An early visit is highly advised! Energy Rating C. Council Tax Band C.

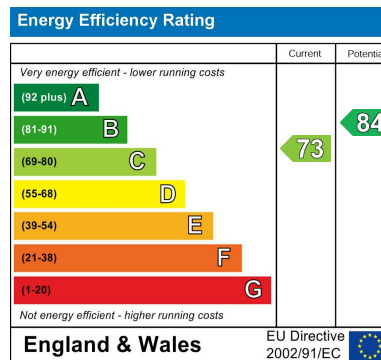


£299,950





Floor plan not to scale - for guidance purposes only.
 Floor plan created by Simpson West for their use.
 Plan produced using PlanUp.



When you buy with Simpson West, you know **you'll be in safe hands**. From the moment you walk through our doors, we'll make you **feel truly welcome**. Our sales consultants and financial advisors will take you through **every step of the process**, offering **free expert advice** along the way, from help choosing the right mortgage and insurance through to finding your conveyancer. And if you need help selling your home too, **with over 20 years of local experience, you can trust us to get you moving**.



**Simpson
West**

Making Every
Journey Personal



01536 202007

info@simpsonwest.co.uk

<https://www.simpsonwest.co.uk/>

64 Corporation Street, Corby, Northants, NN17 1NH