



21 Outfield Close
Corby, NN18 8FX



Simpson West

Simpson West are delighted to offer to the rental market this deceptively spacious four bedroom detached home situated on the highly sought after estate of Great Oakley. The property itself is within walking distance to local bus links and a superstore. Features include a bay fronted lounge, spacious kitchen dining room which boasts integrated appliances such as dishwasher and fridge freezer, utility room with fitted washing machine and a downstairs w/c. To the first floor there is the main family bathroom benefitting from a three piece suite and jacuzzi bath, a double bedroom and the master bedroom which features a walk in wardrobe leading to an en-suite shower room. To the second floor are a further two double bedrooms with a shower room off the landing. To the rear is a low maintenance garden with an elevated decking area which is secluded and sheltered via a pergola. The front is low maintenance and is laid mainly to lawn and shrubbery. There is also a detached single garage with off road parking to the front. Early viewings are highly advised to avoid missing out on this superb family home! Energy Rating C. Council Tax Band D.

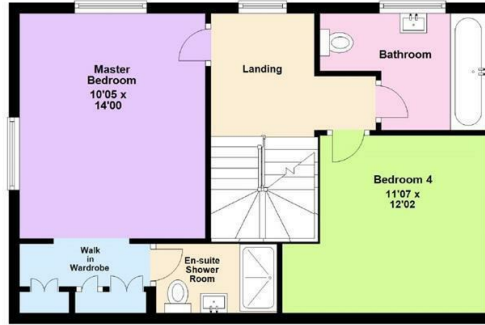


£1,600 Per Calendar Month

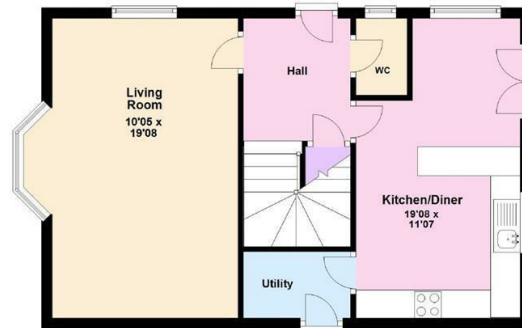
 4  3  nul



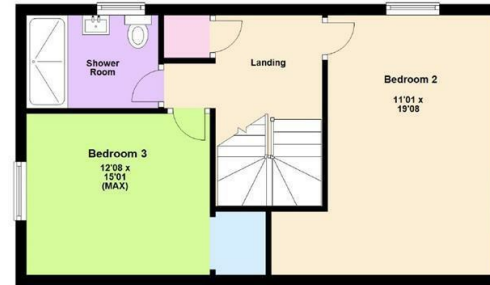
First Floor



Ground Floor



Second Floor



Floor plan not to scale - for guidance purposes only.
Plan produced using PlanUp.



Energy Efficiency Rating

	Current	Potential
<i>Very energy efficient - lower running costs</i>		
(92 plus) A		
(81-91) B		
(69-80) C		
(55-68) D		
(39-54) E		
(21-38) F		
(1-20) G		
<i>Not energy efficient - higher running costs</i>		
England & Wales	EU Directive 2002/91/EC	



When you buy with Simpson West, you know **you'll be in safe hands**. From the moment you walk through our doors, we'll make you **feel truly welcome**. Our sales consultants and financial advisors will take you through **every step of the process**, offering **free expert advice** along the way, from help choosing the right mortgage and insurance through to finding your conveyancer. And if you need help selling your home too, **with over 20 years of local experience, you can trust us to get you moving**.



**Simpson
West**

Making Every
Journey Personal



01536 202007

info@simpsonwest.co.uk

<https://www.simpsonwest.co.uk/>

64 Corporation Street, Corby, Northants, NN17 1NH