



13 Lavender Close

Corby, Northamptonshire NN18 8NX



Simpson West

Simpson West are delighted to offer for sale this three bedroomed detached property set in this quiet cul de sac in Oakley Vale. Features include ground floor cloakroom/WC, large lounge, separate dining room and a brand new kitchen. To the first floor are three bedrooms with the master benefitting from ensuite facilities. There is also a brand new family bathroom. Outside a driveway provides off road parking whilst to the rear a large patio leads to a lawned garden. Viewing is highly recommended. Energy Rating C. Council Tax Band C.

£260,000



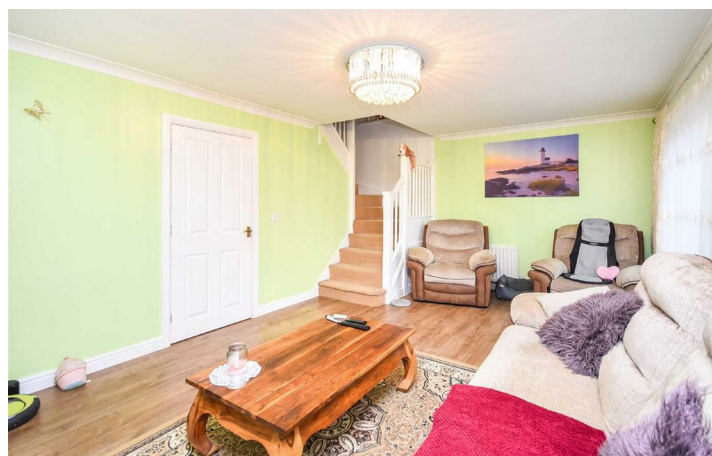
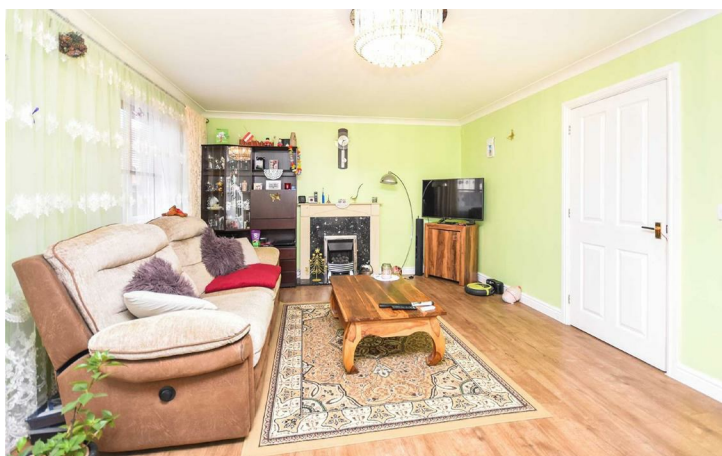
3



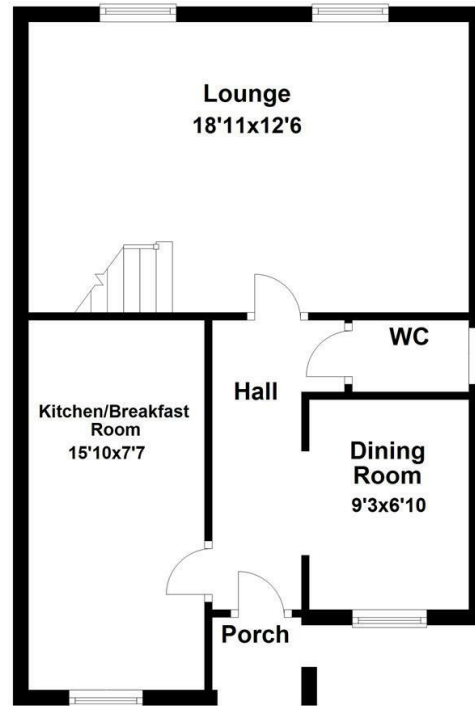
2



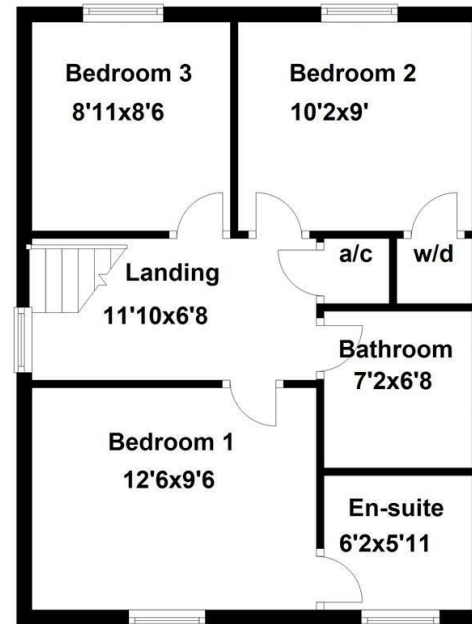
2



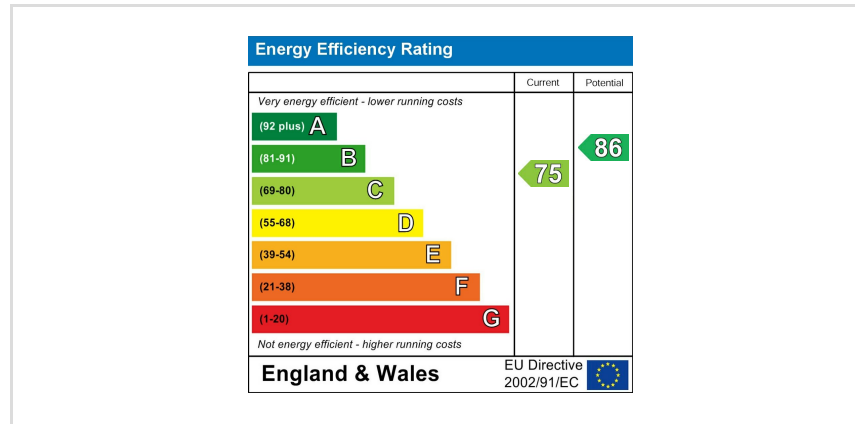
Ground Floor



First Floor



Floor plan not to scale - for guidance purposes only.
Plan produced using PlanUp.



When you buy with Simpson West, you know **you'll be in safe hands**. From the moment you walk through our doors, we'll make you **feel truly welcome**. Our sales consultants and financial advisors will take you through **every step of the process**, offering **free expert advice** along the way, from help choosing the right mortgage and insurance through to finding your conveyancer. And if you need help selling your home too, **with over 20 years of local experience, you can trust us to get you moving**.



**Simpson
West**

Making Every
Journey Personal



01536 202007

info@simpsonwest.co.uk

<https://www.simpsonwest.co.uk/>

64 Corporation Street, Corby, Northants, NN17 1NH