



15 Seaton Crescent
Corby, Northants NN18 8BZ



Simpson West

Simpson West Lettings are delighted to offer for rent this extremely spacious, recently renovated three bedroom house located on the Exeter estate in Corby within close proximity to all local amenities. The property briefly comprises entrance hall, large lounge/dining room, kitchen and downstairs WC. Upstairs benefits three large bedrooms one with built in storage units and a family bathroom. Outside there are beautiful gardens laid to lawn to both the front and rear. Energy Rating D. Council Tax Band A.

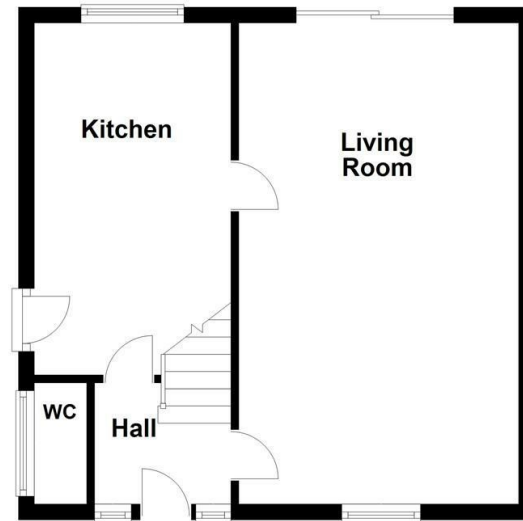


£1,100 PCM

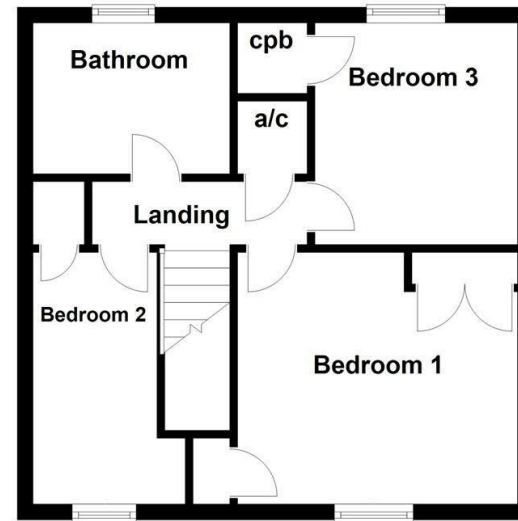
 3  1  nul



Ground Floor



First Floor



Total area: approx. 808.9 sq. feet

Floor plan not to scale - for guidance purposes only.
 Floor plan created by Simpson West for their use.
 Plan produced using PlanUp.



Energy Efficiency Rating		
	Current	Potential
Very energy efficient - lower running costs		
(92 plus) A		
(81-91) B		
(69-80) C		
(55-68) D		
(39-54) E		
(21-38) F		
(1-20) G	1	1
Not energy efficient - higher running costs		
England & Wales	EU Directive 2002/91/EC	



When you buy with Simpson West, you know **you'll be in safe hands**. From the moment you walk through our doors, we'll make you **feel truly welcome**. Our sales consultants and financial advisors will take you through **every step of the process**, offering **free expert advice** along the way, from help choosing the right mortgage and insurance through to finding your conveyancer. And if you need help selling your home too, **with over 20 years of local experience, you can trust us to get you moving**.



**Simpson
West**

Making Every
Journey Personal



01536 202007

info@simpsonwest.co.uk

<https://www.simpsonwest.co.uk/>

64 Corporation Street, Corby, Northants, NN17 1NH