



8 Flaxland Way
Corby, NN17 5GA



Simpson West

Located within the highly regarded Priors Hall Park is this executive FOUR bedroom detached residence built by David Wilson Homes that is being offered to the market for sale with no onward chain. The property itself enjoys a pleasant position looking out onto a large greenbelt and is within walking distance to the local school, shops and other amenities. Features include an entrance hall, cloakroom w/c, living room with bay window and the impressive kitchen dining family room with doors leading to the rear garden as well as a utility room. To the first floor there are four large double bedrooms with three boasting fitted wardrobes and the larger an en-suite shower room, in addition there is the main bathroom complete with a four piece suite. To the rear of the property is a large fully enclosed garden with patio area and lawn. To the front is a large driveway leading to a single integral garage. Early viewings are highly encouraged. Energy rating B. Urban and Civic estate charge applicable of approx £286 per annum. Council Tax Band D.

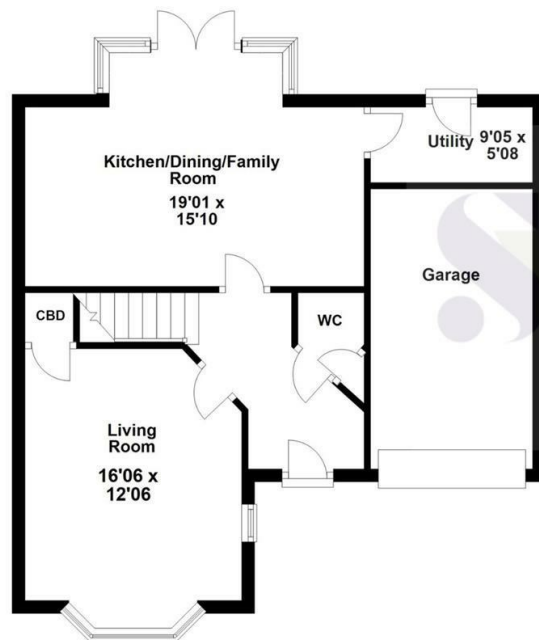


£385,000

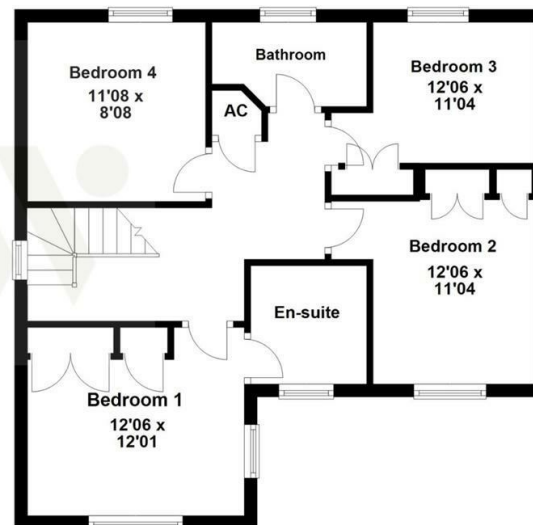
 4  2  1



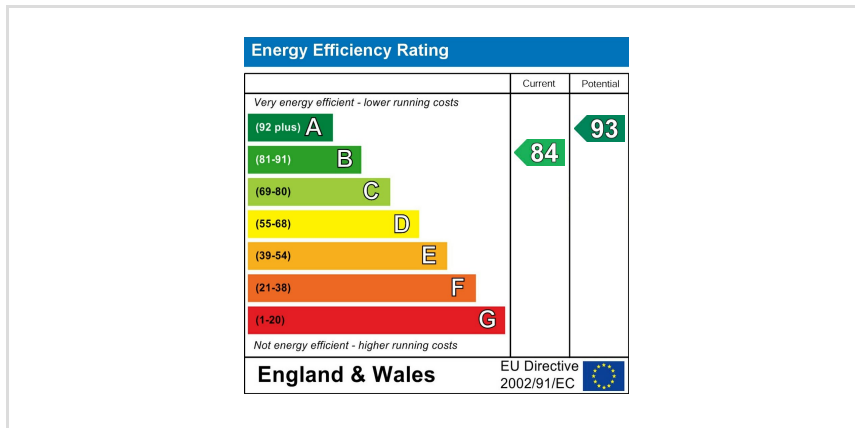
Ground Floor



First Floor



Floor plan not to scale - for guidance purposes only.
 Floor plan created by Simpson West for their use.
 Plan produced using PlanUp.



When you buy with Simpson West, you know **you'll be in safe hands**. From the moment you walk through our doors, we'll make you **feel truly welcome**. Our sales consultants and financial advisors will take you through **every step of the process**, offering **free expert advice** along the way, from help choosing the right mortgage and insurance through to finding your conveyancer. And if you need help selling your home too, **with over 20 years of local experience, you can trust us to get you moving**.



**Simpson
West**

Making Every
Journey Personal



01536 202007

info@simpsonwest.co.uk

<https://www.simpsonwest.co.uk/>

64 Corporation Street, Corby, Northants, NN17 1NH