



14 Folkestone Drive

Corby, Northamptonshire NN18 8GZ



**Simpson West**

Simpson West are delighted to offer to the market for sale with no onward chain this THREE bedroom semi detached residence that is located within the popular Oakley Vale area. The property itself occupies an enviable position being nestled away within a quiet cul-de-sac and is within walking distance to the local schools, shops and other amenities. Features include an entrance hall, cloakroom w/c and impressive open plan kitchen living dining room with doors leading to the rear garden. To the first floor there are two large double bedrooms, with the larger boasting an en-suite shower room, in addition there is a single bedroom and the main family bathroom. To the rear is a low maintenance garden that is fully enclosed with a patio area. To the side of the property is allocated off road parking. Early viewings are highly encouraged. Energy rating C. Council Tax Band B.

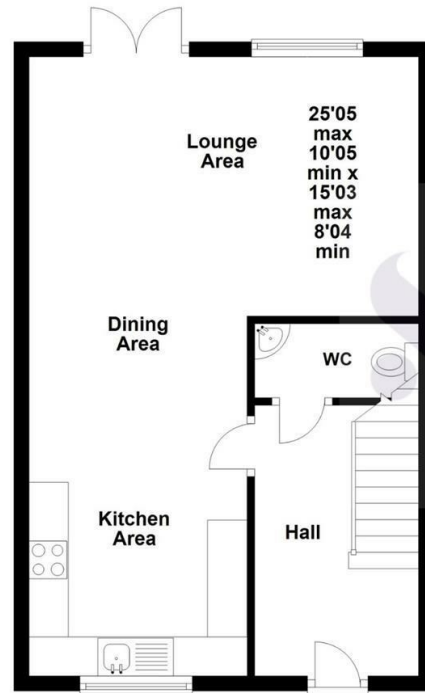


£219,950

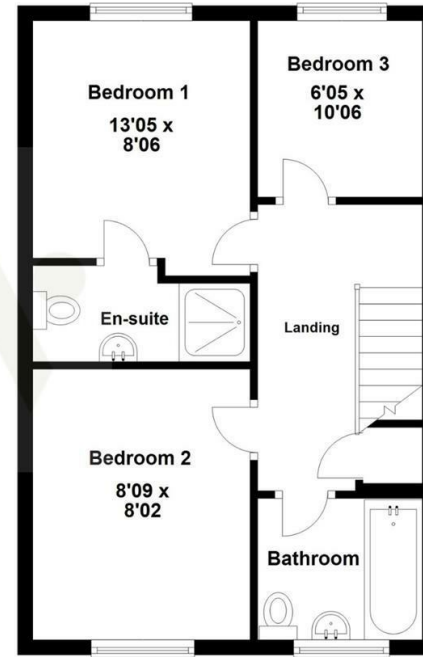
 3  2  1



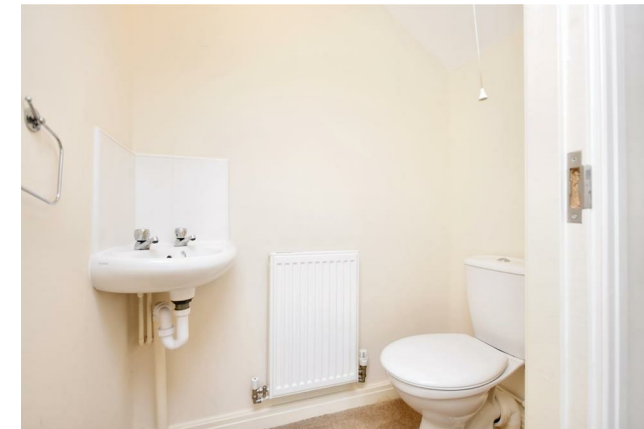
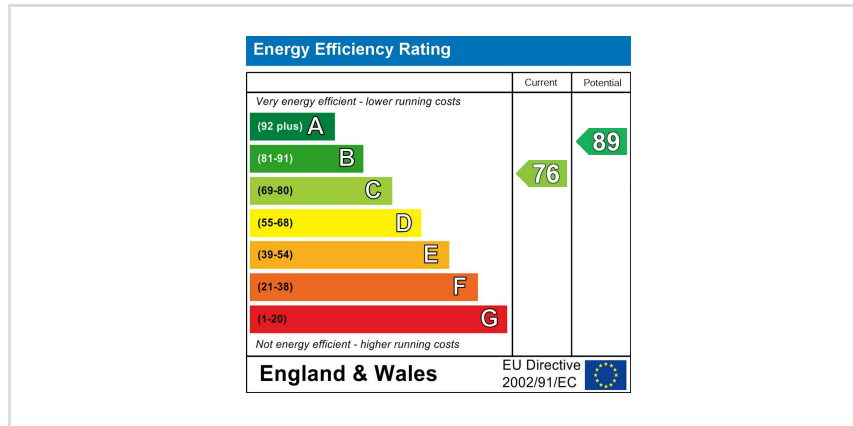
### Ground Floor



### First Floor



Floor plan not to scale - for guidance purposes only.  
 Floor plan created by Simpson West for their use.  
 Plan produced using PlanUp.



When you buy with Simpson West, you know **you'll be in safe hands**. From the moment you walk through our doors, we'll make you **feel truly welcome**. Our sales consultants and financial advisors will take you through **every step of the process**, offering **free expert advice** along the way, from help choosing the right mortgage and insurance through to finding your conveyancer. And if you need help selling your home too, **with over 20 years of local experience, you can trust us to get you moving**.



**Simpson  
West**

Making Every  
Journey Personal



01536 202007

[info@simpsonwest.co.uk](mailto:info@simpsonwest.co.uk)

<https://www.simpsonwest.co.uk/>

64 Corporation Street, Corby, Northants, NN17 1NH