



361 Lyveden Way

Corby, Northamptonshire NN18 8PH



Simpson West



NO CHAIN!!!

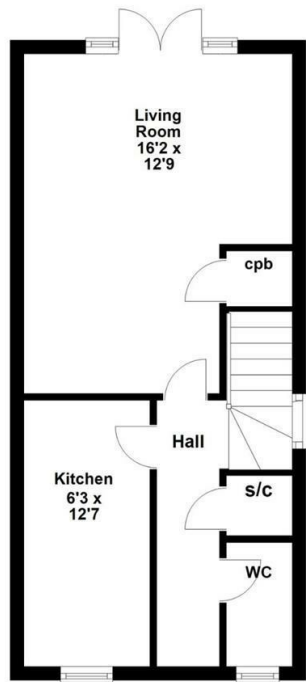
A modern three bedroomed, three storey town house situated within the popular Oakley Vale area of Corby. Accommodation comprises of ground floor cloakroom/WC, sitting room and kitchen. To the first floor are two bedrooms and a family bathroom whilst to the second floor there is a master bedroom with en suite facilities and a dressing room. Further benefits includes a NEW BOILER with 9 years warranty, double glazing, gas radiator central heating, enclosed rear garden, off road parking and a single garage. Viewing is highly recommended. Energy Rating C. Council Tax Band C.

£225,000

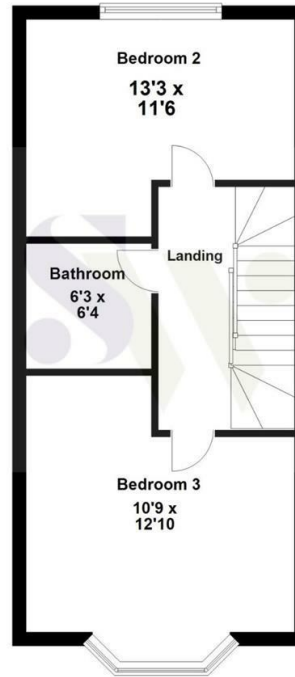
 3    2    1



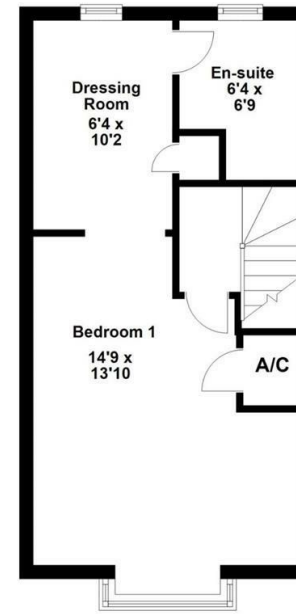
### Ground Floor



### First Floor



### Second Floor



Floor plan not to scale - for guidance purposes only.  
Floor plan created by Simpson West for their use.  
Plan produced using PlanUp.



### Energy Efficiency Rating

	Current	Potential
<i>Very energy efficient - lower running costs</i>		
(92 plus) <b>A</b>		
(81-91) <b>B</b>		
(69-80) <b>C</b>		
(55-68) <b>D</b>		
(39-54) <b>E</b>		
(21-38) <b>F</b>		
(1-20) <b>G</b>		
<i>Not energy efficient - higher running costs</i>		
<b>England &amp; Wales</b>	EU Directive 2002/91/EC	

77

88



When you buy with Simpson West, you know **you'll be in safe hands**. From the moment you walk through our doors, we'll make you **feel truly welcome**. Our sales consultants and financial advisors will take you through **every step of the process**, offering **free expert advice** along the way, from help choosing the right mortgage and insurance through to finding your conveyancer. And if you need help selling your home too, **with over 20 years of local experience, you can trust us to get you moving**.



**Simpson  
West**

Making Every  
Journey Personal



01536 202007

[info@simpsonwest.co.uk](mailto:info@simpsonwest.co.uk)

<https://www.simpsonwest.co.uk/>

64 Corporation Street, Corby, Northants, NN17 1NH