



14 Rockingham Mews
Corby, Northamptonshire NN17 1BB



Simpson West

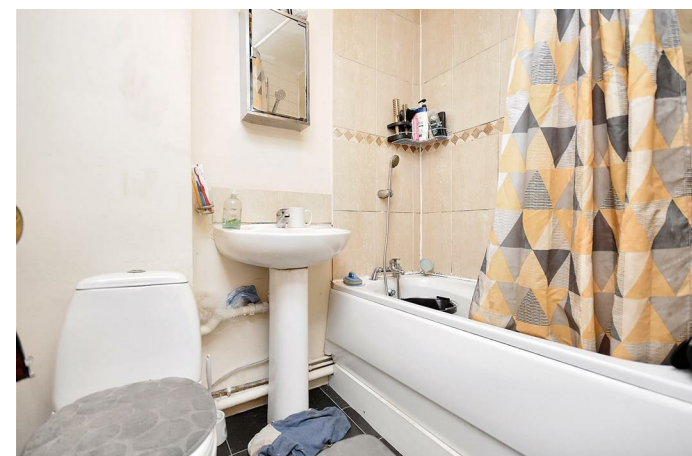
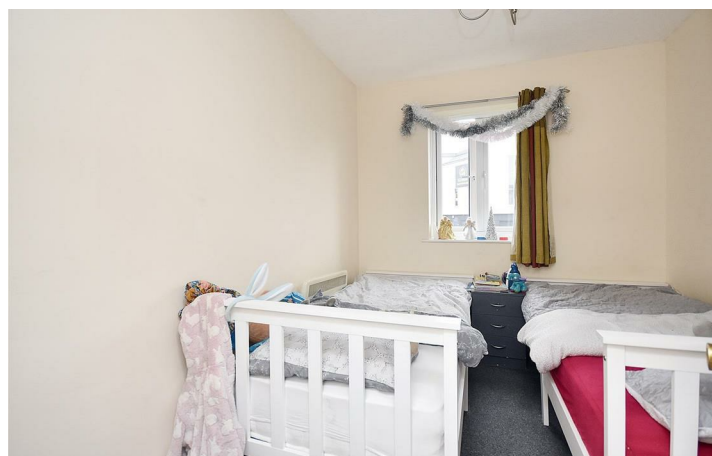
Simpson West are delighted to offer to the market for sale with no onward chain this rarely available and well presented two bedroom first floor apartment that is being offered with the option of a sitting tenant paying £775 per calendar month. Features include an entrance hall, large living room, kitchen, two double bedrooms and the main bathroom. There are communal gardens to the rear as well as a generous amount of parking. This block has recently been subject to refurbishment works that include new communal flooring, decor and upvc double glazing. Early viewings are highly advised. Energy rating C. Service charges applicable (further details are to follow). Council Tax Band B.

Ground Rent - £101.25 per annum

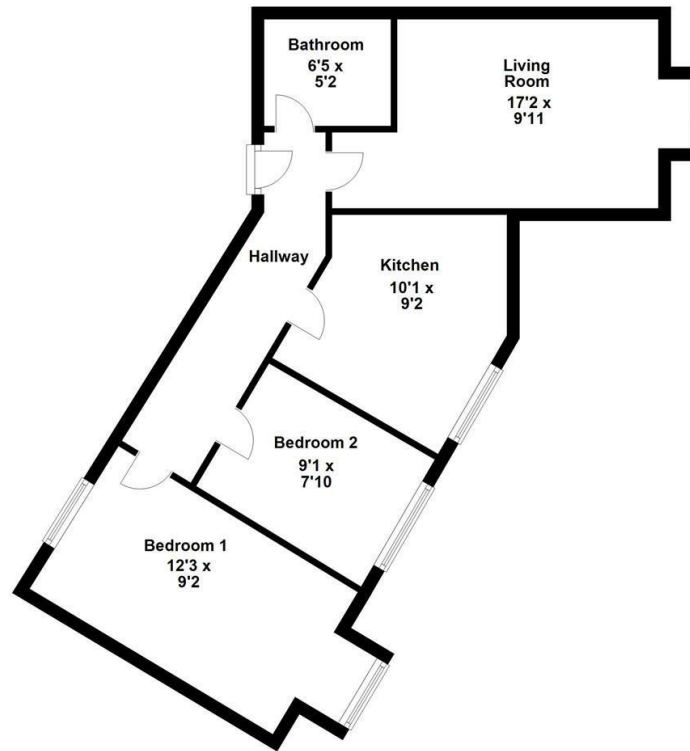
Service Charge- £1062.30 per annum



Offers In Excess Of £120,000



First Floor



Floor plan not to scale - for guidance purposes only.
 Floor plan created by Simpson West for their use.
 Plan produced using PlanUp.

Energy Efficiency Rating		
	Current	Potential
<i>Very energy efficient - lower running costs</i>		
(92 plus) A		
(81-91) B		
(69-80) C		
(55-68) D		
(39-54) E		
(21-38) F		
(1-20) G		
<i>Not energy efficient - higher running costs</i>		
England & Wales	EU Directive 2002/91/EC	

78 85

When you buy with Simpson West, you know **you'll be in safe hands**. From the moment you walk through our doors, we'll make you **feel truly welcome**. Our sales consultants and financial advisors will take you through **every step of the process**, offering **free expert advice** along the way, from help choosing the right mortgage and insurance through to finding your conveyancer. And if you need help selling your home too, **with over 20 years of local experience, you can trust us to get you moving**.



**Simpson
West**

Making Every
Journey Personal



01536 202007

info@simpsonwest.co.uk

<https://www.simpsonwest.co.uk/>

64 Corporation Street, Corby, Northants, NN17 1NH