



4 Dash Farm Close

Corby, NN17 3BL



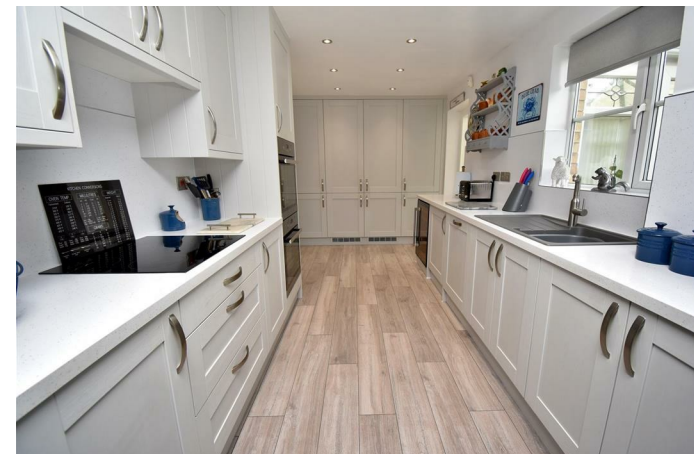
Simpson West

Perfectly situated in the heart of the sought after village of Weldon, is this rarely available detached residence which simply must be seen if it's presentation and setting are to be fully appreciated. The property occupies a corner position with a highly impressive frontage and offers accommodation to include an imposing reception hall, cloakroom/WC, a dual aspect living room with fireplace, conservatory, and a particular feature is the superb, refitted kitchen installed by Wren kitchens which includes a full range of integrated appliances. The first floor provides FOUR bedrooms with the master boasting fitted wardrobes and en-suite facilities, there is also a family bathroom. Outside, is a highly attractive lawned frontage providing OFF ROAD PARKING leading to the DOUBLE GARAGE. The rear gardens are highly private, predominately laid to lawn and are well established to all sides. We strongly recommend an early visit to this wonderful family home if genuine disappointment is to be avoided.

Energy Rating D. Council Tax Band D.

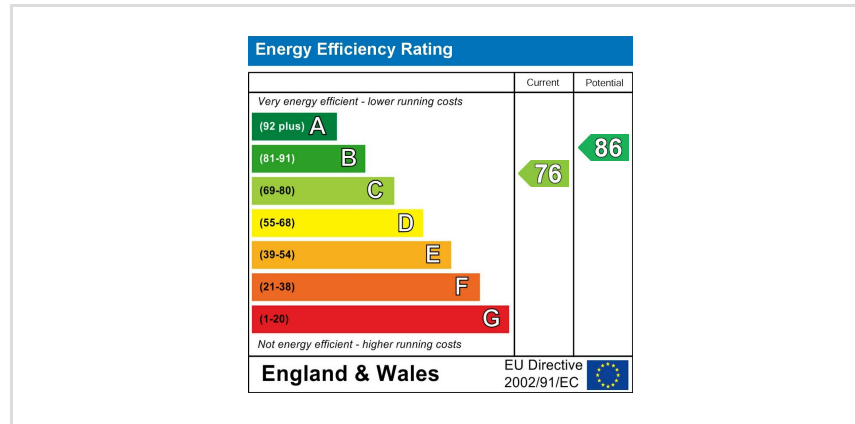
£425,000

 4  2  3





Floor plan not to scale - for guidance purposes only.
 Floor plan created by Simpson West for their use.
 Plan produced using PlanUp.



When you buy with Simpson West, you know **you'll be in safe hands**. From the moment you walk through our doors, we'll make you **feel truly welcome**. Our sales consultants and financial advisors will take you through **every step of the process**, offering **free expert advice** along the way, from help choosing the right mortgage and insurance through to finding your conveyancer. And if you need help selling your home too, **with over 20 years of local experience, you can trust us to get you moving**.



**Simpson
West**

Making Every
Journey Personal



01536 202007

info@simpsonwest.co.uk

<https://www.simpsonwest.co.uk/>

64 Corporation Street, Corby, Northants, NN17 1NH