



4 Little Meadow
Corby, NN18 8JP



Simpson West

Simpson West are delighted to offer to the market for sale with no onward chain this rarely available three bedroom detached residence located within the highly sought after Great Oakley. The property itself occupies a pleasant position being within walking distance to the local school, shops and other amenities. Features include an entrance hall, living room and modern kitchen dining room with doors leading to the rear garden. To the first floor there are two double bedrooms, a single bedroom and the main family bathroom. To the rear is a large garden facing south that is fully enclosed with both lawn and a patio area. To the front is off road parking leading to a single garage. Early viewings are highly encouraged. Energy rating D. Council Tax Band C.

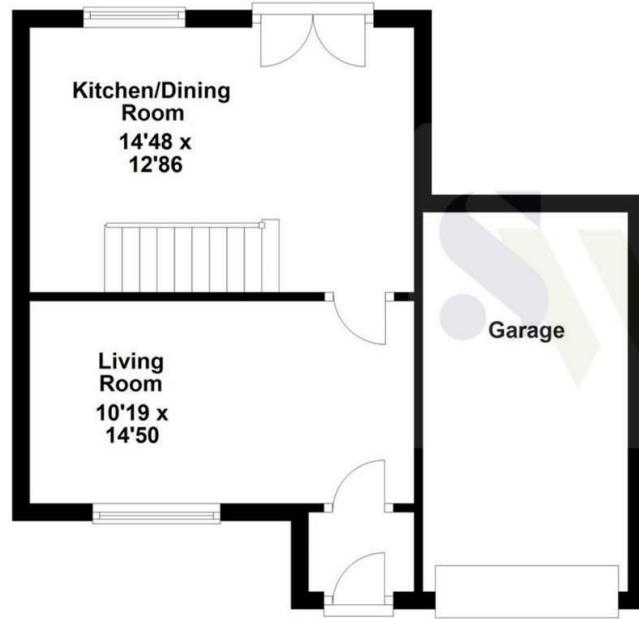


£254,000

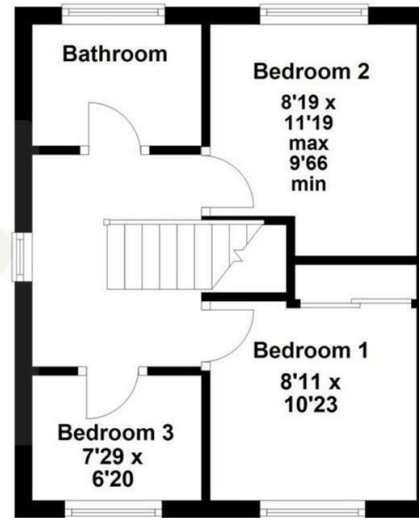
 3  1  1



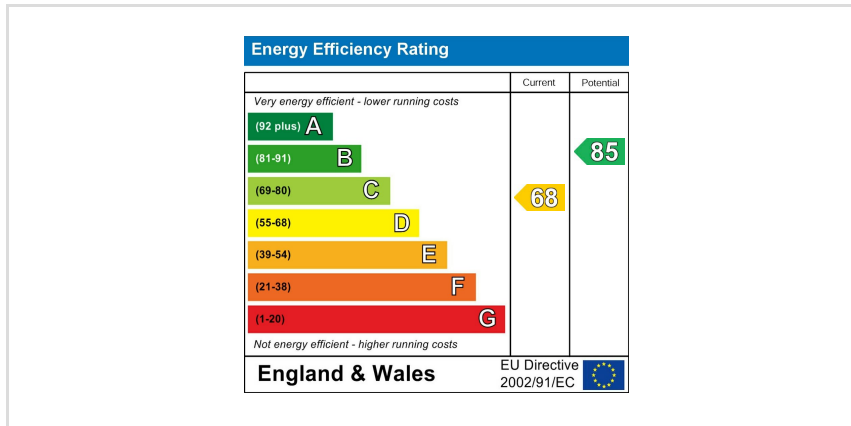
Ground Floor



First Floor



Floor plan not to scale - for guidance purposes only.
Plan produced using PlanUp.



When you buy with Simpson West, you know **you'll be in safe hands**. From the moment you walk through our doors, we'll make you **feel truly welcome**. Our sales consultants and financial advisors will take you through **every step of the process**, offering **free expert advice** along the way, from help choosing the right mortgage and insurance through to finding your conveyancer. And if you need help selling your home too, **with over 20 years of local experience, you can trust us to get you moving**.



**Simpson
West**

Making Every
Journey Personal



01536 202007

info@simpsonwest.co.uk

<https://www.simpsonwest.co.uk/>

64 Corporation Street, Corby, Northants, NN17 1NH