



10 Glover Court

Market Harborough, Leicestershire LE16 8TQ



**Simpson West**

Enjoying an attractive cul-de-sac position within the picturesque village of Middleton is this beautifully presented link-detached property which offers features and accommodation to include a reception hall, cloakroom/WC, living room, and a superbly fitted kitchen/dining room which includes integrated appliances and has been thoughtfully extended to include a sitting area which overlooks the garden. The first floor provides THREE DOUBLE BEDROOMS with fitted wardrobes and en-suite facilities to the master, there is also a refitted family bathroom. Outside, there is an attractive open plan frontage with a driveway providing off road parking facilities to one side set beneath a CAR PORT and leading to the GARAGE. The rear gardens have been landscaped to provide an easy maintenance and highly private setting. Only by visiting this rarely available family home will its position, condition and setting be truly appreciated.

Energy Rating D. Council Tax Band C.

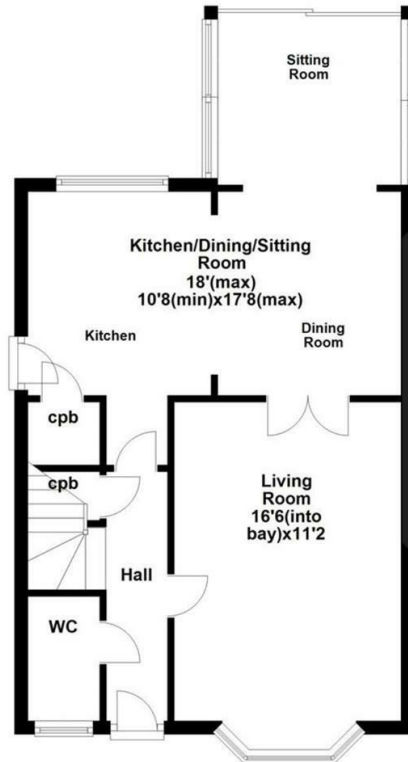


£385,000

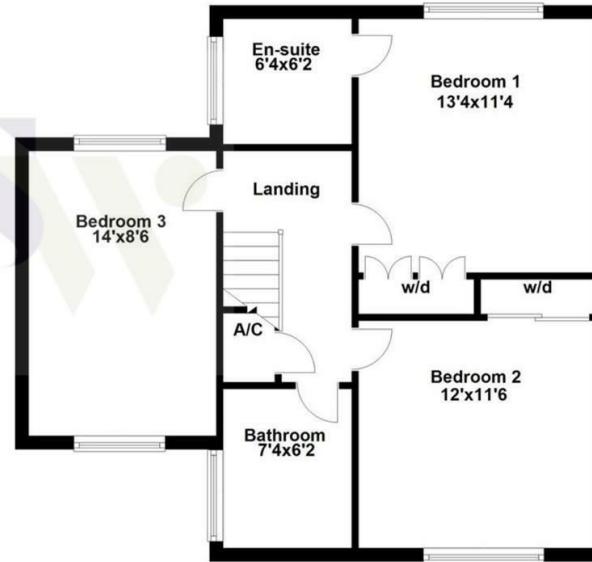
3 2 2



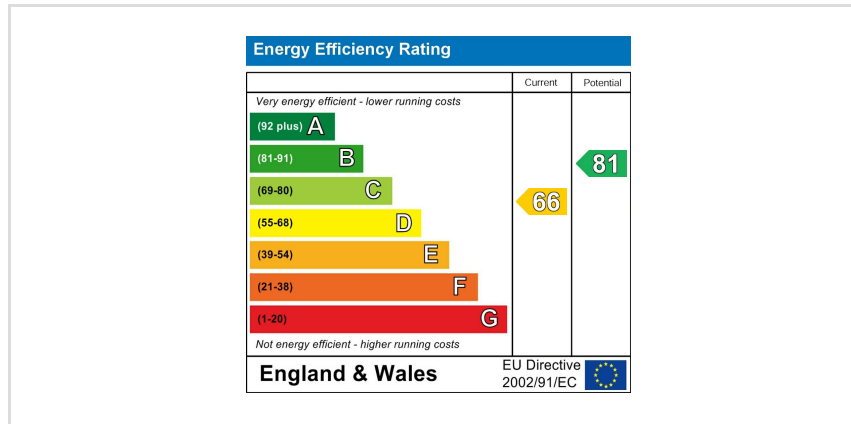
### Ground Floor



### First Floor



Floor plan not to scale - for guidance purposes only.  
Plan produced using PlanUp.



When you buy with Simpson West, you know **you'll be in safe hands**. From the moment you walk through our doors, we'll make you **feel truly welcome**. Our sales consultants and financial advisors will take you through **every step of the process**, offering **free expert advice** along the way, from help choosing the right mortgage and insurance through to finding your conveyancer. And if you need help selling your home too, **with over 20 years of local experience, you can trust us to get you moving**.



**Simpson  
West**

Making Every  
Journey Personal



01536 202007

[info@simpsonwest.co.uk](mailto:info@simpsonwest.co.uk)

<https://www.simpsonwest.co.uk/>

64 Corporation Street, Corby, Northants, NN17 1NH