



20 Arnold Drive

Corby, Northamptonshire NN17 5FY



**Simpson West**



Simpson West are delighted to offer to the market for sale this rarely available FOUR bedroom detached residence located within the highly regarded Priors Hall Park. The property itself is well positioned at the end of a quiet cul-de-sac and is within walking distance to the local school and other amenities. Features include a spacious entrance hall, large living room, study, cloakroom w/c, utility room and the main room of the house! the popular kitchen dining family room with fitted modern kitchen boasting integrated appliances throughout. To the first floor there are three large double bedrooms, with the larger boasting fitted wardrobes and an en-suite shower room, in addition there is a fourth single bedroom and the main family bathroom with four piece suite. To the rear of the property is unusually large garden that is fully enclosed by timber fencing. To the front there is off road parking for numerous vehicles and the single detached garage. Early viewings are highly advised. Energy rating B. Council Tax Band E.

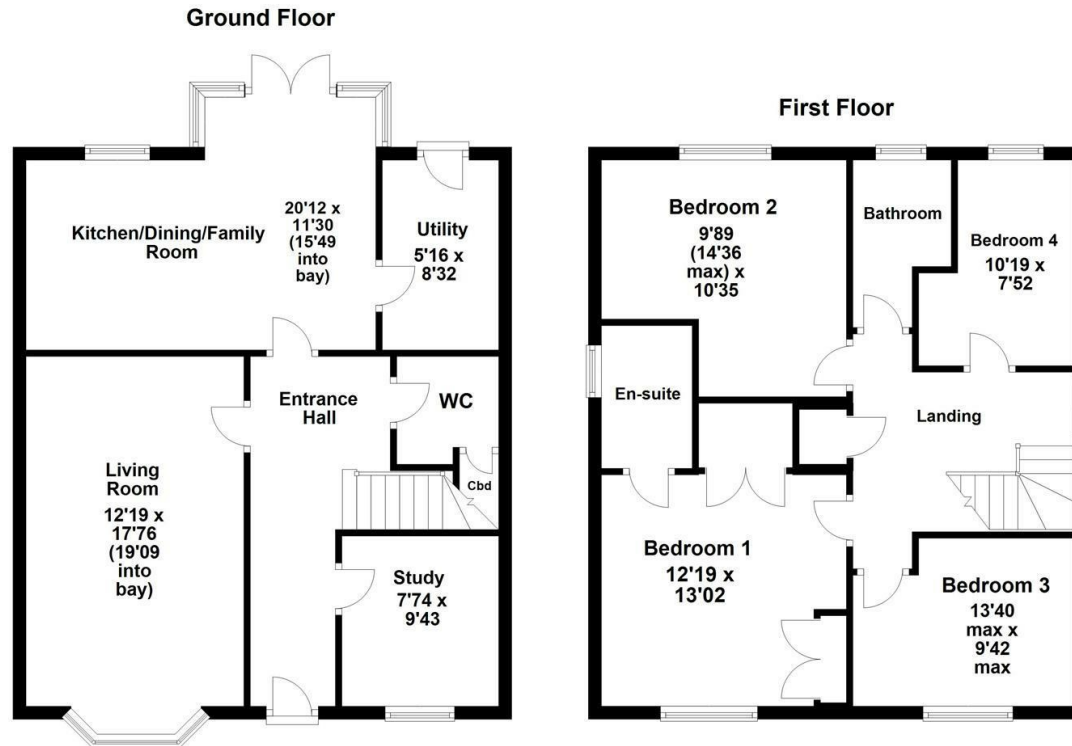
\*Urban and Civic Estate Charge Applicable\* Approx £278pa.



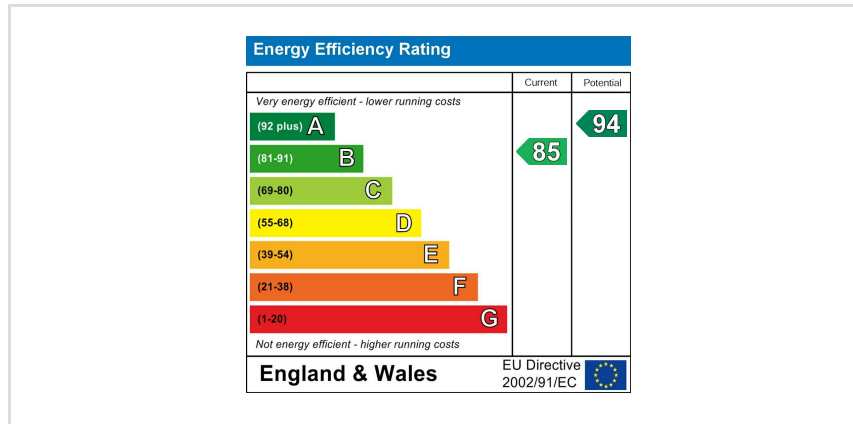
£390,000

4 2 3





Floor plan not to scale - for guidance purposes only.  
Plan produced using PlanUp.





When you buy with Simpson West, you know **you'll be in safe hands**. From the moment you walk through our doors, we'll make you **feel truly welcome**. Our sales consultants and financial advisors will take you through **every step of the process**, offering **free expert advice** along the way, from help choosing the right mortgage and insurance through to finding your conveyancer. And if you need help selling your home too, **with over 20 years of local experience, you can trust us to get you moving**.



**Simpson  
West**

Making Every  
Journey Personal



01536 202007

[info@simpsonwest.co.uk](mailto:info@simpsonwest.co.uk)

<https://www.simpsonwest.co.uk/>

64 Corporation Street, Corby, Northants, NN17 1NH