



357 Lyveden Way

Corby, Northamptonshire NN18 8PH



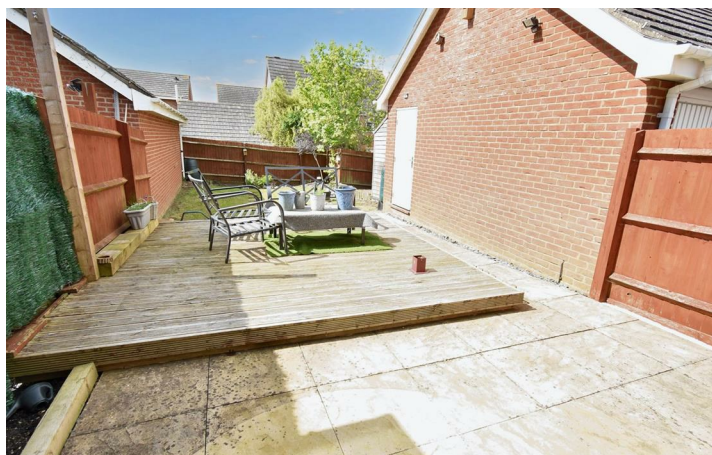
Simpson West

Being situated within the popular Oakley Vale area is this rarely available end property which is being offered for sale with NO CHAIN and offers features to include double glazing, gas radiator central heating, entrance porch, cloakroom/WC, living room, and kitchen/dining room with integrated appliances. To the first floor there are two bedrooms and a refitted bathroom. Outside there are larger than average lawned gardens with paved and decked patio areas and a driveway which provides off road parking for three vehicles leading to a garage. Energy Rating C. Council Tax Band B.

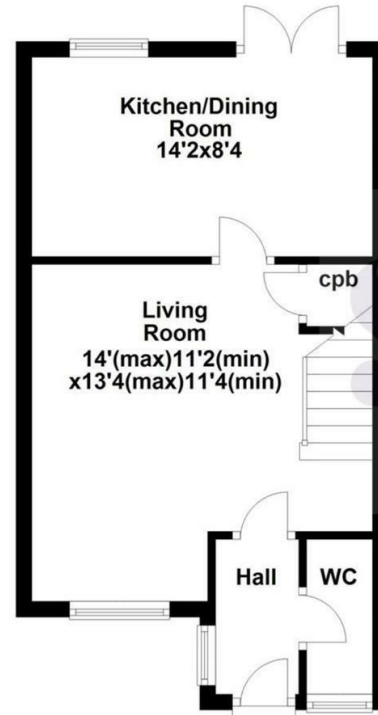


£209,950

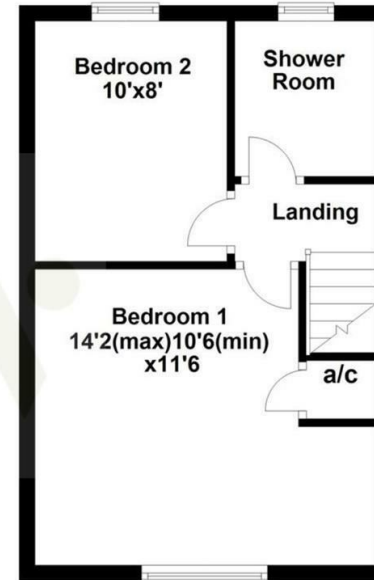
2 1 1



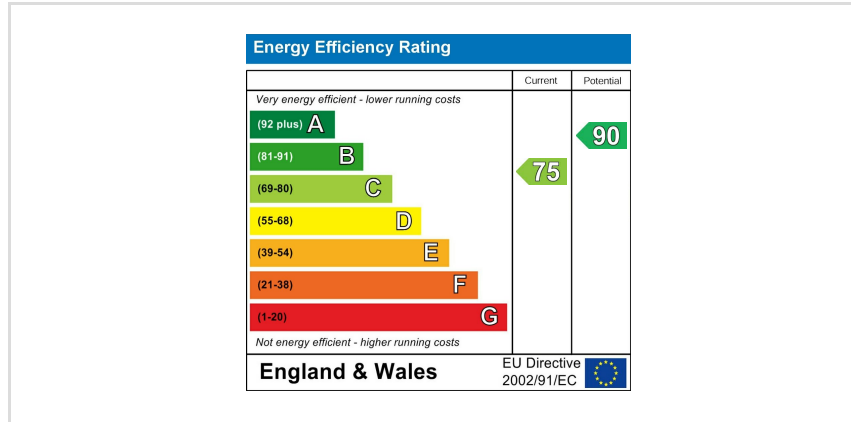
Ground Floor



First Floor



Floor plan not to scale - for guidance purposes only.
Plan produced using PlanUp.



When you buy with Simpson West, you know **you'll be in safe hands**. From the moment you walk through our doors, we'll make you **feel truly welcome**. Our sales consultants and financial advisors will take you through **every step of the process**, offering **free expert advice** along the way, from help choosing the right mortgage and insurance through to finding your conveyancer. And if you need help selling your home too, **with over 20 years of local experience, you can trust us to get you moving**.



**Simpson
West**

Making Every
Journey Personal



01536 202007

info@simpsonwest.co.uk

<https://www.simpsonwest.co.uk/>

64 Corporation Street, Corby, Northants, NN17 1NH