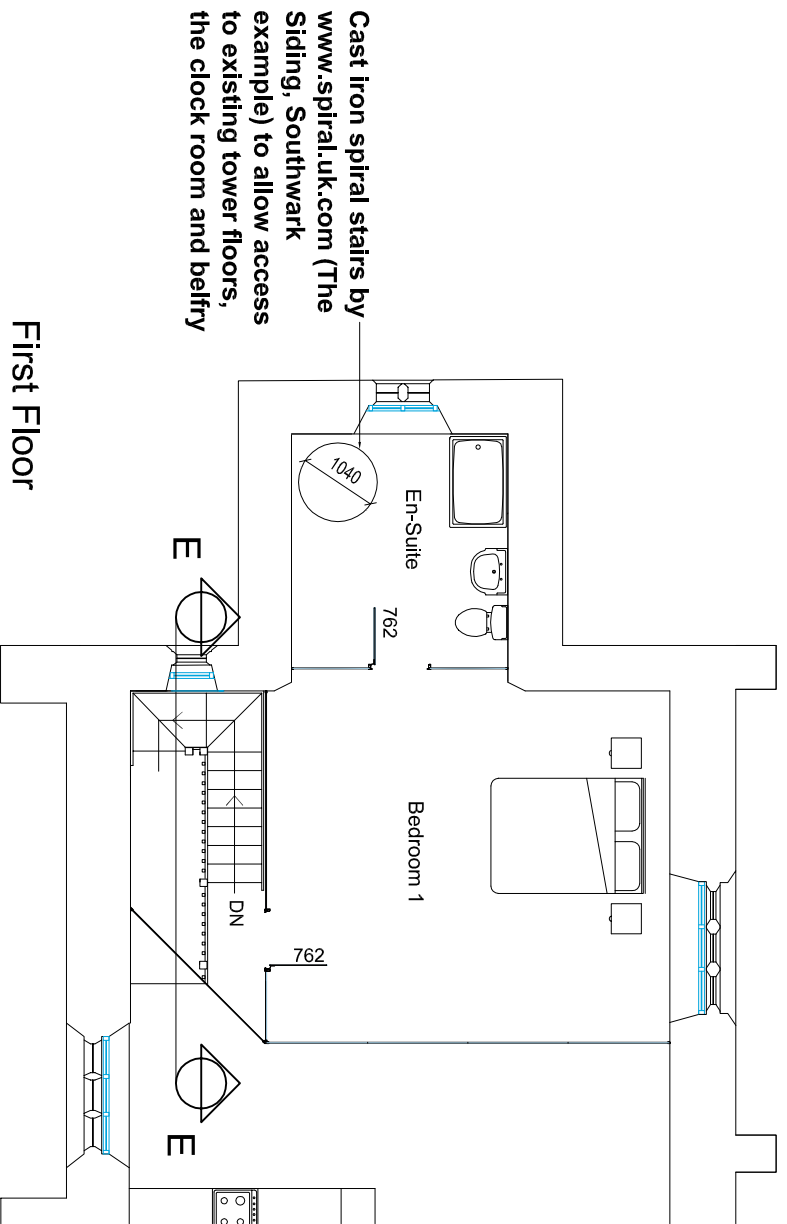
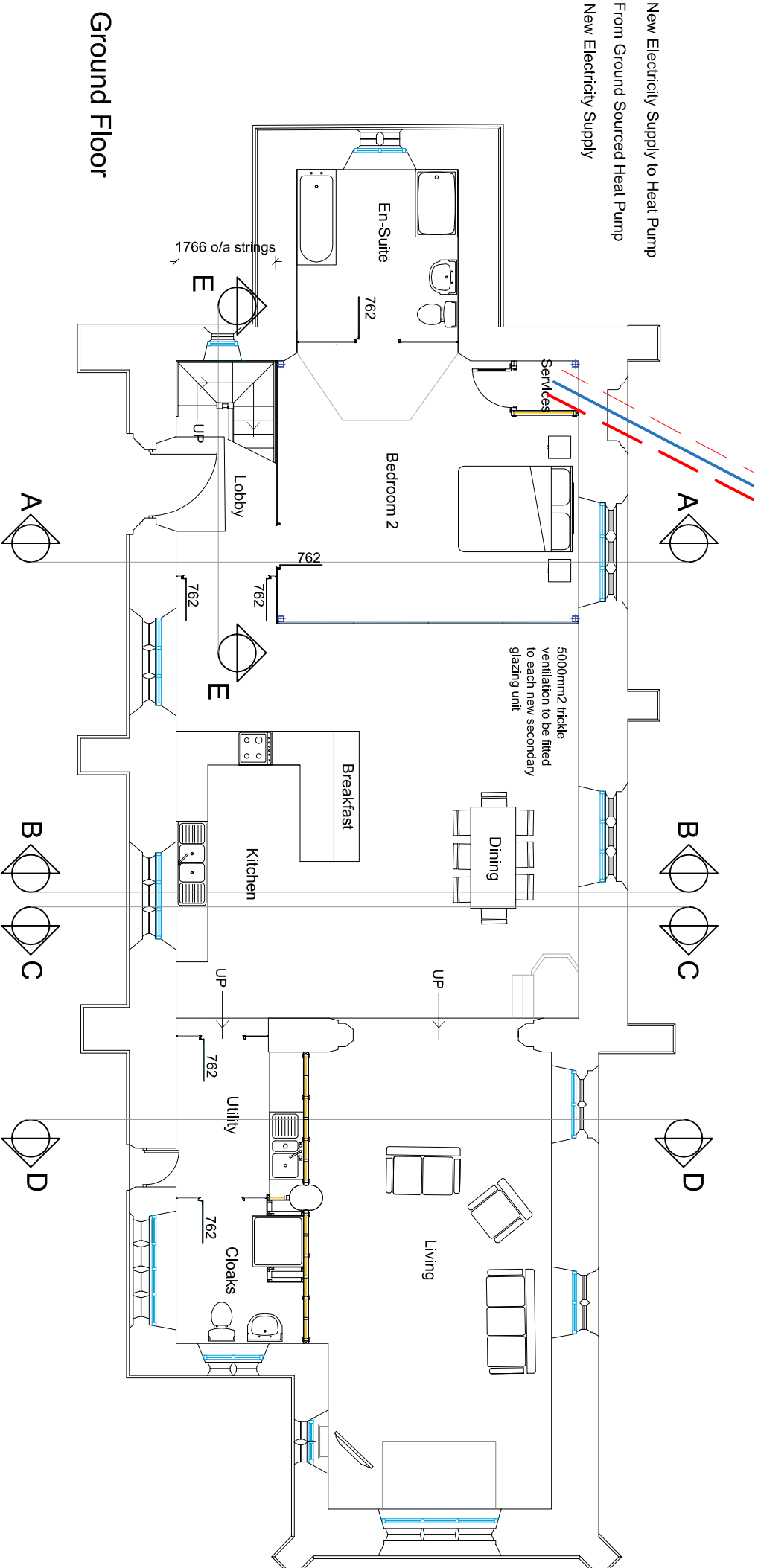


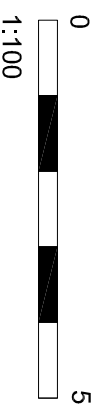
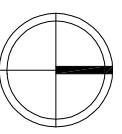
DO NOT SCALE FROM THIS DRAWING. ALL DIMENSIONS TO BE CHECKED ON SITE. ANY ERRORS OR DISCREPANCIES TO BE REPORTED TO THE ARCHITECT IMMEDIATELY.
 SITE INFORMATION SUPPLIED BY THIRD PARTIES CANNOT BE GUARANTEED FOR ACCURACY. ALL FEATURES AND DIMENSIONS ARE SUBJECT TO CONTRIBUTION BY LEGAL, SERVICE AND UTILITY DOCUMENTATION AND DETAILED TOPOGRAPHICAL SURVEY.
 COPYRIGHT RETAINED BY (HMA NORTH EAST LTD)

- New Electricity Supply to Heat Pump
- From Ground Sourced Heat Pump
- New Electricity Supply



Cast iron spiral stairs by www.spiral.uk.com (The Siding, Southwark example) to allow access to existing tower floors, the clock room and belfry

First Floor



Hugh Massey Architects, Planning & Landscape Consultants

REVISIONS
 A: 190324.ND SF removed, FF spiral stair ref amended

PROJECT: Conversion of St. Leonard's Church,
 Ragnall, NG22 0UR

HMA (NORTH EAST) LTD: Mill House, Chester-le-Street, DH3 3RA,
 Tel: +44(0)1207 280095,
 e: centraladm@hughmasseyarchitects.co.uk

DRAWING: Proposed Floor Plans, Scheme E
 CLIENT: Trevor Swales

SCALE: 1:100 PAPER: @A3 DRAWN: DO

JOB NO: 1690 DRAWING NO: 100_22

REVISION: A ORIGINATION DATE: 05-07-2023

DRAWING STATUS: Planning CHECKED: HM