



The Mews, 22a Coventry Road, Leicester, LE19 2GR

£995

A FANTASTIC OPPORTUNITY TO RENT A DETACHED, TWO STOREY OFFICE SPACE IN THE HEART OF NARBOROUGH VILLAGE - The property, which has been recently updated has excellent road frontage, and space briefly comprising: Entrance, Open office area, separate kitchen and WC. To the first floor is a further larger open area.

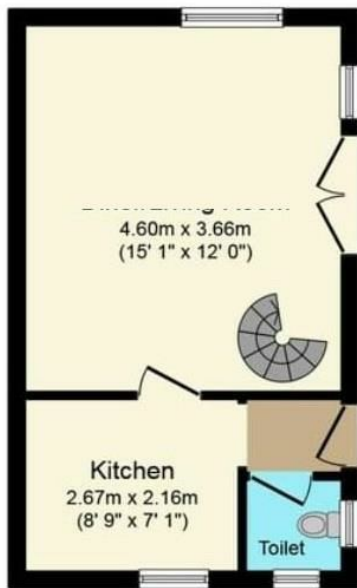
Fees

Tenants will be responsible for the lease charge of £300 plus vat.

Opening Hours

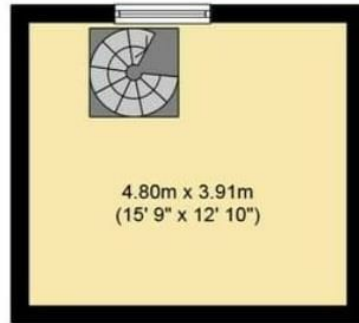
MONDAY - FRIDAY : 9:00am - 17:30pm SATURDAY : 10:00am - 14:00pm





Ground Floor

Floor area 27.0 sq. m. (291 sq. ft.) approx



First Floor

Floor area 14.0 sq. m. (151 sq. ft.) approx



Energy Efficiency Rating		Current	Potential
Very energy efficient - lower running costs			
(92 plus) A			
(81-91) B			
(69-80) C			
(55-68) D			
(39-54) E			
(21-38) F			
(1-20) G			
Not energy efficient - higher running costs			
England & Wales		EU Directive 2002/91/EC	

Environmental Impact (CO ₂) Rating		Current	Potential
Very environmentally friendly - lower CO ₂ emissions			
(92 plus) A			
(81-91) B			
(69-80) C			
(55-68) D			
(39-54) E			
(21-38) F			
(1-20) G			
Not environmentally friendly - higher CO ₂ emissions			
England & Wales		EU Directive 2002/91/EC	