



## The Granary Main Street, Lutterworth, LE17 5JG

**£849,950**

The Granary is situated in the highly sought after south Leicestershire village of Dunton Bassett, surrounded by open countryside, and offers highly versatile accommodation. Approached by a mature tree-lined driveway shared with only four other properties, this executive family home offers beautifully appointed accommodation briefly comprising: Entrance hallway, Sitting room, Breakfast kitchen, Family room, Garden room, Dining room, Study and Two w/cs. To the first floor is a galleried landing, three / four bedrooms, one with an en suite, and a further family bathroom. An additional staircase from the family room leads to another large bedroom with a dressing area and en suite. Outside: Enclosed, private and well-stocked rear garden, a large driveway and a garage.



## Approach



Via a mature tree-lined driveway, from which access is available to the neighbouring fields.

## Additional Image



## Additional Image



## Additional Image



## Entrance Hallway



With stairs off rising to the first floor, feature full height windows to the front aspect, and doors off to the majority of the ground floor accommodation. Radiator.

## Sitting Room



With dual aspect windows, double opening French doors to the rear garden, and a feature open fireplace. Radiator.



### Additional Image



### Breakfast Kitchen



With a window to the rear aspect, the kitchen is fitted with a comprehensive range of eye level and base level storage units with worksurfaces over and splashbacks. There is space for a range style cooker with a fitted extractor hood over, together with an integral dishwasher, fridge and freezer. There is a door to the family room and an opening to the utility. Radiator.

### Additional Image



### Utility

With two windows to the side aspect, fitted with a further matching range of storage units, space / plumbing for a washing machine and a fitted safe. Radiator.

### Dining Room



With a window to the rear aspect and a door to outside. Wall mounted air conditioning unit and a radiator.

### Study

With a window to the front aspect, radiator.

### Ground Floor W/C

Fitted with a low level w/c, inset wash basin with storage under, radiator.

### Family Room



With doors off to the garden room and additional w/c, along with a staircase to the first floor.



### Additional Image



### Additional W/C

Fitted with a low level w/c and wash basin.

### Garden Room



An excellent recent addition to the property which provides a further versatile living space. With bi-folding doors to outside and a wall mounted air conditioning unit.

### Additional Image



### First Floor Galleried Landing



With a large window to the front aspect and doors off to all accommodation. Radiator.

### Bedroom



With windows to the rear aspect, there is a good range of fitted wardrobes and a dressing table. There is a further dressing area which is fitted with a matching range of wardrobes and a door to the en suite.

### Additional Image





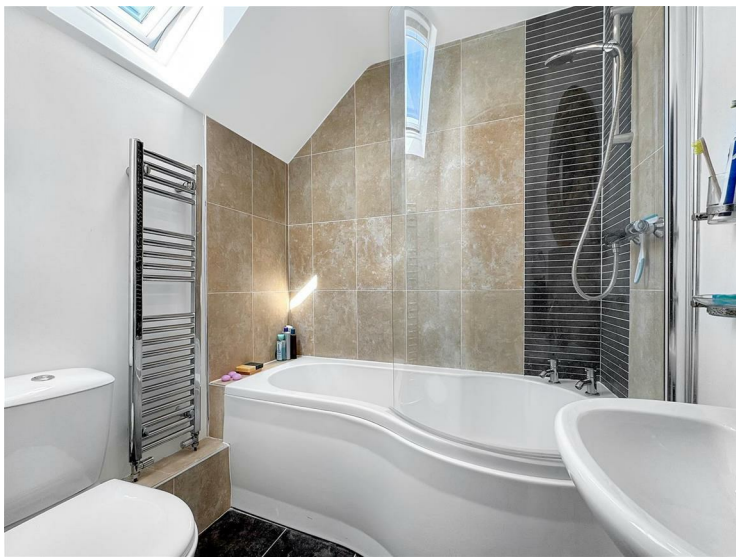
Additional Image



Additional Image



En Suite



With a window to the front aspect, fitted with a low level w/c, wash basin and a 'P' shaped bath with a shower over and a glass screen. Heated towel rail / radiator.

Bedroom



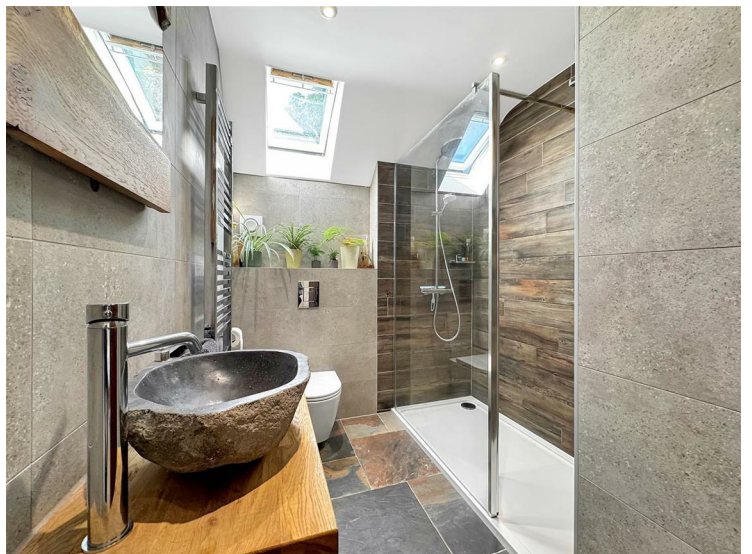
With a window to the rear aspect, radiator.

Bedroom



Formerly two bedrooms, this large bedroom has dual aspect windows and two radiators.

Family Bathroom



With a window to the rear aspect, the refitted bathroom has a low level w/c, countertop mounted wash basin with storage under and a large walk-in shower enclosure with a rainfall showerhead. Heated towel rail / radiator.



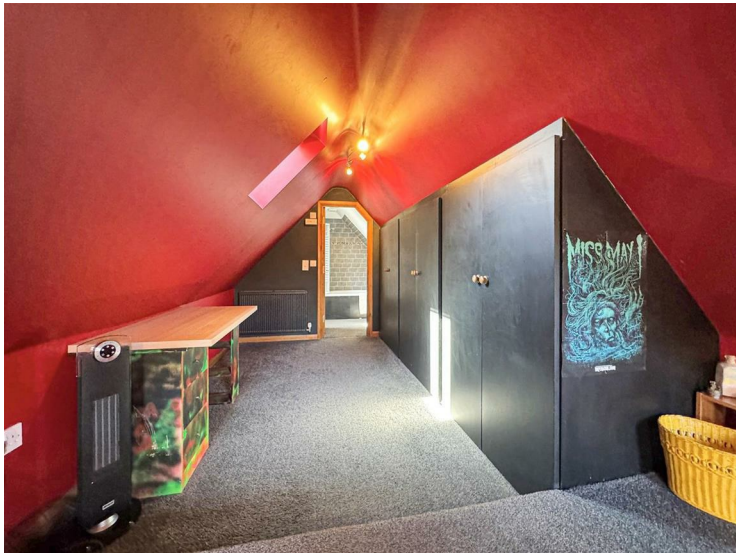
## Bedroom



Accessed via a staircase from the family room, this large space in our view would make for an excellent annexe and / or an additional bedroom.

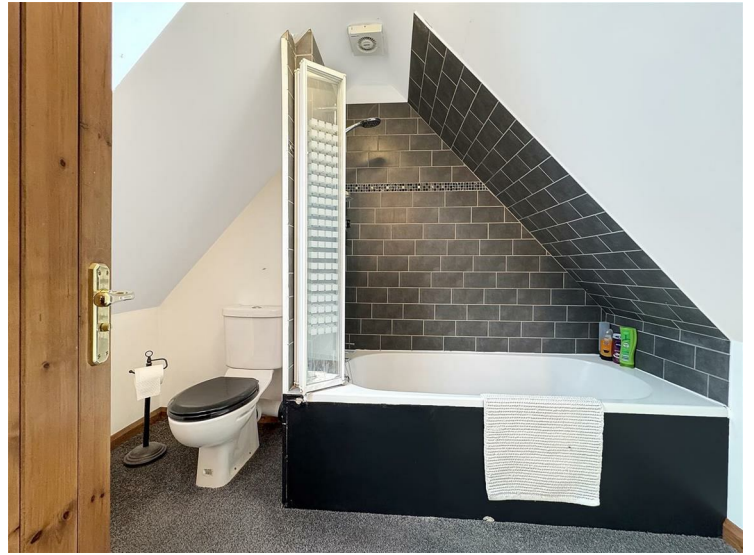
There are three windows, fitted wardrobes, eaves storage, ample space for bedroom / living furniture and two radiators.

### Additional Image



## Dressing Area

## En Suite



With a window to the side aspect, fitted with a low level w/c, wash basin and a bath with a shower over and glass screen. Radiator.

## Outside



The well stocked and private rear garden has year round interest, being laid largely to lawn with mature and well tended borders and various seating areas.

To the front of the property is a large driveway and a garage.

### Additional Image





Additional Image



Additional Image



Additional Image



### Offer Procedure

If you are obtaining a mortgage on this property, one of our qualified mortgage consultants will contact you to qualify the offer on behalf of our vendors.

In order to satisfy money laundering regulations Carlton Estates are required to carry out checks to verify each parties identity.

### Mortgages

Independent Mortgage advice is available through this office. If you wish to speak to our Independent Financial Adviser, please call our office to arrange an appointment.

### Thinking of Selling?

IF YOU ARE THINKING OF SELLING YOUR PROPERTY LET OUR LOCAL KNOWLEDGE AND EXPERIENCE WORK FOR YOU!

Carlton Estates are an independent and family run estate agency specialising in the local market, having a reputation for quality, service and customer care.

We value your business and understand that selling your home is a major decision.

Our guarantee to you is that through our professionalism and attention to detail in every respect, we will endeavor to ensure the entire process is as straight forward and hassle free as possible.

10 GOOD reasons to choose Carlton Estates:

- \* THE local agent
  - \* FREE market appraisal
  - \* REALISTIC valuations based on local market knowledge
  - \* EXTENSIVE advertising for maximum exposure
  - \* COMPETITIVE fees
  - \* REGULAR client feedback
  - \* MORTGAGE advice available
  - \* NO sale no fee
  - \* ACCOMPANIED viewing's where necessary
  - \* INTERNET advertising to include, Rightmove, ONTHEMARKET, FindaProperty and our own [www.carltonestates.co.uk](http://www.carltonestates.co.uk)
- CALL US NOW ON 0116 284 9636

### Offer Procedure

If you are obtaining a mortgage on this property, one of our qualified mortgage consultants will contact you to qualify the offer on behalf of our vendors.

In order to satisfy money laundering regulations Carlton Estates are required to carry out checks to verify each parties identity.

### Opening Hours

MONDAY - FRIDAY : 9:00am - 17:30pm SATURDAY : 10:00am - 14:00pm





