



Field View, (To the rear of 51) Dunton Road, Leicester, LE9 6NA

£695,000

Field View is an EXCITING OPPORTUNITY to purchase a BRAND NEW executive family home which, once completed, will be finished TO A HIGH SPECIFICATION! An early reservation will allow buyers the option of choosing various finishes.

Sitting on a COMMANDING PLOT, overlooking OPEN COUNTRYSIDE, the highly SPACIOUS accommodation will briefly comprise: Entrance hallway, ENVIABLE Living / dining kitchen, Utility, W/c, Study, Four GOOD SIZED bedrooms, TWO EN SUITES and a Family bathroom. Outside: Landscaped rear garden, Driveway parking and a DOUBLE GARAGE.

Rear Elevation CGI



Kitchen CGI

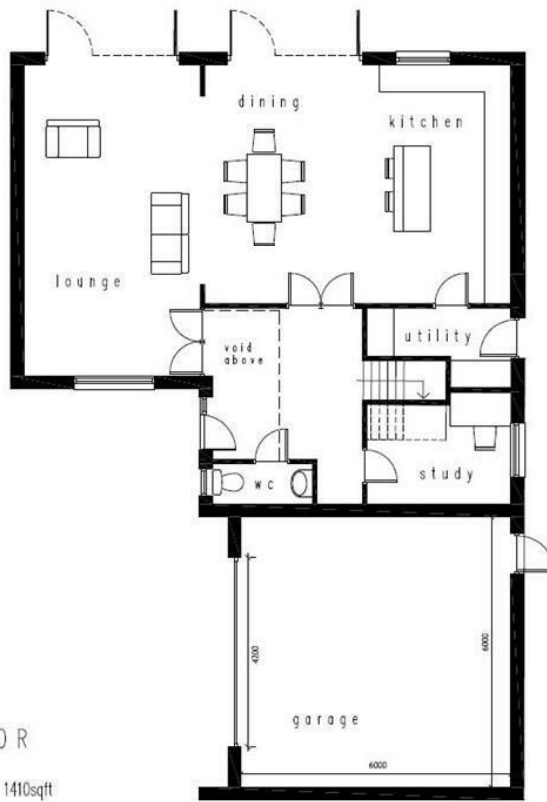


Kitchen CGI



Kitchen CGI





GROUND FLOOR
GIA - 94sqm - 1011sqft
Area inc garage - 131sqm - 1410sqft



Energy Efficiency Rating		Current	Potential
Very energy efficient - lower running costs			
(92 plus) A			
(81-91) B			
(69-80) C			
(55-68) D			
(39-54) E			
(21-38) F			
(1-20) G			
Not energy efficient - higher running costs			
England & Wales		EU Directive 2002/91/EC	

Environmental Impact (CO ₂) Rating		Current	Potential
Very environmentally friendly - lower CO ₂ emissions			
(92 plus) A			
(81-91) B			
(69-80) C			
(55-68) D			
(39-54) E			
(21-38) F			
(1-20) G			
Not environmentally friendly - higher CO ₂ emissions			
England & Wales		EU Directive 2002/91/EC	