



## 19 Gurney Crescent, Leicester, LE19 2JL

**£189,950**

NO CHAIN - Two bedroom townhouse available in the ever popular South Leicestershire village of Littlethorpe and within easy reach of Narborough Railway Station. The spacious accommodation briefly comprises: Entrance, Living room, Dining kitchen, Two bedrooms and a Bathroom. Outside: Enclosed rear garden and Driveway parking.

### Entrance

With a door to the living room and stairs off rising to the first floor.

### Living Room



With a window to the front aspect, doors to the kitchen and storage cupboard, feature fireplace, radiator.

### Additional Image



### Dining Kitchen

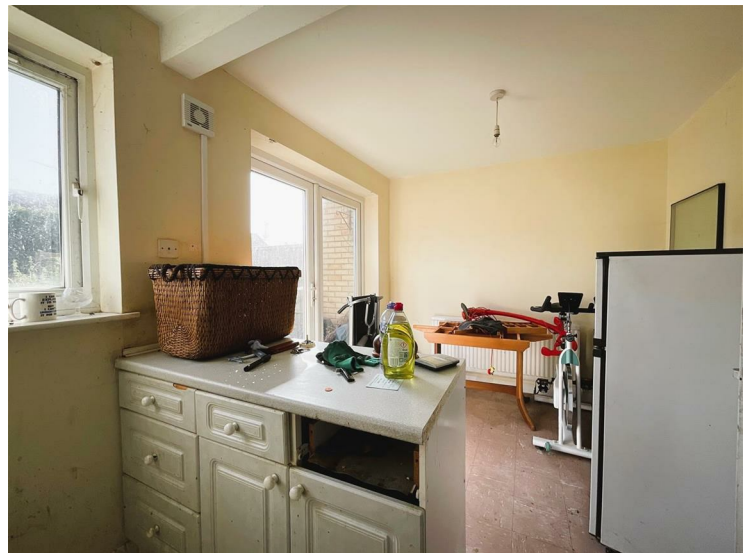


With a window to the rear aspect and a door giving outside access, the kitchen is fitted with a range of eye level and base level storage units with worksurfaces over and space / plumbing for a range of white goods. radiator.

### Additional Image



### Additional Image



**Additional Image**



**Additional Image**



**First Floor Landing**

With doors off to all first floor accommodation.

**Bedroom**



With a window to the front aspect, radiator.

**Additional Image**



**Bedroom**



With a window to the rear aspect, radiator.

**Additional Image**



## Bathroom



With a window to the rear aspect, fitted with a low level w/c, wash basin and a bath with shower over. Radiator.

## Outside



Enclosed rear garden. Gated access leads to a garage and further parking is available to the front of the property.

## Offer Procedure

If you are obtaining a mortgage on this property, one of our qualified mortgage consultants will contact you to qualify the offer on behalf of our vendors.

In order to satisfy money laundering regulations Carlton Estates are required to carry out checks to verify each parties identity.

## Mortgages

Independent Mortgage advice is available through this office. If you wish to speak to our Independent Financial Adviser, please call our office to arrange an appointment.

## Thinking of Selling?

IF YOU ARE THINKING OF SELLING YOUR PROPERTY LET OUR LOCAL KNOWLEDGE AND EXPERIENCE WORK FOR YOU!

Carlton Estates are an independent and family run estate agency specialising in the local market, having a reputation for quality, service and customer care.

We value your business and understand that selling your home is a

major decision.

Our guarantee to you is that through our professionalism and attention to detail in every respect, we will endeavor to ensure the entire process is as straight forward and hassle free as possible.

10 GOOD reasons to choose Carlton Estates:

- \* THE local agent
  - \* FREE market appraisal
  - \* REALISTIC valuations based on local market knowledge
  - \* EXTENSIVE advertising for maximum exposure
  - \* COMPETITIVE fees
  - \* REGULAR client feedback
  - \* MORTGAGE advice available
  - \* NO sale no fee
  - \* ACCOMPANIED viewing's where necessary
  - \* INTERNET advertising to include, Rightmove, ONTHEMARKET, FindaProperty and our own [www.carltonestates.co.uk](http://www.carltonestates.co.uk)
- CALL US NOW ON 0116 284 9636

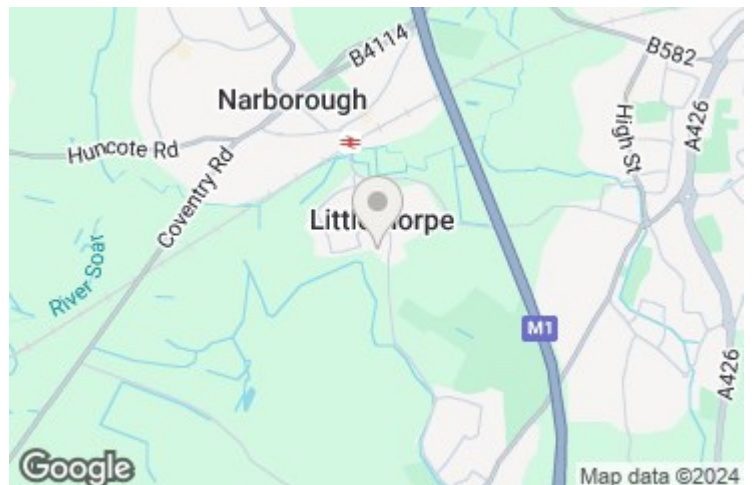
## Notes For Purchasers

While every reasonable effort is made to ensure the accuracy of descriptions and content, we should make you aware of the following guidance or limitations.

- (1) MONEY LAUNDERING REGULATIONS Intending purchasers will be asked to produce identification documentation at a later stage and we would ask for your cooperation in order that there will be no delay in agreeing the sale.
- (2) These particulars do not constitute part or all of an offer or contract.
- (3) The measurements indicated are supplied for guidance only and as such must be considered incorrect.
- (4) Potential buyers are advised to recheck the measurements before committing to any expense.
- (5) Carlton Estates (Narborough) Ltd has not tested any apparatus, equipment, fixtures, fittings, or services and it is in the buyer's interests to check the working condition of any appliances.

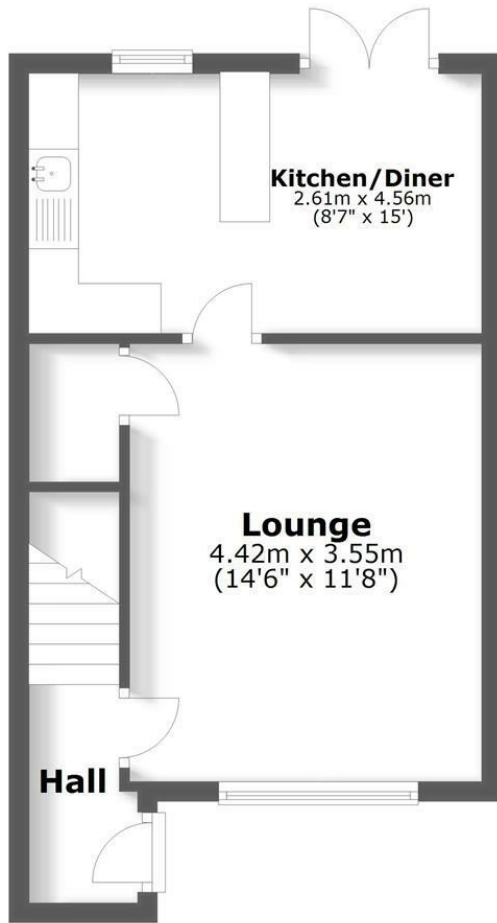
## Opening Hours

MONDAY - FRIDAY : 9:00am - 17:30pm SATURDAY : 10:00am - 14:00pm



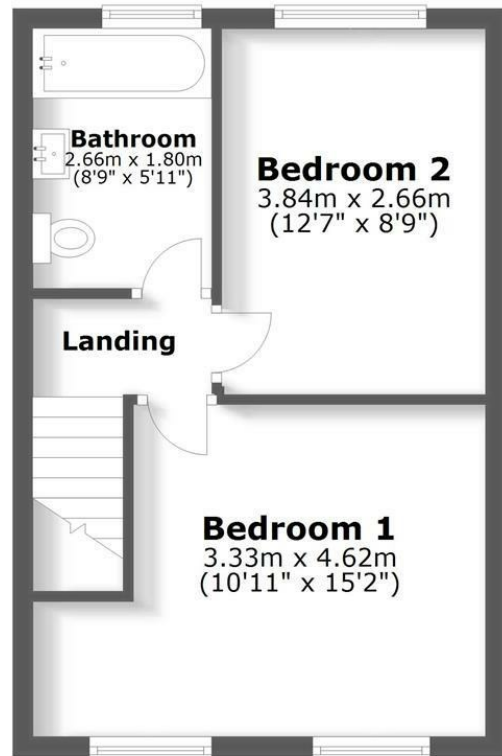
## Ground Floor

Approx. 33.8 sq. metres (364.3 sq. feet)



## First Floor

Approx. 33.2 sq. metres (357.1 sq. feet)



Total area: approx. 67.0 sq. metres (721.4 sq. feet)



Energy Efficiency Rating		Current	Potential	Environmental Impact (CO <sub>2</sub> ) Rating		Current	Potential
Vary energy efficient - lower running costs				Vary environmentally friendly - lower CO <sub>2</sub> emissions			
(92 plus) <b>A</b>				(92 plus) <b>A</b>			
(81-91) <b>B</b>				(81-91) <b>B</b>			
(69-80) <b>C</b>				(69-80) <b>C</b>			
(55-68) <b>D</b>				(55-68) <b>D</b>			
(39-54) <b>E</b>				(39-54) <b>E</b>			
(21-38) <b>F</b>				(21-38) <b>F</b>			
(1-20) <b>G</b>				(1-20) <b>G</b>			
Not energy efficient - higher running costs				Not environmentally friendly - higher CO <sub>2</sub> emissions			
<b>England &amp; Wales</b>		EU Directive 2002/91/EC		<b>England &amp; Wales</b>		EU Directive 2002/91/EC	