



Flat 16, Churchill House London Road, Mitcham, CR4 3SJ



£240,000

**Cromwells**  
ESTATE AGENTS





# Churchill House London

Mitcham, CR4 3SJ

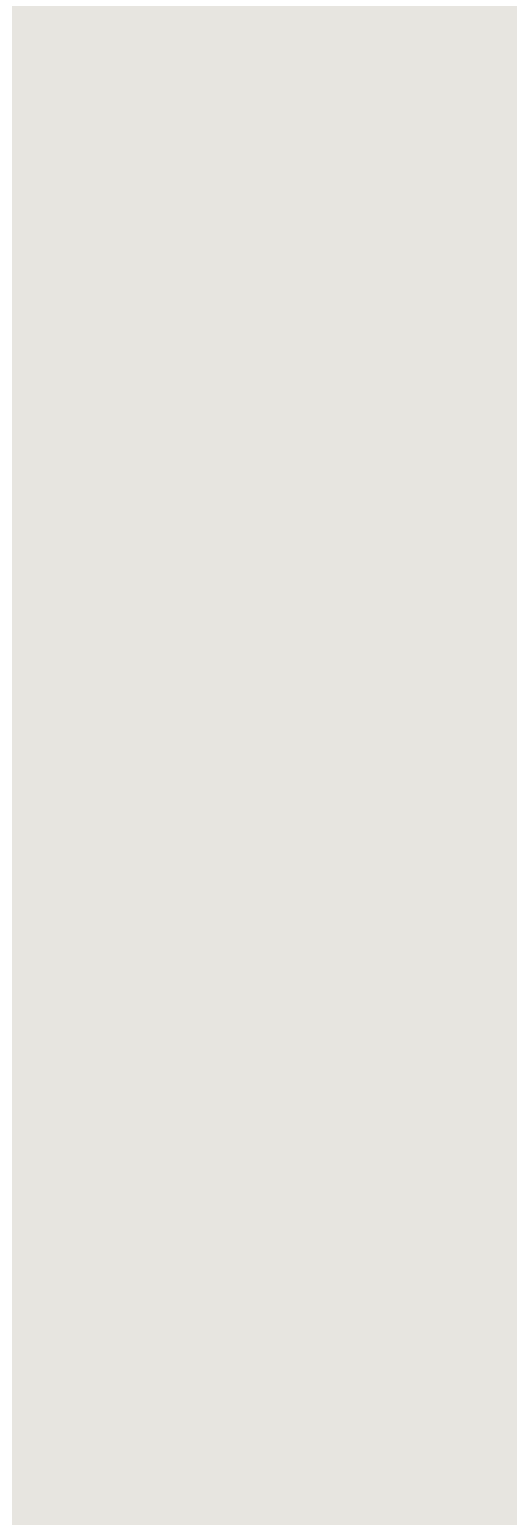
£240,000

A well presented and spacious one double bedroom second floor purpose built apartment, forming part of a popular block. Benefits include a spacious living room, fitted kitchen, modern bathroom entry-phone, passenger lift service, electric central heating, double glazing and offered with no chain. Parking space available to rent (STA).

Located for easy access Figges Marsh Park, Eastfields and Tooting Rail Stations, bus routes serving Tooting Broadway Underground (approx 15 minutes away), Three Kings Pond and Piece, Tooting and Mitcham Town Centre shopping, Cannons Leisure Centre and recreation ground, Mitcham Common featuring Seven Islands Pond and more. Council Tax Band C, EPC Rating B. Lease: 125 years from 1st December 2003

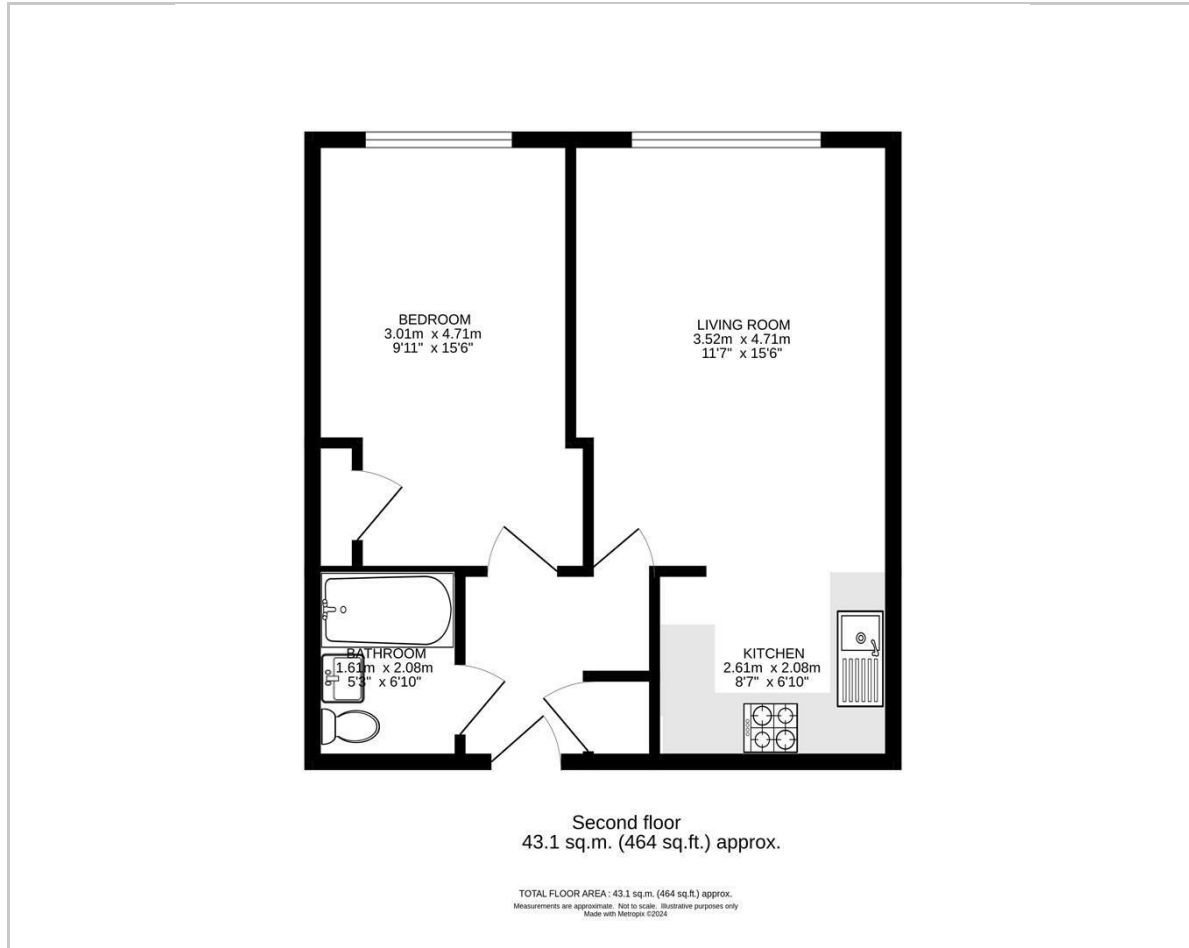








## Floor Plan



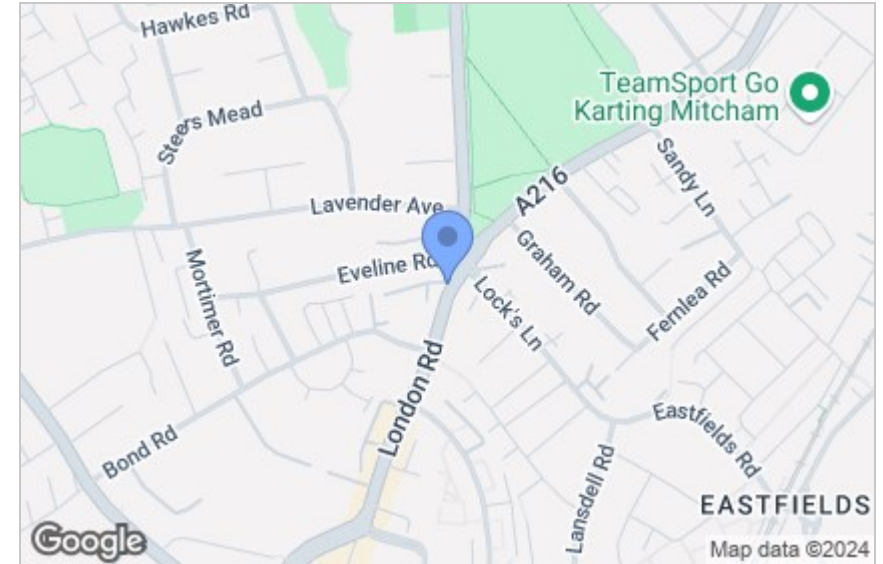
## Viewing

Please contact our Cromwells Office on 0208 647 4422

if you wish to arrange a viewing appointment for this property or require further information.

These particulars, whilst believed to be accurate are set out as a general outline only for guidance and do not constitute any part of an offer or contract. Intending purchasers should not rely on them as statements of representation of fact, but must satisfy themselves by inspection or otherwise as to their accuracy. No person in this firm's employment has the authority to make or give any representation or warranty in respect of the property.

## Area Map



## Energy Efficiency Graph

### Energy Efficiency Rating

	Current	Potential
Very energy efficient - lower running costs		
(92 plus) <b>A</b>		
(81-91) <b>B</b>		
(69-80) <b>C</b>		
(55-68) <b>D</b>		
(39-54) <b>E</b>		
(21-38) <b>F</b>		
(1-20) <b>G</b>		
Not energy efficient - higher running costs		
<b>England &amp; Wales</b>	EU Directive 2002/91/EC	