



15 Park Court Haselmere Close, Wallington, SM6 8LT



£300,000

Cromwells
ESTATE AGENTS





Cromwells Wallington are pleased to present this delightful two-bedroom first-floor maisonette with its own garden, situated in Haselmere Close, Wallington - a charming cul de sac location perfect for those seeking a cosy and convenient lifestyle.

As you step inside, you'll be greeted by a spacious reception room, perfect for entertaining guests or simply relaxing after a long day. The property boasts two double bedrooms and excellent room sizes throughout. Located close to Mellows Park, bus links, and local shops, you'll have everything you need right at your doorstep.

Accommodation

Front door into entrance lobby, stairs to 1st floor hallway .

radiator, double glazed obscure window to side aspect, vinyl floor.

Hallway

Built-in storage cupboard, varnished floorboards, loft access.

Garden

Accessed via side gate, patio area.

Living Room

Radiator, double glazed window to front aspect, varnished floorboards, electric fire with feature fireplace.

Kitchen

Range of fitted kitchen units and drawers, laminate work surface, inset stainless steel sink with chrome mixer tap, space for cooker, space for tall fridge/freezer and washing machine, tiled splashback, double glazed windows to side and rear aspect, radiator, vinyl floor.

Bedroom One

Radiator, varnished floorboards, double glazed window to rear aspect .

Bedroom Two


Built-in storage cupboard, radiator, varnished floorboards, double glazed window to front aspect.

Bathroom

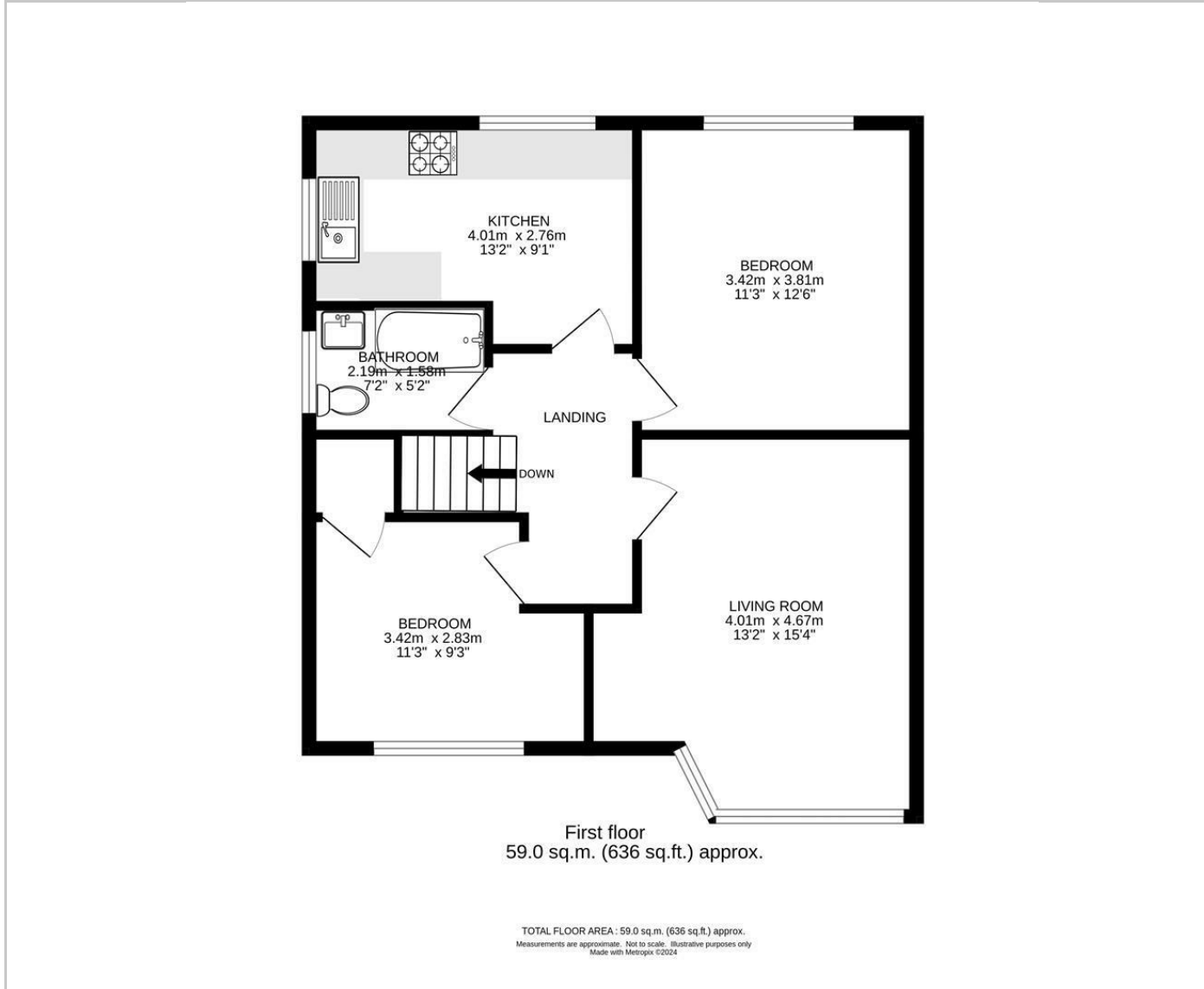
Three-piece suite comprising of bath with chrome mixer tap and shower head attachment, WC, pedestal wash hand basin with chrome mixer tap, part tiled walls,

15 Park Court Haselmere Close, Wallington, SM6 8LT



Energy Efficiency Rating		
	Current	Potential
Very energy efficient - lower running costs		
(92 plus) A		
(81-91) B		
(69-80) C	73	77
(55-68) D		
(39-54) E		
(21-38) F		
(1-20) G		
Not energy efficient - higher running costs		
England & Wales	EU Directive 2002/91/EC 	

Floor Plans



Area Map

