



22 Dornton Road
South Croydon, CR2 7DP
£280,000



22 Dornton Road

South Croydon, CR2 7DP

A fantastic opportunity to acquire this truly desirable and superbly presented 2 double bedroom split level top floor apartment, forming part of an imposing detached property and benefiting from 964 year lease and share of freehold

Features include a bright and spacious living room with a unique twin porthole feature lending light to the hallway, en-suite shower room to main bedroom, bathroom, gas central heating, double glazing, ample storage space, communal grounds and own parking space providing extra convenience.

Located for really easy access to South Croydon Rail Station, approximately 7 mins walk away, Bus Routes, Tramlink, Lloyd Park and a choice of local High Street Shops, bars and restaurants.

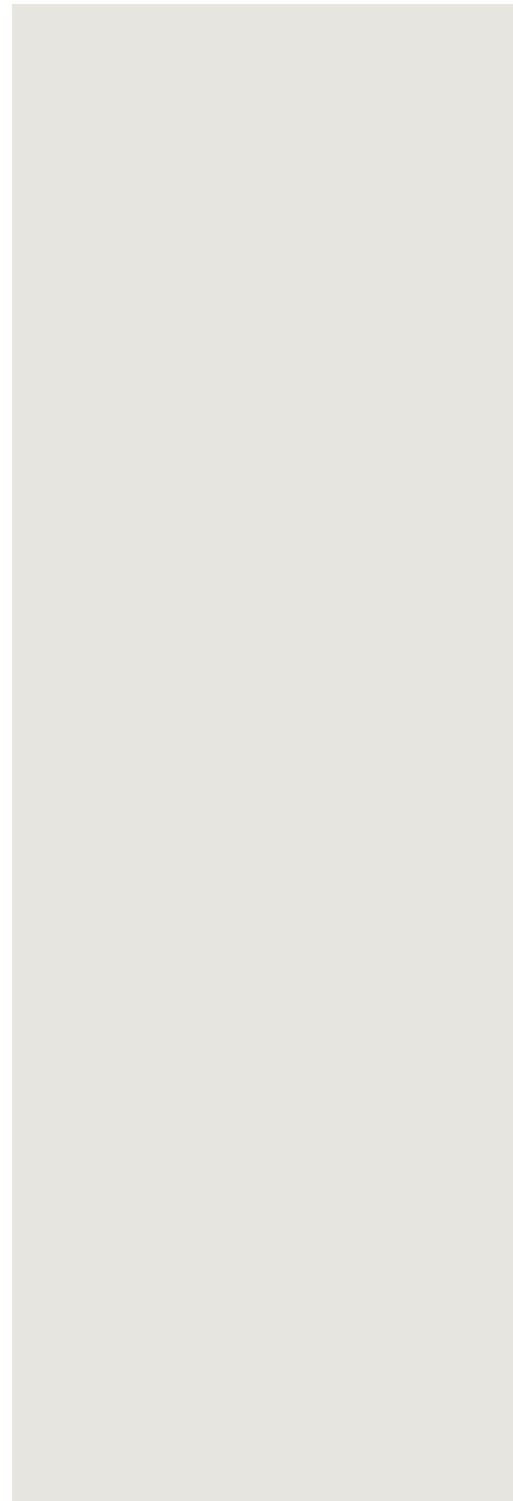
Council Tax Band C.

EPC rating C.

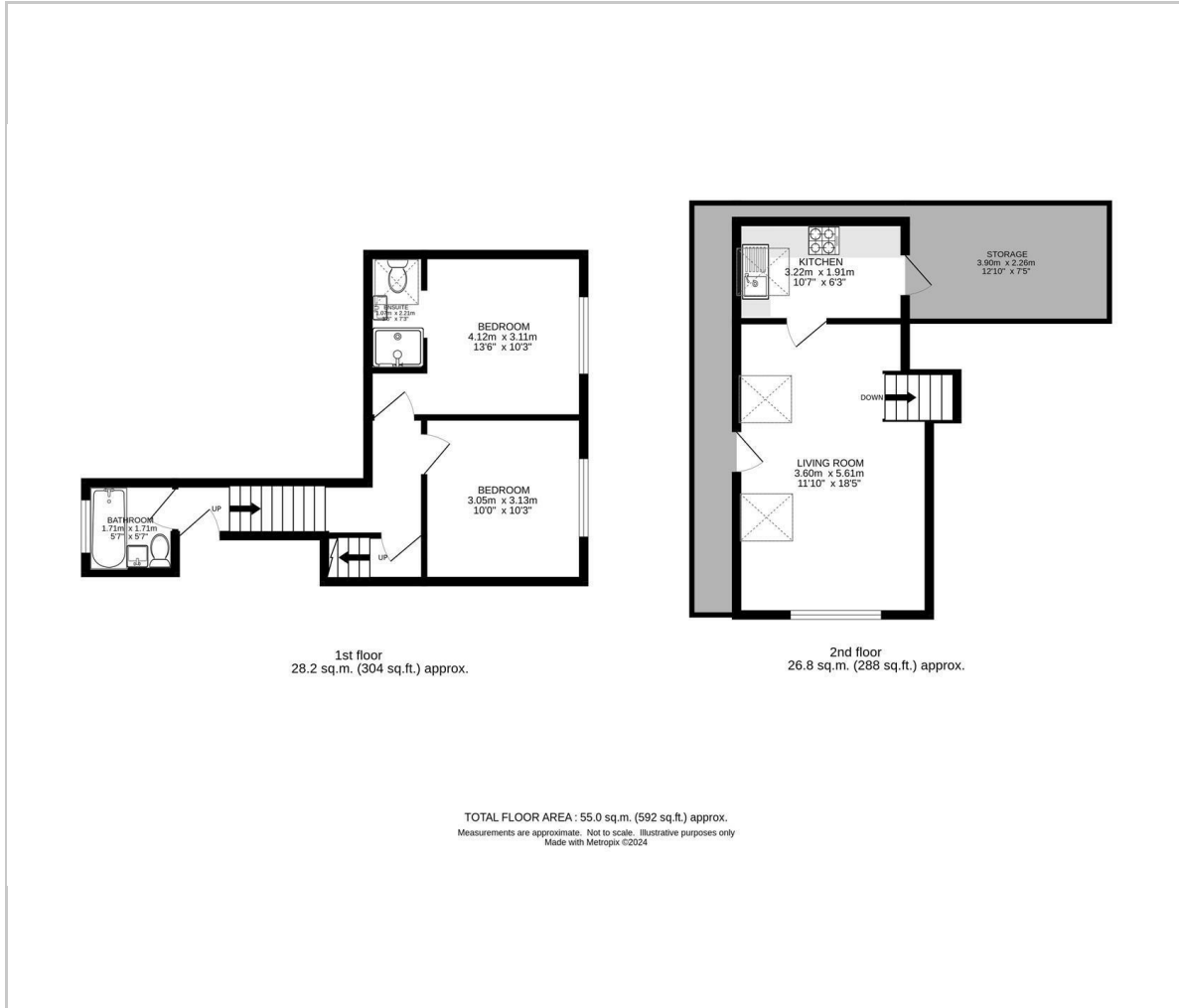
999 year lease from 1989.

Service Charge £720 per year including Buildings Insurance.





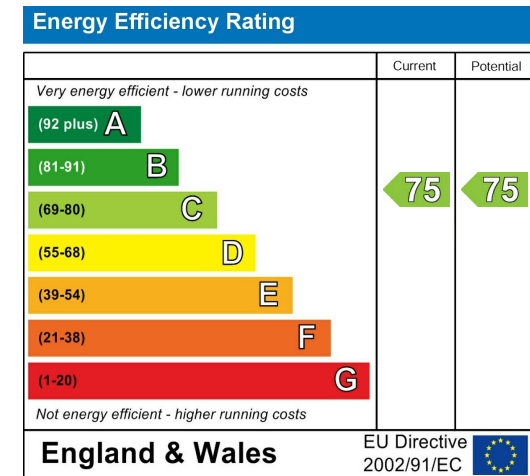
Floor Plan



Area Map



Energy Efficiency Graph



Viewing

Please contact our Cromwells Office on 0208 647 4422 if you wish to arrange a viewing appointment for this property or require further information.

These particulars, whilst believed to be accurate are set out as a general outline only for guidance and do not constitute any part of an offer or contract. Intending purchasers should not rely on them as statements of representation of fact, but must satisfy themselves by inspection or otherwise as to their accuracy. No person in this firm's employment has the authority to make or give any representation or warranty in respect of the property.