



44 Alden Court Fairfield Path

Croydon, CR0 5QN

£140,000



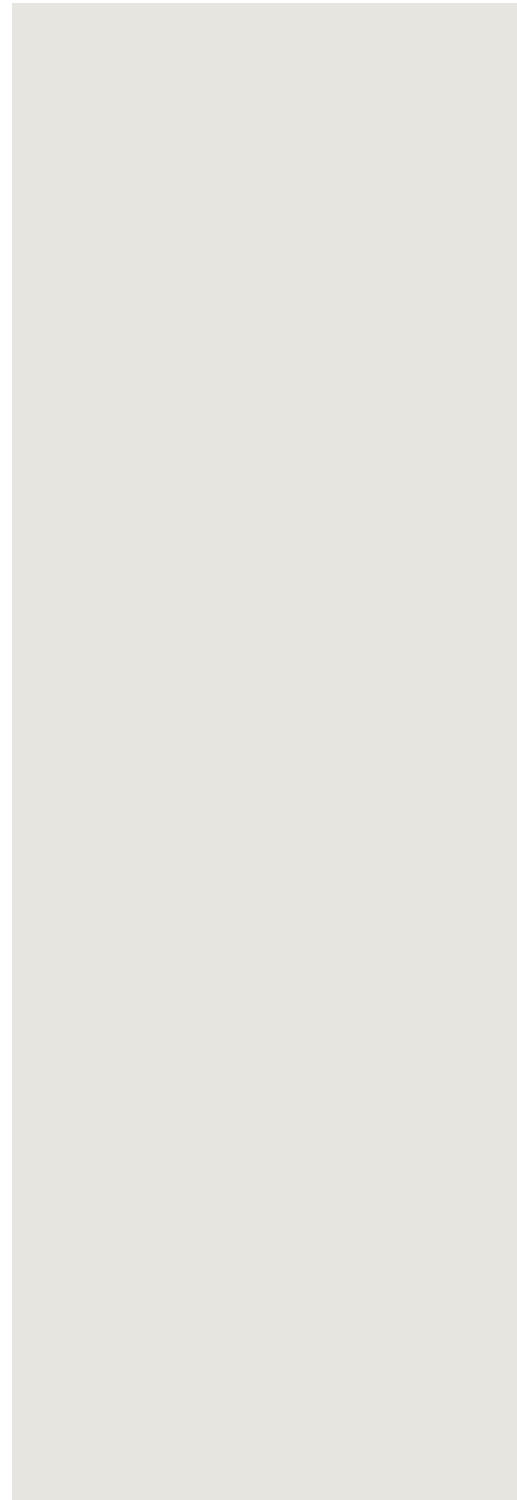
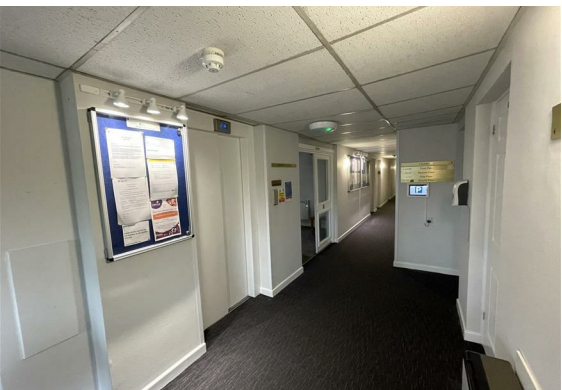
44 Alden Court Fairfield

Croydon, CR0 5QN

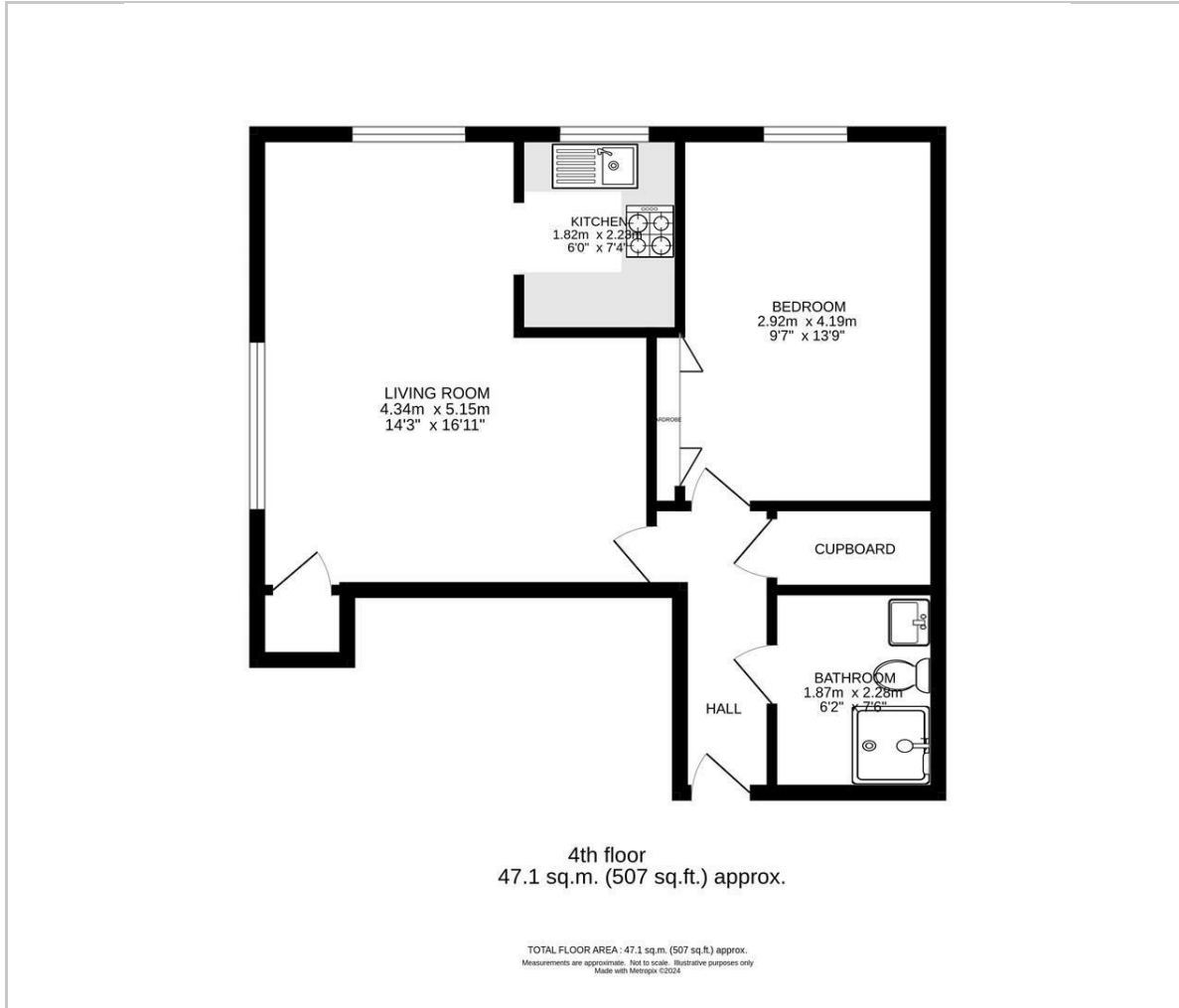
A truly larger than average top floor penthouse style apartment enjoying panoramic views across Park Hill Park and beyond. The property forms part of a popular over 60's (partner can be over 55), McCarthy Stone development and benefits from a spacious lounge/diner, kitchen, large shower room, large double bedroom with built in mirrored wardrobes, heating, double glazing, lift service, communal lounge with residents kitchen facilities, laundry room, guest suite, 24 hour care-line, residents parking, site manager, communal garden and grounds.

Superbly located for easy access to East Croydon Rail Station, Tramlink, Box park and Central Croydon Shopping and Leisure facilities. Council Tax Band D. EPC Rating D. Ground Rent £500 per annum. Service Charge ££3320 per annum. Lease 125 years from June 1988





Floor Plan



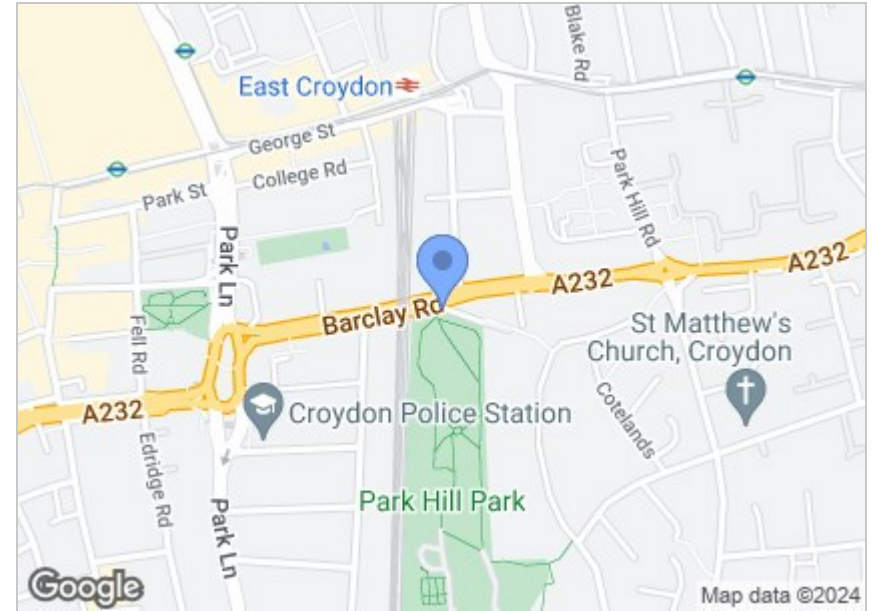
Viewing

Please contact our Cromwells Office on 0208 647 4422

if you wish to arrange a viewing appointment for this property or require further information.

These particulars, whilst believed to be accurate are set out as a general outline only for guidance and do not constitute any part of an offer or contract. Intending purchasers should not rely on them as statements of representation of fact, but must satisfy themselves by inspection or otherwise as to their accuracy. No person in this firm's employment has the authority to make or give any representation or warranty in respect of the property.

Area Map



Energy Efficiency Graph

