

52 Limpsfield Avenue, Thornton Heath, CR7 6BE



3



1



2

£409,950

Cromwells  
ESTATE AGENTS





## 52 Limpsfield Avenue

Thornton Heath, CR7 6BE

£409,950

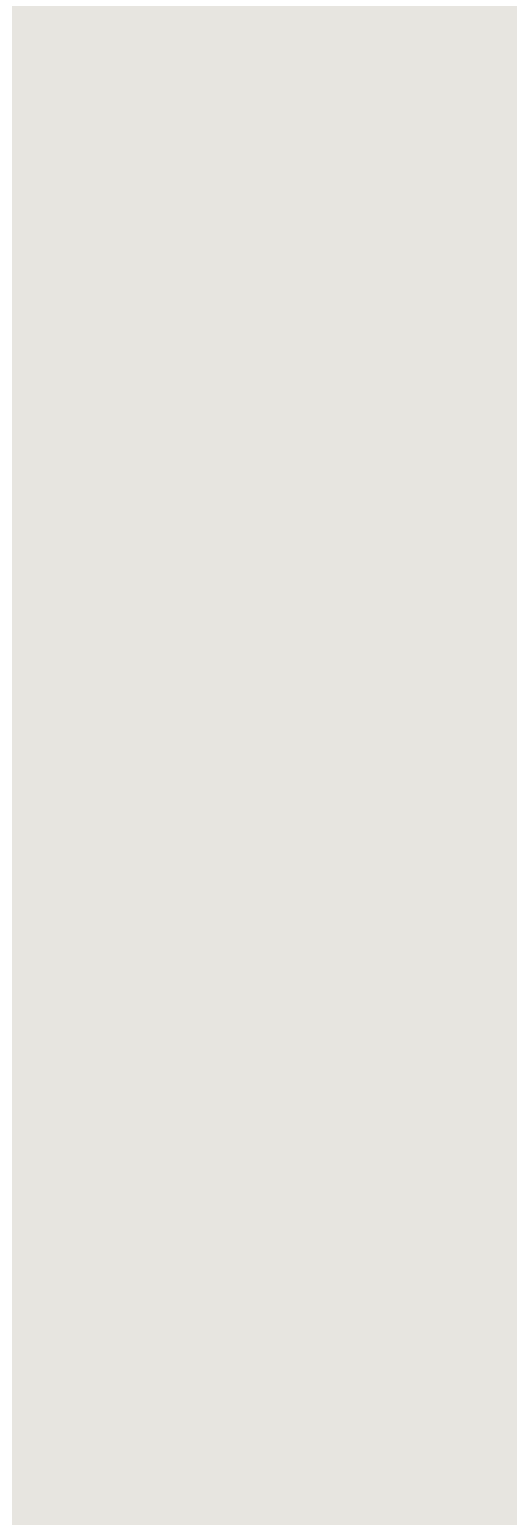
NO CHAIN! A fantastic chance to acquire this spacious 3 bedroom terraced house with 2 receptions, kitchen, conservatory, ground floor WC, first floor bathroom, gas central heating, mostly double glazed, scope for off street parking (STC) and a good size garden. This property needs refurbishment and has plenty of potential to extend.

Located for easy access to transport links, popular schools, local high street shops, restaurants and more.

EPC rating C. Council Tax Band D

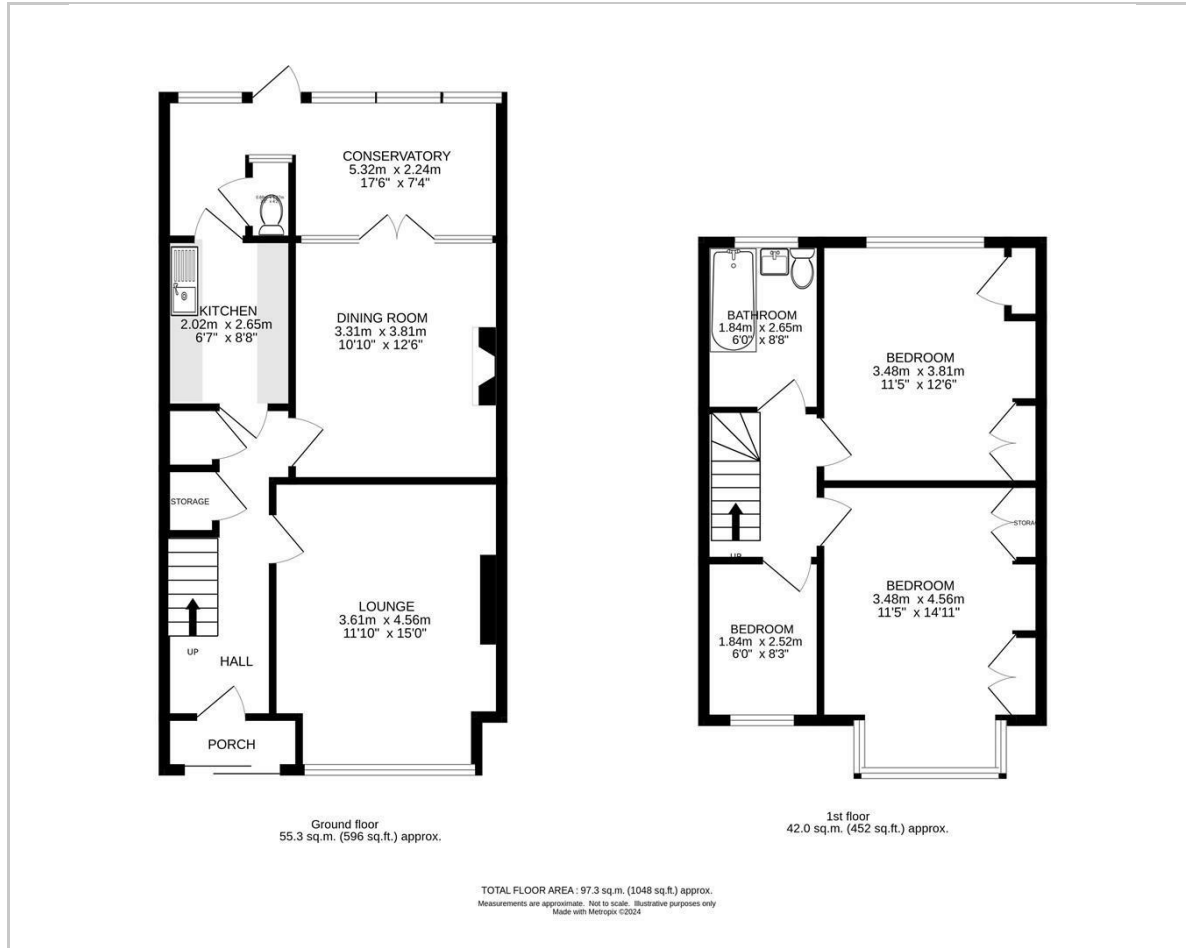




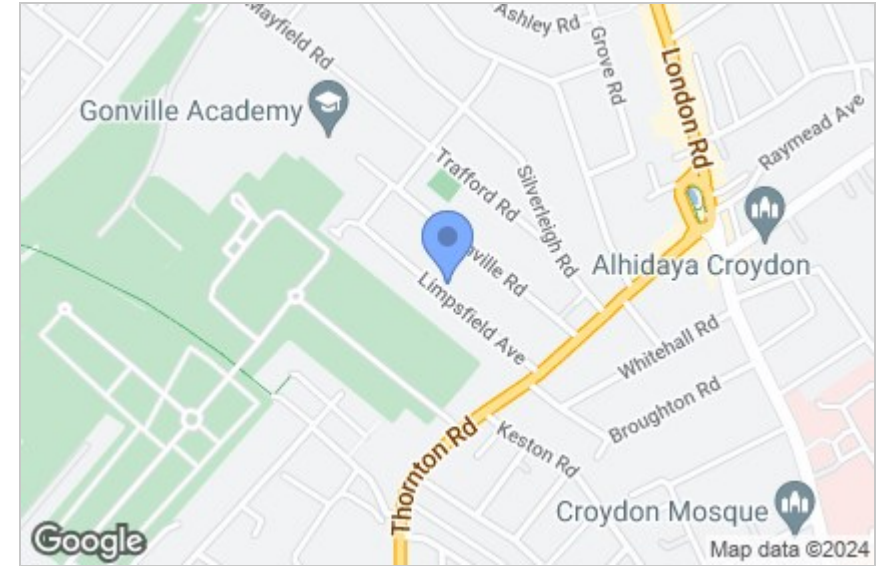




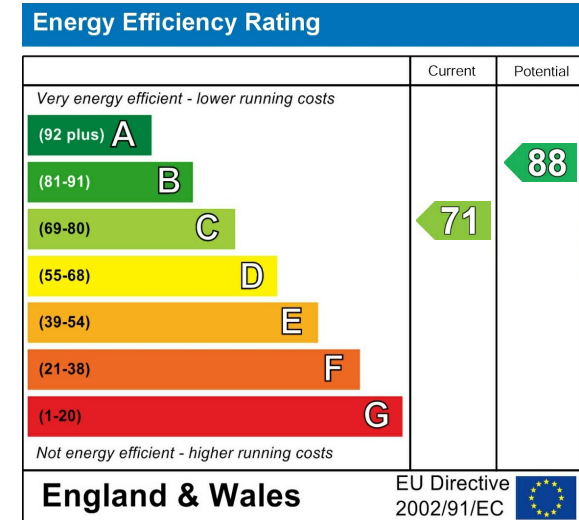
## Floor Plan



## Area Map



## Energy Efficiency Graph



## Viewing

Please contact our Cromwells Office on 0208 647 4422

if you wish to arrange a viewing appointment for this property or require further information.

These particulars, whilst believed to be accurate are set out as a general outline only for guidance and do not constitute any part of an offer or contract. Intending purchasers should not rely on them as statements of representation of fact, but must satisfy themselves by inspection or otherwise as to their accuracy. No person in this firm's employment has the authority to make or give any representation or warranty in respect of the property.