



Cromwells

Harcourt Lodge , 365 Croydon Road, Wallington, Surrey, SM6 7PB
Offers in Excess of £249,950

A spacious 2 Bedroom Ground Floor Flat in a popular block offered with NO CHAIN. Ideally located just 0.4 miles from the picturesque and historic Beddington Park. Wallington High Street with its abundance of shops and restaurants, as well as Westcroft leisure facilities are also close by. Wallington Mainline Station is just 0.5 miles away with its excellent service into London, making it ideal for those wanting to commute. Direct access to several bus routes are also on the doorstep.



***NO CHAIN *Ground Floor Flat
*Popular Location *Long Lease**

Hall

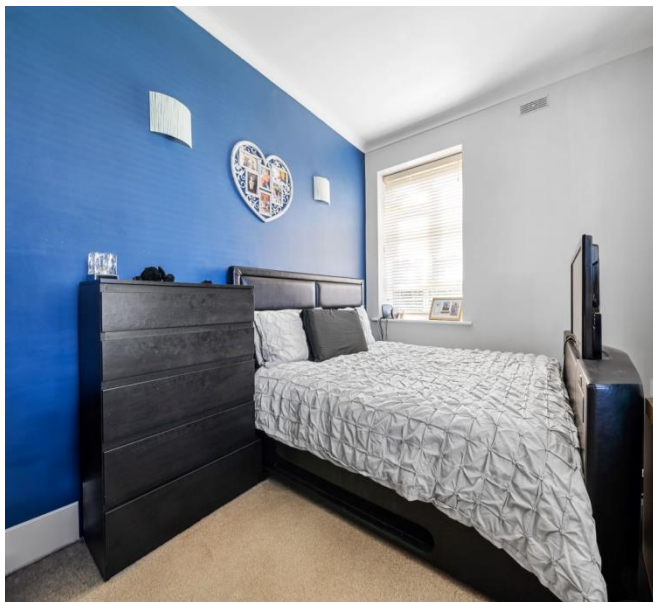
Storage cupboard

Reception Room - 13' 7" x 11' 10"
(4.14m x 3.60m)

Spacious reception room, with double door opening and a bay window

Kitchen - 9' 2" x 11' 10" (2.79m x 3.60m)

Bright and functional kitchen, storage cupboards, double glazed window



Bedroom 1 - 13' 1" x 12' 0" (3.98m x 3.65m)

Good size bedroom, double aspect windows

Bedroom 2 - 9' 2" x 9' 2" (2.79m x 2.79m)

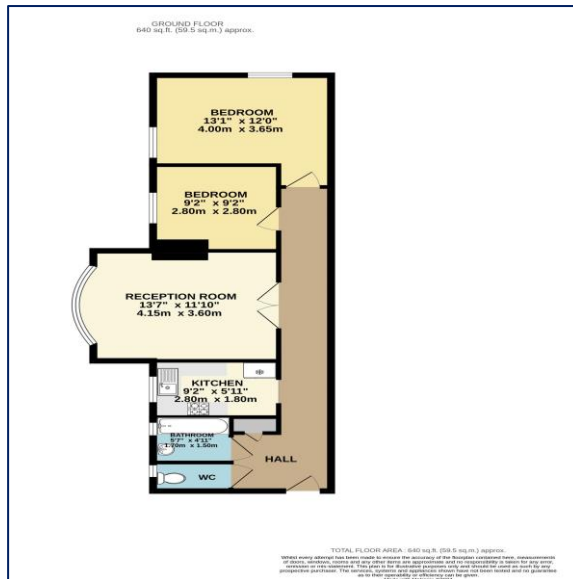
Good size bedroom, double glazed window

Bathroom - 5' 7" x 4' 11" (1.70m x 1.50m)

Modern bathroom

Separate WC





Council Tax - C
Local Authority: London Borough of Sutton
Tenure - Leasehold



95 Banstead Road
Carshalton
Surrey
SM5 3NP



020 8642 5468



admin@cromwellscarshalton.com



www.cromwellsestateagents.uk

Score	Energy rating	Current	Potential
92+	A		
81-91	B		
69-80	C		79 C
55-68	D	65 D	
39-54	E		
21-38	F		
1-20	G		



Disclaimer

These particulars are not an offer or contract, nor part of one. You should not rely on statements made by Cromwells in the particulars or by word of mouth or in writing ("information") as being factually accurate about the property, its condition or value. Neither Cromwells nor any joint agent has authority to make representations about the property, and accordingly any information given is entirely without responsibility on the part of the agents, seller(s) or lessor(s). Photographs show only certain parts of the property as they appeared at the time they were taken. Areas, measurements and distances are given as an approximate only. Any reference to alterations to or use of, any part of the property does not mean that any necessary planning, building regulations or other consents have been obtained