



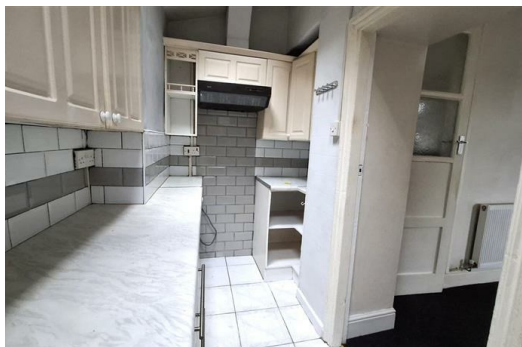
6 Rhyswg Road, Abercarn, Newport, NP11 5HA
£825 PCM

SAGE AND CO are pleased to offer TO LET spacious well presented TWO BEDROOM end terraced property situated in Abercarn The property is close to local amenities, schools and transport links. Briefly comprises lounge / dining room, kitchen, family bathroom, front patio area. Gas central heating and double glazed throughout.

AVAILABLE NOW
VIEWING HIGHLY RECOMMENDED

Applicants will require an annual income of over £28,285.00
Holding deposit £189.65
Bond £825.00

EPC RATING: D
COUNCIL TAX BAND: B



Lakeside House, Llantarnam Parkway, Cwmbran, NP44 3GA
Telephone: 01633 838 888 **Email:** cwmbran@sageandco.co.uk

www.sageandco.co.uk

