



29 Oak Road, Rogerstone, Newport, Gwent NP10 9FJ

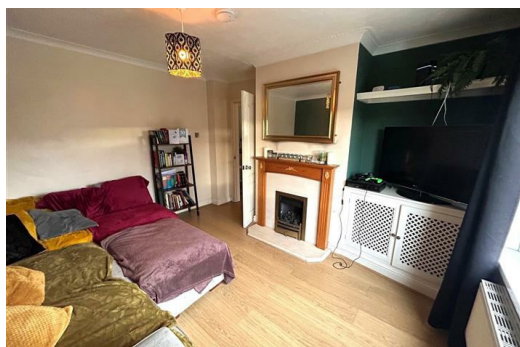
£1,100 PCM

SAGE & CO are delighted to offer TO LET this WELL PRESENTED THREE BEDROOM Mid Terraced property in Rogerstone, close to local amenities, in a desirable school catchment area and a short distance from the A467 leading to the M4 motorway.

The property comprises of a spacious entrance hallway, living room, kitchen/dining room, utility area and ground floor WC. To the first floor are three bedrooms and a MODERN BATHROOM with under floor heating. Further benefits include double glazing, gas central heating, GARAGE and additional parking.

Available end April 2024

Applicants will require an annual income of £37,714.00
Holding Deposit: £252.87



Lakeside House, Llantarnam Parkway, Cwmbran, NP44 3GA
Telephone: 01633 838 888 **Email:** cwmbran@sageandco.co.uk

www.sageandco.co.uk

