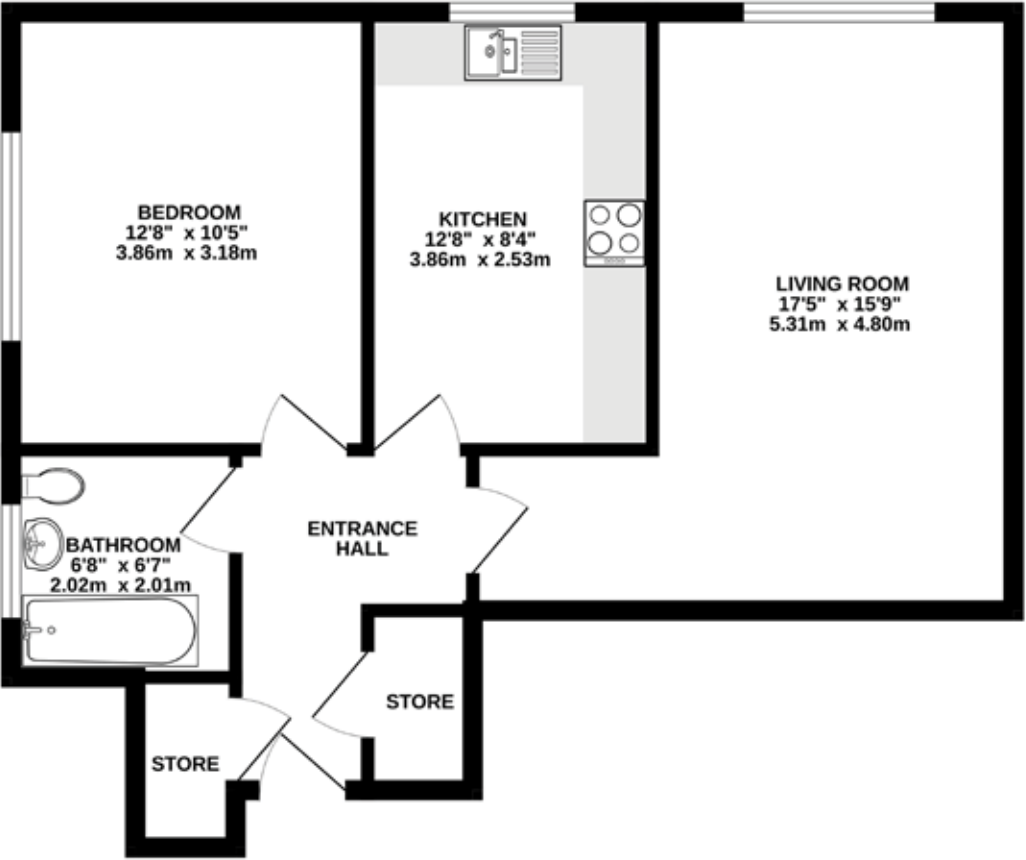


FIRST FLOOR
572 sq.ft. (53.1 sq.m.) approx.



TOTAL FLOOR AREA : 572 sq.ft. (53.1 sq.m.) approx.
While every attempt has been made to ensure the accuracy of the floorplan contained here, measurements of doors, windows, rooms and any other items are approximate and no responsibility is taken for any error, omission or mis-statement. This plan is for illustrative purposes only and should be used as such by any prospective purchaser. The services, systems and appliances shown have not been tested and no guarantee as to their operability or efficiency can be given.
Made with Metropia 0.0025



NOTICE
Gascoigne Halman for themselves and for the vendors or lessors of this property whose agents they are give notice that: (i) the particulars are set out as a general outline only for the guidance of intending purchasers or lessees, and do not constitute, nor constitute part of, an offer or contract; (ii) all descriptions, dimensions, references to condition and necessary permissions for use and occupation, and other details are given in good faith and are believed to be correct but any intending purchasers or tenants should not rely on them as statements or representations of fact but must satisfy themselves by inspection or otherwise as to the correctness of each of them; (iii) no person in the employment of Gascoigne Halman has any authority to make or give any representation or warranty whatever in relation to this property.

THE AREAS LEADING ESTATE AGENCY

Wilmslow
40, Alderley Road, WILMSLOW SK9 1NY
01625 536434 wilmslow@gascoignehalman.co.uk

gascoignehalman.co.uk



GASCOIGNE HALMAN

128A MANCHESTER ROAD
Wilmslow
£145,000



A light and spacious modern apartment located on the first floor within easy access to Wilmslow & Handforth centers with off road parking. Ideal for first time buyers and investors alike. Available with NO ONWARD CHAIN.

- Spacious One Bedroom Apartment
- Living Room With Separate Kitchen
- Close to Wilmslow Centre & Handforth Village
- First Floor Position
- Off Road Parking
- Available With NO CHAIN

£145,000

128A MANCHESTER ROAD

Wilmslow



DESCRIPTION

This delightful modern apartment boasts excellent sized accommodation throughout. Briefly comprising: communal entrance hall, a welcoming entrance hall, a spacious 17 foot living room plus a good sized separate kitchen with a range of base and eye level units. A good sized double bedroom and a modern fitted bathroom. Externally the property benefits from off road parking. This apartment is in a prime location and is an ideal property for a first time buyer or a buy-to-let investor. Please note: current annual service charge £1,767.65 (subject to verification by solicitors).

LOCATION

Conveniently situated within easy reach of Wilmslow town centre with its excellent range of shops and general services, restaurants and cafes. Wilmslow railway station is on the main line to London Euston and also provides a regular service to Manchester and surrounding districts. The North West motorway network is within a short drive as is Manchester Airport and the A34 Wilmslow by-pass which provides access to the large stores at Handforth Dean and Cheadle including Marks & Spencer, Tesco, John Lewis and Sainsburys. Wilmslow has a leisure centre and there are also a number of private sporting clubs in the area.

DIRECTIONS

Sat-Nav: SK9 2LE

TENURE

Leasehold for 99 years from 25/03/2004 with a ground rent of £100 p.a. and a service charge of £1,767.65 p.a. (Subject to verification by solicitors).

SERVICES (NOT TESTED)

Services have not been tested and you are advised to make your own enquiries and/or inspections.

LOCAL AUTHORITY

Cheshire East. Property Band: B.

VIEWING

Viewing strictly by appointment through the Agents.

TWENTY NETWORKED OFFICES THROUGHOUT CHESHIRE, SOUTH MANCHESTER & THE HIGH PEAK



gascoignealman.co.uk

GASCOIGNE HALMAN