



**GASCOIGNE  
HALMAN**

32A THE CIRCUIT, WILMSLOW SK9 6DB

---

THE AREAS LEADING ESTATE AGENT





## 32A THE CIRCUIT, WILMSLOW SK9 6DB

**£650,000**

**An attractive, modern detached family home situated on a quiet cul-de-sac in a popular South Wilmslow location offering superb space (1968 Sq Ft) with five bedrooms, three bathrooms and a large rear garden.**

- Modern Detached Family Home
- Spacious Accommodation Over Three Floors Measuring 1968 Sq Ft
- Five Bedrooms
- Three Modern Bathrooms
- Large Living-Dining Kitchen
- Large Rear Garden Measuring Over 90 ft In Length





This contemporary family home offers spacious and well-presented accommodation over three floors boasting an impressive 1968 Sq ft and comprises internally; welcoming entrance hallway, useful downstairs storage cupboard and downstairs wc, large front living room with bay-window and wall mounted fireplace. In addition there is a superb large living-dining kitchen with modern units, integrated appliances and two sets of French doors opening to the rear garden. There is also a separate utility room which is accessed via the kitchen. The ground floor accommodation benefits from underfloor heating.

To the first floor there three bedrooms including two large double bedrooms and a further single bedroom. Bedroom one comes with an en-suite shower room whilst the remaining two bedrooms are served by a stylish family bathroom with both bath and separate shower facilities. To the second floor there are two good-size double bedrooms, both offering generous eaves storage, serviced by a modern shower room.

Externally, to the front there is a driveway providing ample off-road parking, with gated side access which leads to a very large rear garden with patio area and well stocked borders.

The property enjoys a superb location on a quiet cul-de-sac in South Wilmslow close to local amenities and reputable primary schools.

#### LOCATION

Conveniently situated within easy reach of Wilmslow town centre with its excellent range of shops and general services, restaurants and wine bars. There are good schools in the area, both State and Private, for children of all ages. Wilmslow railway station is on the main line to London Euston and also provides a regular service to Manchester and surrounding districts. The North West motorway network is within a short drive as is Manchester Airport and the A34 Wilmslow by-pass which provides access to the stores at Handforth Dean and Cheadle. Wilmslow has a leisure centre and there are also a number of private sporting clubs in the area.

#### DIRECTIONS

Sat-Nav: SK9 6DB

#### TENURE

Freehold (subject to verification by solicitors).

#### SERVICES (NOT TESTED)

Services have not been tested and you are advised to make your own enquiries and/or inspections.

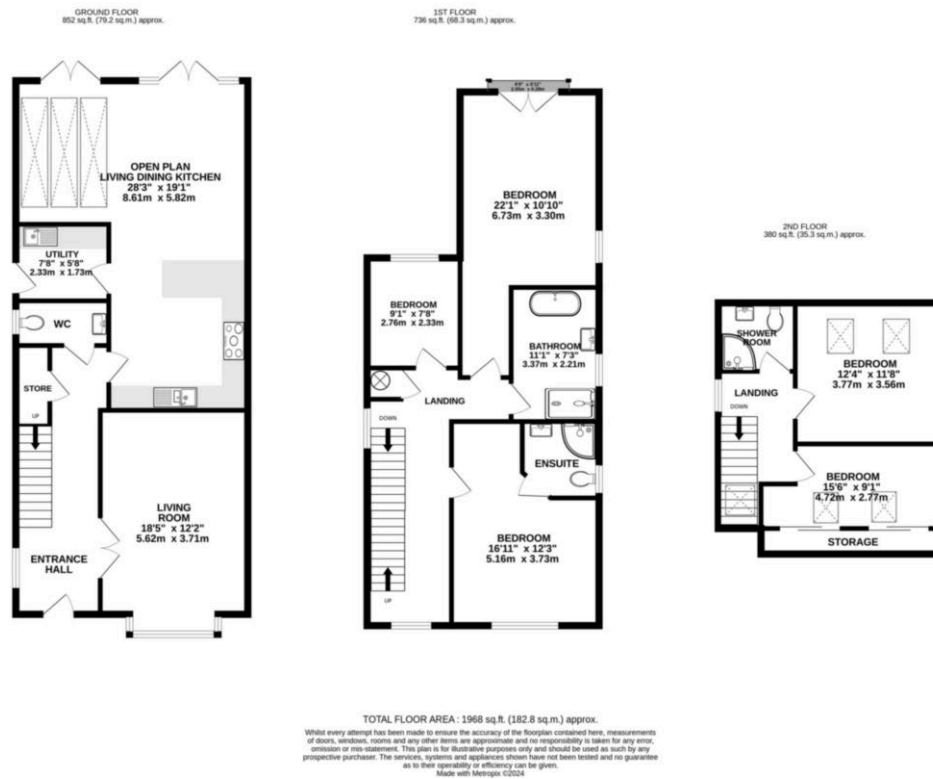
#### LOCAL AUTHORITY

Cheshire East. Property Band: G

#### VIEWING

Viewing strictly by appointment through the Agents.

## FLOORPLAN & EPC



NOTICE Gascoigne Halman for themselves and for the vendors or lessors of this property whose agents they are give notice that: (i) the particulars are set out as a general outline only for the guidance of intending purchasers or lessees, and do not constitute, nor constitute part of, an offer or contract; (ii) all descriptions, dimensions, references to condition and necessary permissions for use and occupation, and other details are given in good faith and are believed to be correct but any intending purchasers or tenants should not rely on them as statements or representations of fact but must satisfy themselves by inspection or otherwise as to the correctness of each of them; (iii) no person in the employment of Gascoigne Halman has any authority to make or give any representation or warranty whatever in relation to this property.



### WILMSLOW OFFICE

01625 536434

wilmslow@gascoignealman.co.uk

40 Alderley Road, Wilmslow, Cheshire, SK9 1NY

**GASCOIGNE  
HALMAN**