



**GASCOIGNE
HALMAN**

DAIRY COTTAGE, GOOSE LANE, HATTON

THE AREAS LEADING ESTATE AGENT



DAIRY COTTAGE, GOOSE LANE, HATTON

An attractive property in the heart of Hatton Village with gorgeous countryside views. With two reception rooms, three bedrooms, cobbled courtyard setting, parking and a single garage.

Offered for sale with no onward chain, Dairy Cottage sits in the heart of a much sought after semi rural village setting with stunning countryside views. The property would benefit from some upgrading but boasts wooden beamed ceilings, exposed brick fireplace and the accommodation briefly comprises an entrance vestibule, an excellent size living room and a further reception room / dining room. A kitchen with a range of base and eye level units and a WC complete the ground floor.





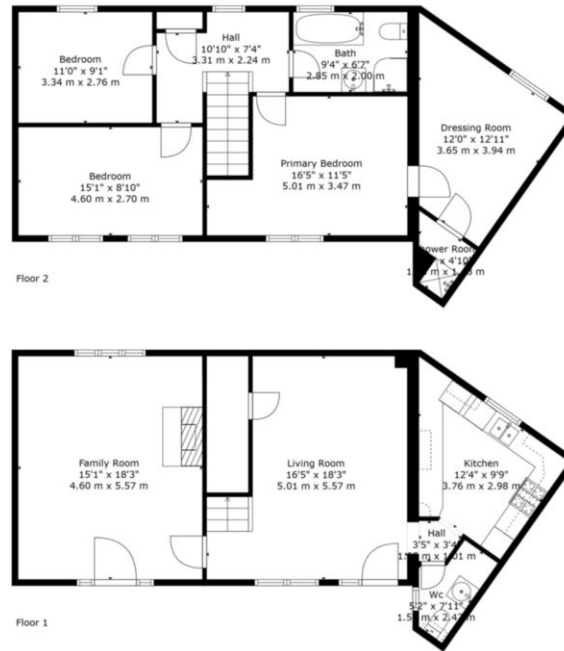
To the first floor are three good size bedrooms, the master with an en-suite shower room and a dressing room. A further bathroom serves the remaining bedrooms. Externally the property is positioned within a cobbled courtyard. Parking to the front of the property and single garage.

LOCATION

Stockton Heath village boasts a first-class range of shopping, schooling and recreational facilities. The nearby motorway system brings Manchester, Liverpool, Chester etc. within easy commuting distance and there are fast and frequent train services to London from local stations. Manchester International Airport can be reached normally in about twenty minutes by car and the area is surrounded by glorious Cheshire countryside.

DIRECTIONS

WA4 5PA



TOTAL: 1514 sq. ft, 140 m2
 FLOOR 1: 757 sq. ft, 70 m2, FLOOR 2: 757 sq. ft, 70 m2
 Floor Plan Created By Cubicasa App. Measurements Deemed Highly Reliable But Not Guaranteed.



NOTICE Gascoigne Halman for themselves and for the vendors or lessors of this property whose agents they are give notice that: (i) the particulars are set out as a general outline only for the guidance of intending purchasers or lessees, and do not constitute, nor constitute part of, an offer or contract; (ii) all descriptions, dimensions, references to condition and necessary permissions for use and occupation, and other details are given in good faith and are believed to be correct but any intending purchasers or tenants should not rely on them as statements or representations of fact but must satisfy themselves by inspection or otherwise as to the correctness of each of them; (iii) no person in the employment of Gascoigne Halman has any authority to make or give any representation or warranty whatever in relation to this property.

STOCKTON HEATH OFFICE

01925 860400

stocktonheath@gascoignehalman.co.uk

29 Walton Road, Stockton Heath

