



**GASCOIGNE
HALMAN**

18A LINDI AVENUE, GRAPPENHALL, WARRINGTON

THE AREAS LEADING ESTATE AGENT

A beautifully presented, deceptively large end terrace with two receptions rooms, dining kitchen, useful laundry/Wc. two double bedrooms and family bathroom with a good sized garden and off road parking.

This property offers excellent accommodation throughout and comprises entrance porch leading into the modern dining kitchen, lounge with french doors into the side garden, family room and a very useful laundry/Wc room. To the first floor there are two double bedrooms and a family bathroom. Off road parking for several vehicles and a good sized garden.

LOCATION

Stockton Heath village boasts a first-class range of shopping, schooling and recreational facilities. The nearby motorway system brings Manchester, Liverpool, Chester etc. within easy commuting distance and there are fast and frequent

train services to London from local stations. Manchester International Airport can be reached normally in about twenty minutes by car and the area is surrounded by glorious Cheshire countryside.

DIRECTIONS

SAT NAV: WA4 2SJ

TENURE

Freehold

LOCAL AUTHORITY

Warrington BC - Council Tax Band A

EPC RATING

Current D / Potential B

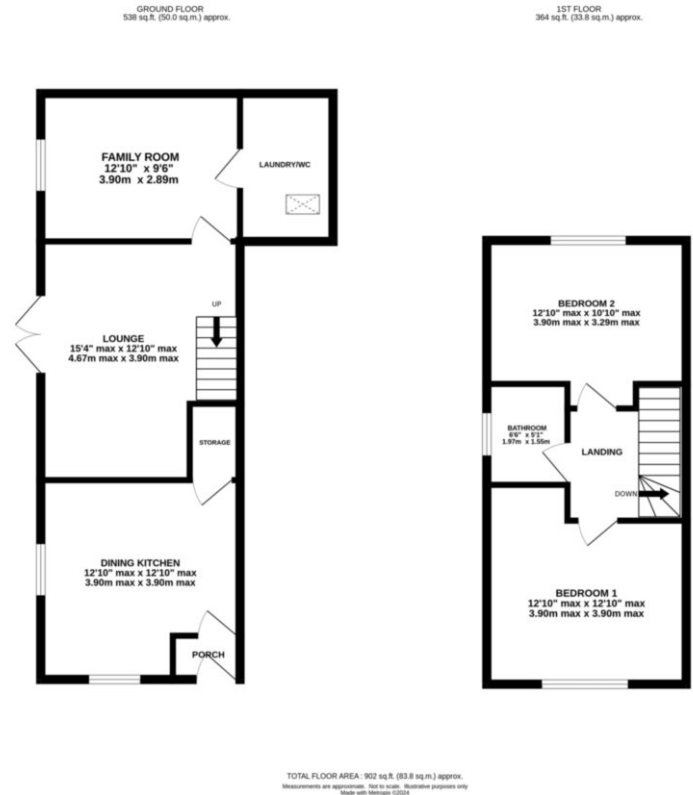
STOCKTON HEATH OFFICE

01925 860 400

stocktonheath@gascoignealman.co.uk

29 Walton Road, Stockton Heath

**GASCOIGNE
HALMAN**



NOTICE Gascoigne Halman for themselves and for the vendors or lessors of this property whose agents they are give notice that: (i) the particulars are set out as a general outline only for the guidance of intending purchasers or lessees, and do not constitute, nor constitute part of, an offer or contract; (ii) all descriptions, dimensions, references to condition and necessary permissions for use and occupation, and other details are given in good faith and are believed to be correct but any intending purchasers or tenants should not rely on them as statements or representations of fact but must satisfy themselves by inspection or otherwise as to the correctness of each of them; (iii) no person in the employment of Gascoigne Halman has any authority to make or give any representation or warranty whatever in relation to this property.