



**GASCOIGNE
HALMAN**

LAND OFF LONDON ROAD, APPLETON

THE AREAS LEADING ESTATE AGENT

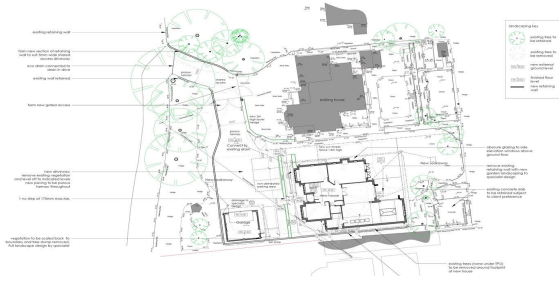


LAND OFF LONDON ROAD, APPLETON

LAND FOR SALE with PLANNING PERMISSION. Situated in a superb location, within close proximity to Stockton Heath Village. Build your dream home on this fantastic freehold plot! (Photos and design for illustration purposes).

Planning Approved. An exciting and rare opportunity to build your own five double bedroom, detached home in the highly sought after location. With a generous foot print approaching 4500 sq ft plus detached double garaging, this really could be a magnificent home which you can design and build to your own specification and layout.





LOCATION

Stockton Heath village boasts a first-class range of shopping, schooling and recreational facilities. The nearby motorway system brings Manchester, Liverpool, Chester etc. within easy commuting distance and there are fast and frequent train services to London from local stations. Manchester International Airport can be reached normally in about twenty minutes by car and the area is surrounded by glorious Cheshire countryside.

DIRECTIONS

Sat Nav: WA4 5BJ

TENURE

Freehold

LOCAL AUTHORITY

Warrington BC



NOTICE Gascoigne Halman for themselves and for the vendors or lessors of this property whose agents they are give notice that: (i) the particulars are set out as a general outline only for the guidance of intending purchasers or lessees, and do not constitute, nor constitute part of, an offer or contract; (ii) all descriptions, dimensions, references to condition and necessary permissions for use and occupation, and other details are given in good faith and are believed to be correct but any intending purchasers or tenants should not rely on them as statements or representations of fact but must satisfy themselves by inspection or otherwise as to the correctness of each of them; (iii) no person in the employment of Gascoigne Halman has any authority to make or give any representation or warranty whatever in relation to this property.

STOCKTON HEATH OFFICE

01925860400

stocktonheath@gascoignehalman.co.uk

29 Walton Road, Stockton Heath

**GASCOIGNE
HALMAN**