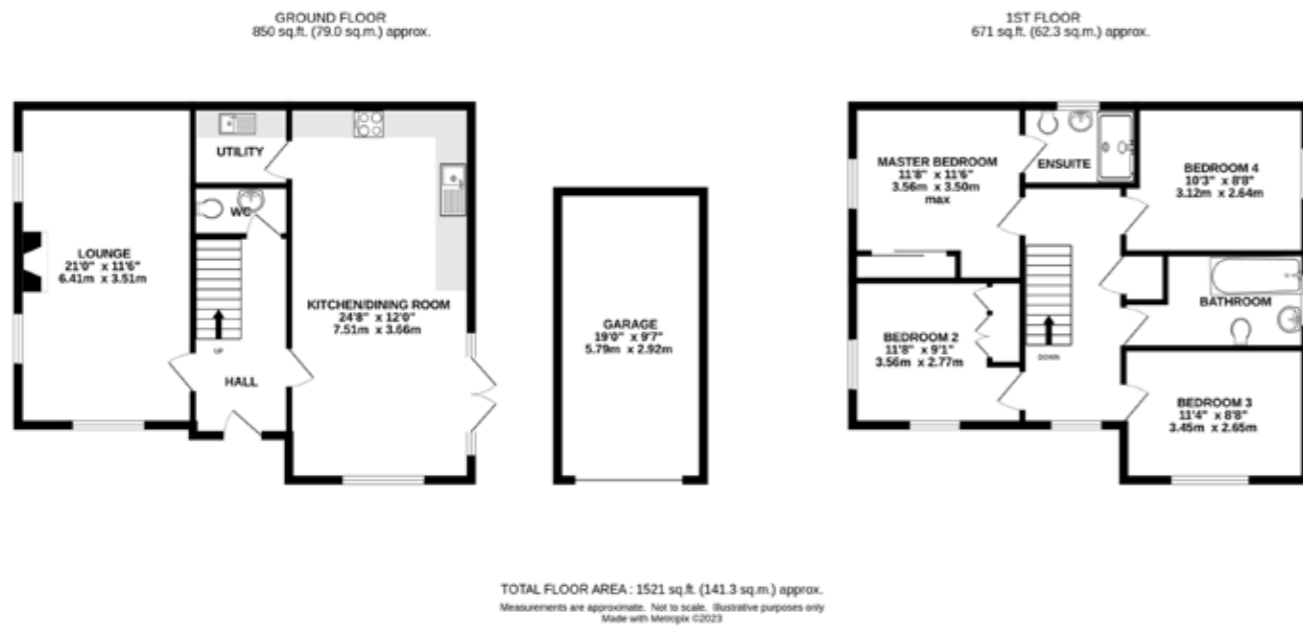


16 COTTON CRESCENT
 Tytherington
£550,000



NOTICE
 Gascoigne Halman for themselves and for the vendors or lessors of this property whose agents they are give notice that: (i) the particulars are set out as a general outline only for the guidance of intending purchasers or lessees, and do not constitute, nor constitute part of, an offer or contract; (ii) all descriptions, dimensions, references to condition and necessary permissions for use and occupation, and other details are given in good faith and are believed to be correct but any intending purchasers or tenants should not rely on them as statements or representations of fact but must satisfy themselves by inspection or otherwise as to the correctness of each of them; (iii) no person in the employment of Gascoigne Halman has any authority to make or give any representation or warranty whatever in relation to this property.

THE AREAS LEADING ESTATE AGENCY

Prestbury
 Spindles, The Village, PRESTBURY SK10 4DG
 01625 827467 prestbury@gascoignehalman.co.uk

gascoignehalman.co.uk



GASCOIGNE HALMAN

Located on the highly regarded Mulberry Park development by Red Row homes this bright and spacious detached home occupies a corner plot on this quiet cul-de-sac.

- MULBERRY PARK BY REDROW HOMES
- CORNER POSITION
- DRIVEWAY & GARAGE

- 4 DOUBLE BEDROOMS
- NHBC WARRANTY
- WESTERLY FACING GARDEN

£550,000

16 COTTON CRESCENT

Tytherington



DESCRIPTION

Mulberry Park is a highly sought after modern development recently constructed by Redrow. The development features a range of appealing homes in differing styles with an attractive backdrop over to the hills. No.16 Cotton Crescent occupies a pleasant corner position with large driveway and detached single garage and is built in the Shaftesbury style. The property comprises in brief; Entrance Hall, Cloaks/WC, Lounge, open plan Dining Kitchen with sitting area, Utility Room.

At first floor level; Landing, Main Bedroom with ensuite, three further good size double bedrooms and a main bathroom. Externally the home features well-kept gardens of a Westerly facing orientation - predominantly laid to lawn with stocked borders, patio area and secure fencing. To the front of the home is tarmacadam drive with parking for three vehicles and a detached pitched roof single garage.

LOCATION

Tytherington is situated betwixt Prestbury Village and Macclesfield Town (with direct rail links to London under two hours) and offers excellent transport links to Manchester International Airport. Predominantly a residential area it has a small shopping centre with supermarket, post office, hairdressers and other sole traders.

DIRECTIONS

SAT NAV - SK10 2BT - Cotton Crescent is located off Springwood Way

TENURE

Freehold - To be verified by Solicitors
SERVICES (NOT TESTED)
 Services have not been tested and you are advised to make your own enquiries and/or inspections.
LOCAL AUTHORITY
 Cheshire East - Council Tax Band E
VIEWING
 Viewing strictly by appointment through the Agents.

TWENTY NETWORKED OFFICES THROUGHOUT CHESHIRE, SOUTH MANCHESTER & THE HIGH PEAK



gascoignealman.co.uk

GASCOIGNE HALMAN