



**GASCOIGNE
HALMAN**

LONGCROFT

THE AREAS LEADING ESTATE AGENT



| WITHINLEE ROAD, PRESTBURY

LONGCROFT

A superior residence of most impressive proportions occupying a private south-facing plot on one of Cheshires finest roads.

Longcroft is a striking contemporary home set within a mature plot in this highly regarded location.

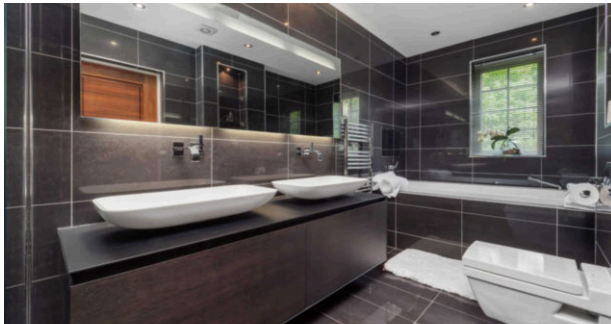
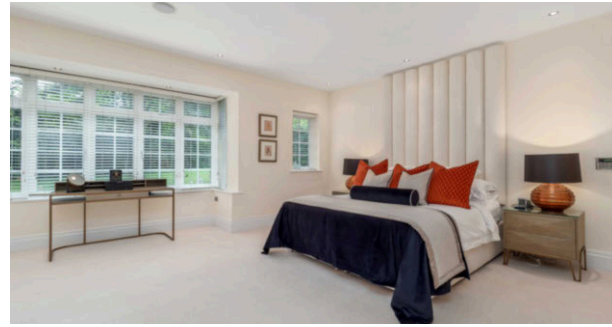
The accommodation is presented and appointed to a superb standard and provides extensive, functional and versatile accommodation throughout.

The home features stunning internal details including walnut doors, Lutron lighting system, audio and visual hardwired systems in the principal rooms and a compliment of luxury bathrooms with Duravit & Antonio Lupi fittings.

At ground floor level the impressive entrance opens out into a stunning reception hall showcasing the galleried landing with access to Lounge, Snug, Media Room, Study and the hub of the home - a magnificent open plan living/kitchen/dining space with the sumptuous kitchen very recently refitted by the highly acclaimed Tom Howley.

At first floor level; Galleried landing and roof lantern, superb Master Bedroom suite with dressing room and luxury ensuite, four further excellent size rooms (three with ensuite facilities) and a family bathroom.





GROUNDS

Externally Longcroft sits within well stocked mature gardens with large areas laid to lawn, stocked borders and a wide variety of specimen trees, shrubs and flowers.

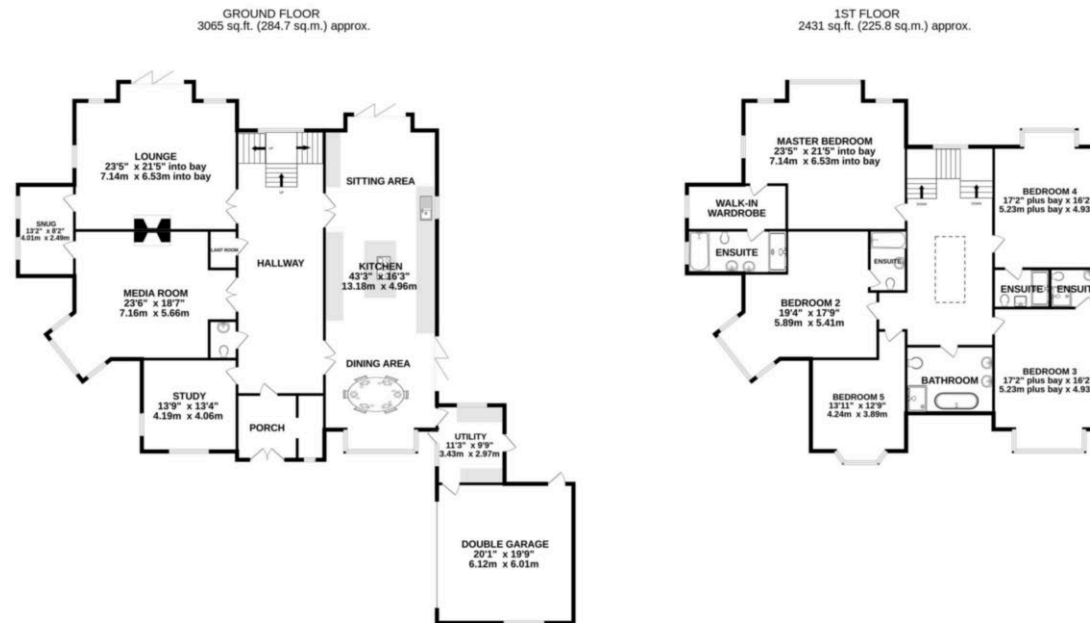
Furthermore there is a large slate flagged patio to the rear of the property with an attractive retaining structure with cascading flower beds and staircase leading up to a top level tier of garden and further patio.

An extensive resin-bond drive provides hard standing for several motor vehicles and the home is accessed via automated gates.

LOCATION

The historical Village of Prestbury is regarded as one of the most picturesque villages in Cheshire. Suitable for a broad demographic the Village boasts excellent access to all the amenities of the general area; Railway Station, Local shops, Restaurants and Bars/Pubs, a highly regarded Primary School, Tennis Club and Prestbury Golf Club to name a few.

Alderley Edge and Wilmslow are only a very short distance away offering more comprehensive facilities and the town of Macclesfield is a very short distance with a direct link to London Euston in approx. 1 hour 40 mins. Manchester Airport and the motorway network are within 20 minutes drive.



TOTAL FLOOR AREA: 5495 sq.ft. (510.5 sq.m.) approx.
 Measurements are approximate. Not to scale. Illustrative purposes only.
 Made with Metropix ©2023

NOTICE Gascoigne Halman for themselves and for the vendors or lessors of this property whose agents they are give notice that: (i) the particulars are set out as a general outline only for the guidance of intending purchasers or lessees, and do not constitute, nor constitute part of, an offer or contract; (ii) all descriptions, dimensions, references to condition and necessary permissions for use and occupation, and other details are given in good faith and are believed to be correct but any intending purchasers or tenants should not rely on them as statements or representations of fact but must satisfy themselves by inspection or otherwise as to the correctness of each of them; (iii) no person in the employment of Gascoigne Halman has any authority to make or give any representation or warranty whatever in relation to this property.

PRESTBURY OFFICE

01625 827 467

prestbury@gascoignehalman.co.uk

Gascoigne Halman, Spindles, The Village, Prestbury, SK10 4DG

**GASCOIGNE
HALMAN**