

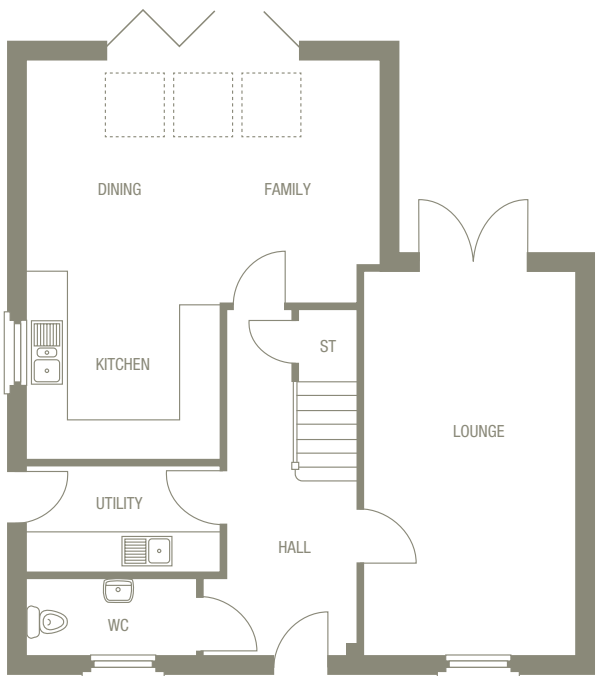
The Waddesdon

4 bedroom detached with single garage.

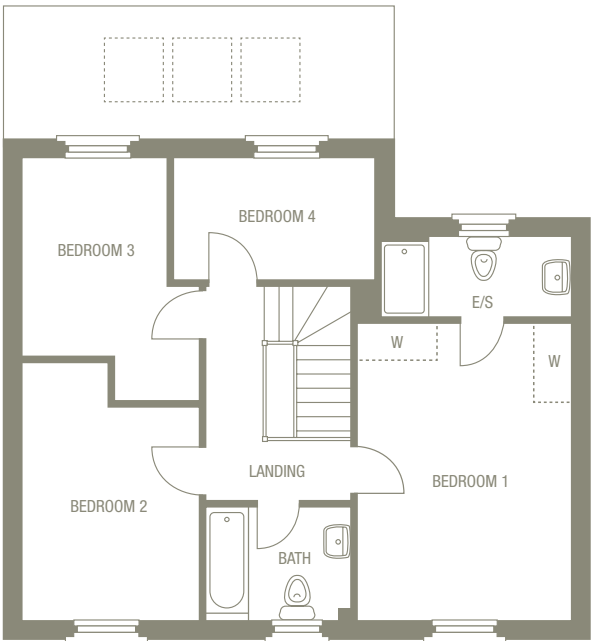


Blending traditional charm and architecture with an impressively spacious layout and contemporary interior, The Waddesdon is everything you look for in the family home of today, and more.





Ground Floor		
Room	Size	
Lounge	3300 x 6025mm	10'10" x 19'9"
Kitchen/Family/ Dining	5540* x 6265mm*	18'2"* x 20'7"*
Utility	3000 x 1625mm	9'8" x 5'4"
WC/Cloak	2650 x 1170mm	8'7" x 3'10"



First Floor		
Room	Size	
Bedroom 1	3360 x 4675mm	11'0" x 15'4"
En-suite	2995 x 1265mm	9'10" x 4'2"
Bedroom 2	2775 x 4060*mm	9'1" x 13'4"*
Bedroom 3	2775* x 3810*mm	9'1"* x 10'5"*
Bedroom 4	3180 x 1910mm	10'5" x 6'3"
Bathroom	2310 x 1780mm	7'7" x 5'10"

1,410 total sq ft

*Denotes maximum room dimensions.
This is a computer generated image of The Waddesdon, elevation treatment may vary. All internal images are indicative of a Morris house type. Room sizes are approximate. Plots may be handed and any garages may be single or double. Kitchen and bathroom layouts are indicative. These plans are correct at time of going to press, but may be subject to change during construction. Please ensure that you check for specific plot details.

