



**GASCOIGNE  
HALMAN**

BLUEBELL MEWS, CAVENDISH CLOSE,  
MACCLESFIELD

---

THE AREAS LEADING ESTATE AGENT

| £215,000

A well presented spacious ground floor apartment forming part of this extremely popular development built to a most appealing design in old Cheshire brick.

The apartment is suitable to those aged 60 years and over and stands in fabulous, well maintained communal grounds and also benefitting from communal parking.

The accommodation, in brief, comprises of a communal entrance hall leading to the properties private entrance hall having a good sized walk in storage cupboard and an airing cupboard. The open plan dining room/lounge is lovely and light with a large bay window and a further side window. There is ample room for both sitting and dining. The main focal point of this room is a great marble fireplace with matching hearth housing an electric fire.

The kitchen has a range of oak units with a Zanussi oven, hob and extractor fan over. There is a cupboard housing the gas fired central heating boiler and a window to the rear aspect.

There are two bedrooms both of which have fitted wardrobes and a window to the front aspect. The master bedroom is of a good size.

The shower room is attractively fitted in a three piece

suite having a walk in shower.

Outside the property has communal gardens and parking.

#### LOCATION

Tytherington is situated a few minutes drive from Macclesfield Town Centre (with direct rail links to London under two hours) and offers excellent transport links to Manchester International Airport. Predominantly a residential area it has a small shopping centre with supermarket, post office, hairdressers and other sole traders. It also boasts the highly regarded Tytherington Links Development made up of attractive modern homes and also the Tytherington Club which offers an 18 Hole Championship Golf Course and state-of-the-art leisure facilities.

#### DIRECTIONS

SAT NAV - SK10 2GG. Cavendish Close is located off Dorchester Way. Follow the road around to the right and Bluebell Mews is located at the end of the road.

#### EPC RATING C CHESHIRE EAST BAND C

### MACCLESFIELD OFFICE

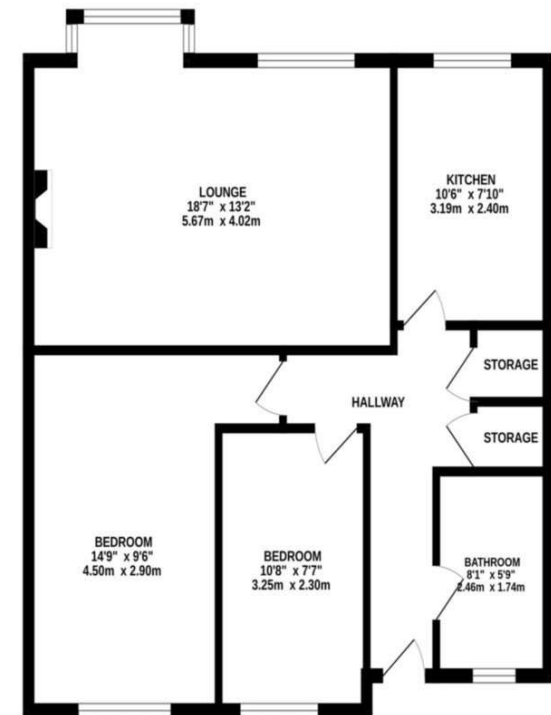
01625 511367

macclesfield@gascoignehalman.co.uk

80 - 82 Waters Green, Macclesfield, SK11 6LH

**GASCOIGNE  
HALMAN**

GROUND FLOOR  
675 sq.ft. (62.7 sq.m.) approx.



TOTAL FLOOR AREA: 675 sq.ft. (62.7 sq.m.) approx.  
Measurements are approximate. Not to scale. Illustrative purposes only.  
Made with Metageo 12/24

NOTICE Gascoigne Halman for themselves and for the vendors or lessors of this property whose agents they are give notice that: (i) the particulars are set out as a general outline only for the guidance of intending purchasers or lessees, and do not constitute, nor constitute part of, an offer or contract; (ii) all descriptions, dimensions, references to condition and necessary permissions for use and occupation, and other details are given in good faith and are believed to be correct but any intending purchasers or tenants should not rely on them as statements or representations of fact but must satisfy themselves by inspection or otherwise as to the correctness of each of them; (iii) no person in the employment of Gascoigne Halman has any authority to make or give any representation or warranty whatever in relation to this property.