



**GASCOIGNE  
HALMAN**

BLUEBELL MEWS, CAVENDISH CLOSE,  
TYTHERINGTON

---

THE AREAS LEADING ESTATE AGENT

| £209,000

A spacious beautifully presented modern first floor apartment with a stairlift for ease of access. Two good size double bedrooms, lounge/dining room, beautifully refitted kitchen and a shower room.

A beautifully presented modern apartment situated in a lovely Cheshire brick built complex suited for people aged 60 years and above. This property is situated on the first floor but comes with a stairlift from the communal areas for ease of access.

Upon entering the apartment block you are greeted by the light and airy communal hall with a lovely arched double glazed window to the front aspect and having stairs and the stairlift giving access to the first floor. The property has a well proportioned private access hall with loft access and two built in storage cupboards.

There is a lovely sized open plan lounge and dining room with a large bay window and an additional window looking over the rear aspect. There is an attractive sandstone effect fireplace with marble hearth and inlay housing an electric fire. The kitchen has been recently refitted with a quality range of white high gloss units with integrated double oven and grill unit, an induction hob, a dishwasher and ample space for a washing machine and a fridge/freezer. There is cupboard housing the recently installed Vaillant gas fired combination boiler and a window overlooking the rear aspect.

The master bedroom being a wonderful size has a range of fitted wardrobes and a view to the front. The second bedroom is a good sized double room and again having a view to the front aspect.

The shower has been beautifully refitted in a three piece suite with a walk in shower cubicle, low level WC and a hand basin and benefits from having a heated towel rail.

The apartment has uPVC double glazing fitted throughout and is warmed by gas fired central heating.

Outside the property stands in well-maintained attractive communal gardens and has communal parking.

#### LOCATION

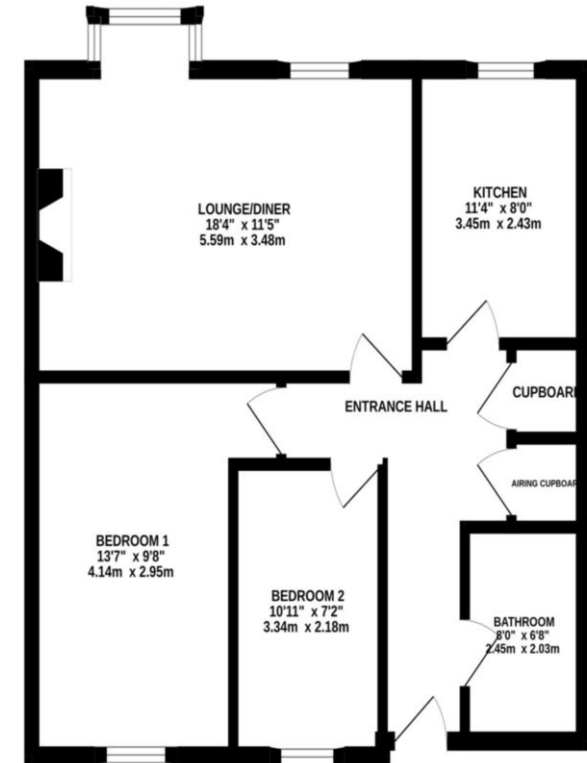
Tytherington is situated a few minutes drive from Macclesfield Town Centre (with direct rail links to London under two hours) and offers excellent transport links to Manchester International Airport. Predominantly a residential area it has a small shopping centre with supermarket, post office, hairdressers and other sole traders. It also boasts the highly regarded Tytherington Links Development made up of attractive modern homes and also the Tytherington Club which offers an 18 Hole Championship Golf Course and state-of-the-art leisure facilities.

#### DIRECTIONS

SAT NAV - SK10 2GG. Cavendish Close is located off Dorchester Way. Follow the road around to the right and Bluebell Mews is located at the bottom of the road.

EPC RATING TBC CHESHIRE EAST BAND C

GROUND FLOOR  
679 sq.ft. (63.1 sq.m.) approx.



TOTAL FLOOR AREA: 679 sq.ft. (63.1 sq.m.) approx.  
Measurements are approximate. Not to scale. Illustrative purposes only.  
Made with Metagen 03204

#### MACCLESFIELD OFFICE

01625 511367

macclesfield@gascoignehalman.co.uk

80 - 82 Waters Green, Macclesfield, SK11 6LH

**GASCOIGNE  
HALMAN**

NOTICE Gascoigne Halman for themselves and for the vendors or lessors of this property whose agents they are give notice that: (i) the particulars are set out as a general outline only for the guidance of intending purchasers or lessees, and do not constitute, nor constitute part of, an offer or contract; (ii) all descriptions, dimensions, references to condition and necessary permissions for use and occupation, and other details are given in good faith and are believed to be correct but any intending purchasers or tenants should not rely on them as statements or representations of fact but must satisfy themselves by inspection or otherwise as to the correctness of each of them; (iii) no person in the employment of Gascoigne Halman has any authority to make or give any representation or warranty whatever in relation to this property.