

**GASCOIGNE
HALMAN**

69 BRIDGE STREET, MACCLESFIELD

THE AREAS LEADING ESTATE AGENT

| ASKING PRICE £180,000

An absolutely stunning terrace house with accommodation over three floors. Great size dining kitchen, two double bedrooms and a bathroom finished to very high standards. Communal yard and a brick store.

This mid-terraced house is ready to move into, enjoying a great location in the town centre. The house really has been refurbished to very high standards, with the lounge showcasing a porcelain tiled floor, feature radiator and a Rais QTee wood burning stove. The luxury bathroom is done to exacting standards and features a spacious shower with wet floor, statement matt black brassware and a steel enamel bathtub.

On the lower ground floor is the spacious dining kitchen with a door and windows to the rear. On the top floor, there are two double bedrooms. Luxurious Zehnder radiators are situated throughout the home. This house must be viewed to understand the quality throughout.

DIRECTIONS

Leaving Macclesfield on Roe Street towards Bond Street, take the second right into Bridge Street after Churchill Way and the property can be found on the left hand side. Postcode: SK11 6PY

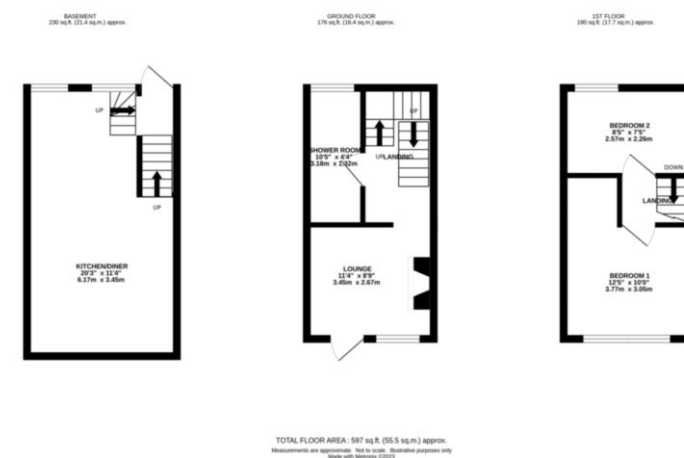
LOCATION

Macclesfield is a thriving market town that provides a comprehensive range of shops, varied social and recreational amenities and good schools for children of all ages. For the commuter, Manchester International Airport and its connection with the North West motorway network are approximately thirty minutes away by car and the railway station in Macclesfield provides fast and frequent Intercity and commuter links with Manchester, London and the surrounding business centres.

EPC RATING D CHESHIRE EAST BAND A

MACCLESFIELD OFFICE

**GASCOIGNE
HALMAN**



NOTICE Gascoigne Halman for themselves and for the vendors or lessors of this property whose agents they are give notice that: (i) the particulars are set out as a general outline only for the guidance of intending purchasers or lessees, and do not constitute, nor constitute part of, an offer or contract; (ii) all descriptions, dimensions, references to condition and necessary permissions for use and occupation, and other details are given in good faith and are believed to be correct but any intending purchasers or tenants should not rely on them as statements or representations of fact but must satisfy themselves by inspection or otherwise as to the correctness of each of them; (iii) no person in the employment of Gascoigne Halman has any authority to make or give any representation or warranty whatever in relation to this property.