



**GASCOIGNE
HALMAN**

TURNER ROAD, KNUTSFORD

THE AREAS LEADING ESTATE AGENT



TURNER ROAD, KNUTSFORD

Situated on the exclusive Tabley Park by Redrow, this outstanding detached residence offers luxury living in one of Knutsford's most desirable settings. Boasting a generous rear garden, private driveway, and detached double garage, this stunning home combines striking design with premium finishes - perfect for discerning buyers seeking comfort, style, and convenience.

This beautifully presented family home features three spacious double bedrooms, each with its own en-suite, and a thoughtfully designed open-plan interior that maximizes natural light. At the heart of the home is a superb, hand-painted living-dining kitchen, complete with Silestone work surfaces, a central island, and French doors opening out to the rear garden - ideal for modern family living and entertaining alike.

The elegant ground floor offers a welcoming central hallway that sets the tone with its contemporary décor. A refined formal living room provides a peaceful space to relax, while the expansive open-plan kitchen/dining/living area creates a vibrant hub for everyday living. A separate utility room and a stylish downstairs W.C. complete the layout on this level.

Upstairs, the home continues to impress. Each of the three double bedrooms benefits from luxurious en-suite facilities and bespoke shutters. The magnificent principal suite is further enhanced by a walk-in dressing room and a spacious en-suite bathroom with a separate walk-in double shower.

Externally, the enclosed rear garden offers a peaceful retreat, perfect for family use or entertaining guests. The private driveway, which includes an EV charging point, leads to a detached double garage providing excellent parking and storage solutions.

Perfectly positioned on the edge of the picturesque market town of Knutsford, this home enjoys almost a semi-rural feel while remaining close to excellent transport links, including the motorway network and Manchester Airport. The area also offers highly regarded schools and access to beautiful countryside walks, making this a rare opportunity to secure a truly special home in an unbeatable location.



DIRECTIONS

SAT NAV: WA16 0GR

LOCATION

Knutsford is an old market town rich in heritage and brimming with a variety of architectural features, particularly those built in an Italianate Tuscan style by the famous local architect, Richard Harding Watt. Linked by a web of ginnels, cobbles and courtyards, the two main streets are home to a variety of shops ranging from boutiques to large outlets including Waitrose, Booths, Boots and Aldi. Evenings in Knutsford are lively with wine bars, pubs and restaurants catering for most tastes. Knutsford borders some of Cheshire's most beautiful countryside and has the famous Tatton Park Country Estate on its doorstep. There is a Leisure Centre, private sports clubs and notable golf courses close by. Excellent education facilities cater for children in both the state and private sectors. The rail station lies on the Chester to Manchester line and Manchester Airport along with nearby connections to the M6 and M56 makes commuting easy.

TENURE

Freehold

SERVICES (NOT TESTED)

All mains services have not been tested and you are advised to make your own enquiries and/or inspections.

LOCAL AUTHORITY

Cheshire East Council Tax Band: TBC

ENERGY PERFORMANCE RATING

B

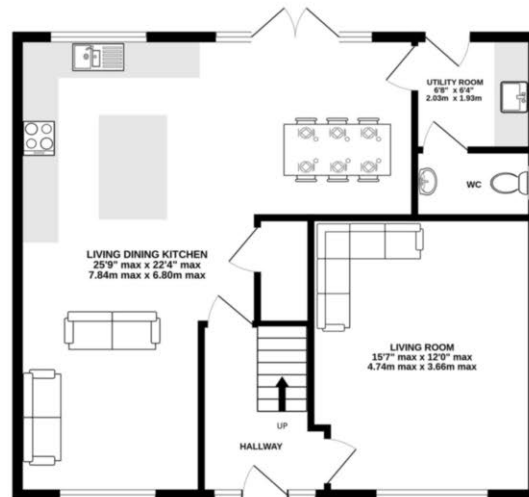
TOTAL FLOOR AREA

1491 SQFT approx

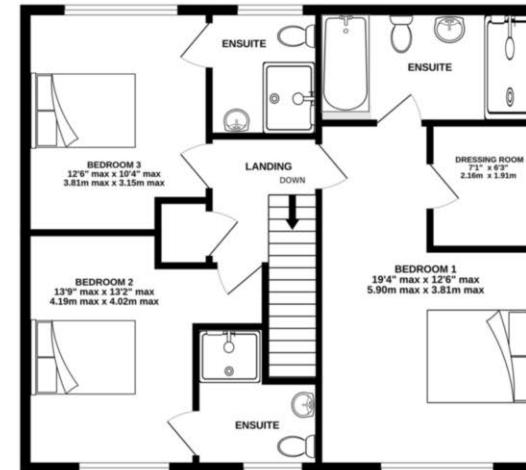
VIEWINGS

Viewing strictly by appointment through the Agents.

GROUND FLOOR
746 sq.ft. (69.3 sq.m.) approx.



1ST FLOOR
746 sq.ft. (69.3 sq.m.) approx.



TOTAL FLOOR AREA: 1491 sq.ft. (138.5 sq.m.) approx.
Measurements are approximate. Not to scale. Illustrative purposes only
Made with Metropix ©2025

NOTICE Gascoigne Halman for themselves and for the vendors or lessors of this property whose agents they are give notice that: (i) the particulars are set out as a general outline only for the guidance of intending purchasers or lessees, and do not constitute, nor constitute part of, an offer or contract; (ii) all descriptions, dimensions, references to condition and necessary permissions for use and occupation, and other details are given in good faith and are believed to be correct but any intending purchasers or tenants should not rely on them as statements or representations of fact but must satisfy themselves by inspection or otherwise as to the correctness of each of them; (iii) no person in the employment of Gascoigne Halman has any authority to make or give any representation or warranty whatever in relation to this property.

KNUTSFORD OFFICE

01565 750 900

Knutsford@gascoignehalman.co.uk

26 Princess Street, Knutsford, WA16 9BU

**GASCOIGNE
HALMAN**