



**GASCOIGNE
HALMAN**

LONDON ROAD, NORTHWICH

THE AREAS LEADING ESTATE AGENT

A well-presented and deceptively spacious 3-storey period terrace home with fabulous larger than average rear garden and patio. Occupying a convenient central location and part of one of the towns most recognised row of cottages, this attractive property is steeped in history and originally formed part of the Brockhurst Hall Estate.

Accommodation briefly comprises; bright and spacious living room, generous sized open plan dining room with fireplace, and a well-appointed fitted kitchen with access into the rear garden completes the ground floor.

The first floor comprises of two double bedrooms including a principal bedroom with feature window, all served by a family bathroom with 3-piece suite and additional walk-in shower. The loft was converted some years ago to create an additional bedroom with exposed timber beams and large velux window.

Externally the well-stocked larger than average rear garden with patio provides the perfect backdrop to this delightful period terrace.

DIRECTIONS

SAT NAV: CW9 8AQ

LOCATION

Northwich is a traditional market town located in the heart of the Cheshire Plain. It provides an ideal commuter base being near the A49, A556, and M6 and just ten minutes

from junction ten onto the M56 to Chester, North Wales, and also Manchester. In terms of railway stations, there are excellent connections to Chester-Manchester at Northwich and Greenbank and London-Liverpool via Hartford and Acton Bridge. Crewe railway station, with a direct connection to London, is around a thirty-five-minute drive away. The subject property is also within a 45-minute drive of Liverpool and Manchester International Airports and the fast-developing MediaCity UK at Salford.

TENURE

Freehold

SERVICES (NOT TESTED)

Main services are connected but have not been tested and you are advised to make your own enquiries and/or inspections.

LOCAL AUTHORITY

Cheshire West & Chester Tax Council Band: C

ENERGY PERFORMANCE RATING

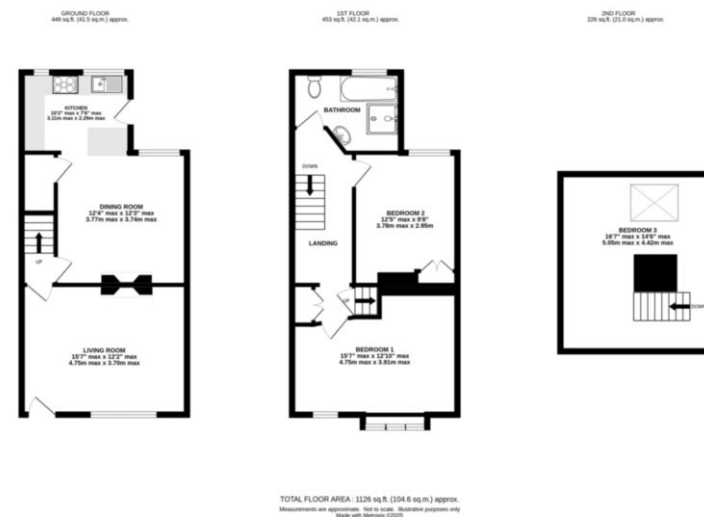
D

TOTAL FLOOR AREA

1126 SQFT approx

VIEWINGS

Viewing strictly by appointment through the Agents.



KNUTSFORD OFFICE

01565 750 900

Knutsford@gascoignehalman.co.uk

26 Princess Street, Knutsford, WA16 9BU

**GASCOIGNE
HALMAN**

NOTICE Gascoigne Halman for themselves and for the vendors or lessors of this property whose agents they are give notice that: (i) the particulars are set out as a general outline only for the guidance of intending purchasers or lessees, and do not constitute, nor constitute part of, an offer or contract; (ii) all descriptions, dimensions, references to condition and necessary permissions for use and occupation, and other details are given in good faith and are believed to be correct but any intending purchasers or tenants should not rely on them as statements or representations of fact but must satisfy themselves by inspection or otherwise as to the correctness of each of them; (iii) no person in the employment of Gascoigne Halman has any authority to make or give any representation or warranty whatever in relation to this property.