



GASCOIGNE HALMAN

BEECHWOOD, TABLEY ROAD, KNUTSFORD

THE AREAS LEADING ESTATE AGENT

NO CHAIN! A well-presented first-floor apartment enjoying fabulous views over The Heath in the ever-popular Beechwood development. This popular later living development is for the over 60's, and lies within a short flat walk of Knutsford Town Centre.

Situated in the centre of Knutsford Town within a beautifully flat walk to local shops and amenities. The apartment is situated on the first floor overlooking The Heath and accessed by a serviced elevator. The accommodation briefly comprises of; a large hallway that could be used as a study area, a spacious living/dining room, and a kitchen, unlike other apartments benefits from a window. Double bedroom and Shower room. The development has a useful communal living room, laundry room, En-suite Guest bedroom and extremely well kept landscaped gardens.

DIRECTIONS

WA16 0PQ

LOCATION

Knutsford is an old market town rich in heritage and brimming with a variety of architectural features, particularly those built in an Italianate Tuscan style by the famous local architect, Richard Harding Watt. Linked by a web of ginnels, cobbles and courtyards, the two main streets are home to a variety of shops ranging from boutiques to large outlets including Waitrose, Booths, Boots and Aldi. Evenings in Knutsford are lively with wine bars, pubs and restaurants catering for most tastes. Knutsford

borders some of Cheshire's most beautiful countryside and has the famous Tatton Park Country Estate on its doorstep. There is a Leisure Centre, private sports clubs and notable golf courses close by. Excellent education facilities cater for children in both the state and private sectors. The rail station lies on the Chester to Manchester line and Manchester Airport along with nearby connections to the M6 and M56 makes commuting easy.

TENURE

Leasehold. 125 year lease with 85 years remaining. Ground Rent £67 pa. Service Charge £283.89 per month.

SERVICES (NOT TESTED)

Mains water and electricity are connected but services have not been tested and you are advised to make your own enquiries and/or inspections.

LOCAL AUTHORITY

Cheshire East Council Tax Band: B

ENERGY PERFORMANCE RATING

Rating: C

VIEWINGS

Viewing strictly by appointment through the Agents.

KNUTSFORD OFFICE

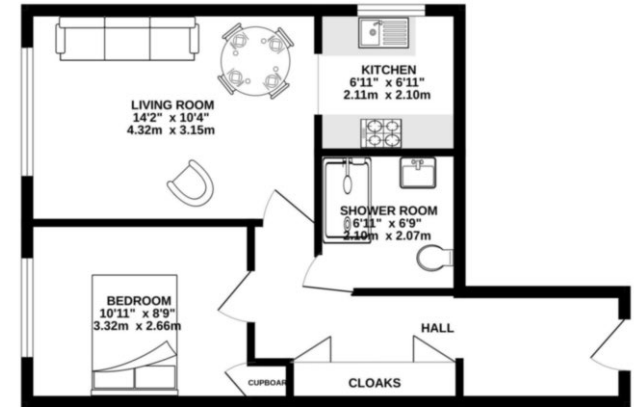
01565 750 900

Knutsford@gascoignehalman.co.uk

26 Princess Street, Knutsford, WA16 6BU

**GASCOIGNE
HALMAN**

GROUND FLOOR
444 sq.ft. (41.2 sq.m.) approx.



TOTAL FLOOR AREA: 444 sq.ft. (41.2 sq.m.) approx.
While every attempt has been made to ensure the accuracy of the description contained here, measurements of plots, boundaries, areas and any other details are approximate and no responsibility is taken for any error, omission or misstatement. This plan is for illustrative purposes only and should be used as such by any prospective purchaser. The services, systems and appliances shown here are not intended and no guarantee as to their operability or efficiency can be given.
Marked with reference (C123)

NOTICE Gascoigne Halman for themselves and for the vendors or lessors of this property whose agents they are give notice that: (i) the particulars are set out as a general outline only for the guidance of intending purchasers or lessees, and do not constitute, nor constitute part of, an offer or contract; (ii) all descriptions, dimensions, references to condition and necessary permissions for use and occupation, and other details are given in good faith and are believed to be correct but any intending purchasers or tenants should not rely on them as statements or representations of fact but must satisfy themselves by inspection or otherwise as to the correctness of each of them; (iii) no person in the employment of Gascoigne Halman has any authority to make or give any representation or warranty whatever in relation to this property.