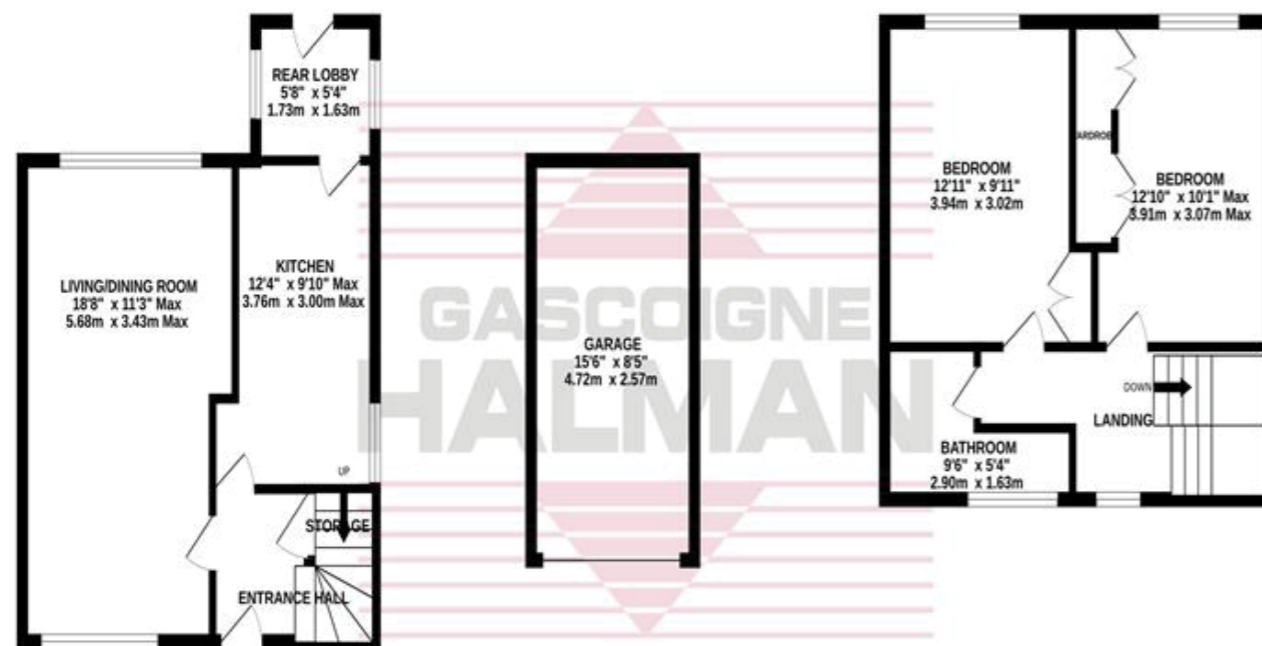


21 TARVIN ROAD
 Cheadle
£250,000

GROUND FLOOR
 504 sq.ft. (46.8 sq.m.) approx.

1ST FLOOR
 368 sq.ft. (34.2 sq.m.) approx.



TOTAL FLOOR AREA: 872 sq.ft. (81.0 sq.m.) approx.

Whilst every attempt has been made to ensure the accuracy of the floorplan contained here, measurements of doors, windows, rooms and any other items are approximate and no responsibility is taken for any error, omission or mis-statement. This plan is for illustrative purposes only and should be used as such by any prospective purchaser. The services, systems and appliances shown have not been tested and no guarantee as to their operability or efficiency can be given.
 Made with Metropix ©2023



NOTICE
 Gascoigne Halman for themselves and for the vendors or lessors of this property whose agents they are give notice that: (i) the particulars are set out as a general outline only for the guidance of intending purchasers or lessees, and do not constitute, nor constitute part of, an offer or contract; (ii) all descriptions, dimensions, references to condition and necessary permissions for use and occupation, and other details are given in good faith and are believed to be correct but any intending purchasers or tenants should not rely on them as statements or representations of fact but must satisfy themselves by inspection or otherwise as to the correctness of each of them; (iii) no person in the employment of Gascoigne Halman has any authority to make or give any representation or warranty whatever in relation to this property.

THE AREAS LEADING ESTATE AGENCY

A STYLISH END TERRACE home boasting a large CORNER PLOT, with large living dining room, modern re-fitted kitchen, TWO DOUBLE BEDROOMS, whilst being conveniently located close to CHEADLE VILLAGE and it's local amenities.

Cheadle
 91, High Street, CHEADLE SK8 1AA
 0161 428 1118 cheadle@gascoignehalman.co.uk

gascoignehalman.co.uk



GASCOIGNE HALMAN

- An Attractive End Terrace Home
- Stylish and Spacious Accommodation Throughout
- Large Living/Dining Room With Feature Fireplace
- Modern Re-fitted Kitchen With Dining Area

- Two Double Bedrooms Both With Fitted Wardrobes
- Stylish Re-fitted Bathroom
- Private Rear Garden With Useful Detached Garage
- Benefitting From Off Road Parking

£250,000

21 TARVIN ROAD

Cheadle



DESCRIPTION

A stylish end terrace home offering spacious accommodation throughout including large living dining room, modern dining kitchen, two double bedrooms, whilst enjoying a private rear garden and convenient location close to Cheadle Village.

The attractive home begins with welcoming entrance hall with useful storage cupboard, generous living dining room with feature fireplace, stylish dining kitchen with modern appliances and access to the useful rear lobby which leads to the garden.

To the first floor there are two double bedrooms, the second benefitting from fitted wardrobes and a stylish re-fitted bathroom with three piece suite.

Externally the home has a delightful private rear garden with both flagged and lawned areas and a useful detached garage. To the front the property enjoys a delightful lawned area and off road parking.

LOCATION

Cheadle offers a good selection of shops, pubs and restaurants and provides excellent educational facilities for children of all ages. Cheadle Royal Shopping Centre is close by together with access to the A34 by-pass which leads to Handforth Dean and Stanley Green Retail Park. Motorway connections to the M60 are available at both ends of the village, Manchester International Airport is easily accessible, whilst railway stations are situated at nearby Gatley and Cheadle Hulme.

DIRECTIONS
SK8 2LL.

TENURE

Freehold.

SERVICES (NOT TESTED)

Services have not been tested and you are advised to make your own enquiries and/or inspections.

LOCAL AUTHORITY

Stockport MBC.

VIEWING

Viewing strictly by appointment through the Agents.

TWENTY NETWORKED OFFICES THROUGHOUT CHESHIRE, SOUTH MANCHESTER & THE HIGH PEAK



gascoignealman.co.uk

GASCOIGNE HALMAN