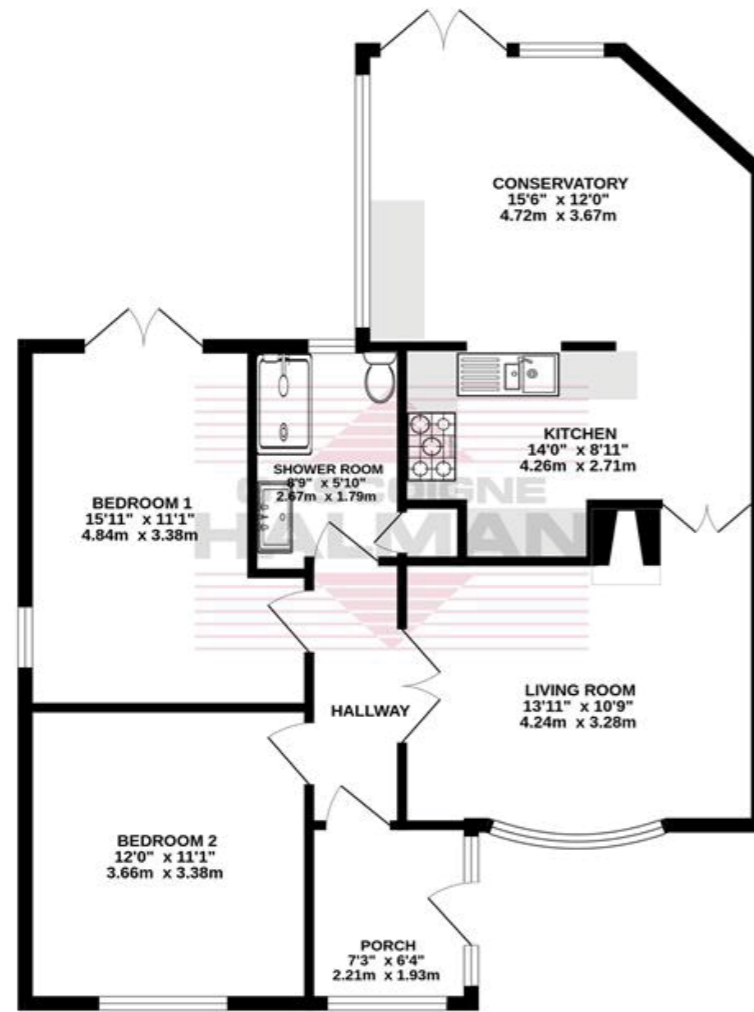


25 SILVERDALE ROAD

Gatley

£425,000

GROUND FLOOR
852 sq.ft. (79.1 sq.m.) approx.



TOTAL FLOOR AREA: 852 sq.ft. (79.1 sq.m.) approx.

Whilst every attempt has been made to ensure the accuracy of the floorplan contained here, measurements of doors, windows, rooms and any other items are approximate and no responsibility is taken for any error, omission or mis-statement. This plan is for illustrative purposes only and should be used as such by any prospective purchaser. The services, systems and appliances shown have not been tested and no guarantee as to their operability or efficiency can be given.
Made with Metropix ©2024



NOTICE
Gascoigne Halman for themselves and for the vendors or lessors of this property whose agents they are give notice that: (i) the particulars are set out as a general outline only for the guidance of intending purchasers or lessees, and do not constitute, nor constitute part of, an offer or contract; (ii) all descriptions, dimensions, references to condition and necessary permissions for use and occupation, and other details are given in good faith and are believed to be correct but any intending purchasers or tenants should not rely on them as statements or representations of fact but must satisfy themselves by inspection or otherwise as to the correctness of each of them; (iii) no person in the employment of Gascoigne Halman has any authority to make or give any representation or warranty whatever in relation to this property.

THE AREAS LEADING ESTATE AGENCY

Cheadle

91, High Street, CHEADLE SK8 1AA

0161 428 1118 cheadle@gascoignehalman.co.uk

gascoignehalman.co.uk



Impeccably presented, this detached bungalow offers two double bedrooms, a welcoming dining-kitchen & conservatory with a semi-open aspect, a beautifully maintained rear garden & patio, a spacious block paved driveway & useful detached garage. Conveniently located near to Gatley Village, local shops & train station.

GASCOIGNE HALMAN

- Immaculately presented throughout.
- Superb, sociable kitchen-diner & conservatory.
- Two double bedrooms

- Generous block paved driveway & useful detached garage.
- Beautifully presented front & rear gardens.
- Conveniently positioned for Gatley Village & station.

£425,000

25 SILVERDALE ROAD

Gatley



DESCRIPTION

Situated in the popular residential location of Gatley is this wonderfully presented detached bungalow that has been lovingly restored & designed. The property has undertaken a significant course of improvements over the years making this property ideal for anyone wanting move in ready condition. In brief the property offers a bright and welcoming entrance porch & hallway with designer radiator and double doors to a beautifully decorated living room complete with feature fireplace. Double doors lead on to a well equipped integrated kitchen with high quality units, low profile worktops & breakfast bar.

It offers a semi-open aspect to a wonderful, sociable conservatory that overlooks the gardens to the rear. The property offers a modern fitted shower room and two well-proportioned double bedrooms. The master bedrooms also features French patio doors to the patio area. Other features include a generous, block paved driveway, a useful detached garage complete with power & electric door & and beautifully maintained gardens to both the front and rear.

LOCATION

Gatley offers a good selection of shops, pubs and restaurants and provides excellent educational facilities for children of all ages. Cheadle Royal shopping centre, Handforth Dean and Stanley Green retail parks are within easy reach as is the A34 bypass and motorway access. Gatley railway station provides a direct link to Manchester City Centre and Manchester International Airport which is also nearby.

DIRECTIONS

SK8 4QS

TENURE

Freehold

SERVICES (NOT TESTED)

Services have not been tested and you are advised to make your own enquiries and/or inspections.

LOCAL AUTHORITY

Stockport MBC

VIEWING

Viewing strictly by appointment through the Agents.

TWENTY NETWORKED OFFICES THROUGHOUT CHESHIRE, SOUTH MANCHESTER & THE HIGH PEAK



gascoignealman.co.uk

GASCOIGNE HALMAN