



**GASCOIGNE  
HALMAN**

140, BLOOMSBURY LANE, TIMPERLEY, ALTRINCHAM

---

THE AREAS LEADING ESTATE AGENT





## **140, BLOOMSBURY LANE, TIMPERLEY, ALTRINCHAM**

This wonderful and charming period terrace style home offers well-proportioned accommodation right in the heart of Timperley village! The property boasts two well-proportioned reception rooms, two double bedrooms, AND two bathrooms, making this extremely desirable. Don't miss out on this characterful gem with no onward chain!





Introducing this charming period terrace home located in the highly sought-after Timperley Village. This delightful property boasts a prime location, offering easy access to a range of local amenities, including shops, restaurants, and other conveniences.

As you enter the property, you will be greeted by the warm and inviting atmosphere, which is characteristic of this type of period home. The property features two double bedrooms, providing ample space for a small family or guests. The property also benefits from two bathrooms, ensuring that everyone has the necessary facilities to enjoy a comfortable and convenient lifestyle.

The two reception rooms offer plenty of space for relaxation and entertainment, with the added benefit of a courtyard garden, perfect for alfresco dining or enjoying the sunshine on a warm summer day. The property is also offered with no onward chain, making it an ideal choice for those looking to move quickly.

Overall, this property is a fantastic opportunity to own a characterful period home in a highly desirable location. With its excellent transport links and close proximity to local amenities, this property is sure to impress. Contact us today to arrange a viewing and see for yourself what this wonderful property has to offer.

#### LOCATION

The transformation of Altrincham Town Centre has taken a major step forward, with new proposals set to revitalise the area. The regeneration of the Transport Interchange has improved accessibility both in and out of the town, whilst maintaining excellent connections to wider regions including Manchester City Centre and Manchester Airport. Larger retailers can be found at Altrincham Retail Park just a short drive from the Town Centre and one of the largest shopping centres in Europe. The Trafford Centre is only a few miles away. Timperley village on the other hand meets the needs of its local residents with butchers, bakers, coffee shops and convenience stores. The restoration and refurbishment of the historic Altrincham Market Quarter has given the town a modern edge, providing a new gastro style hub for visitors and locals, alongside the construction of Altrincham General Hospital, a superb, modern health facility for Trafford residents. Trafford is renowned for its excellent educational facilities, priding itself on being home to some of the most reputable primary and secondary schools, whilst a number of parks and recreational areas cater for the needs of families with children of all ages.

#### DIRECTIONS

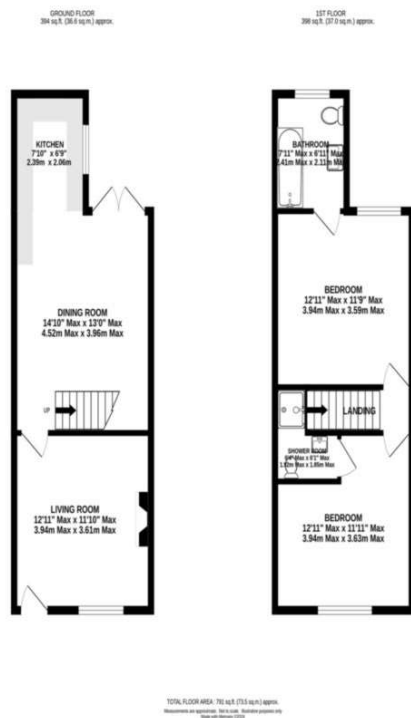
Sat Nav: WA15 6NX

#### TENURE

Freehold

#### LOCAL AUTHORITY

Trafford - Tax Band D



NOTICE Gascoigne Halman for themselves and for the vendors or lessors of this property whose agents they are give notice that: (i) the particulars are set out as a general outline only for the guidance of intending purchasers or lessees, and do not constitute, nor constitute part of, an offer or contract; (ii) all descriptions, dimensions, references to condition and necessary permissions for use and occupation, and other details are given in good faith and are believed to be correct but any intending purchasers or tenants should not rely on them as statements or representations of fact but must satisfy themselves by inspection or otherwise as to the correctness of each of them; (iii) no person in the employment of Gascoigne Halman has any authority to make or give any representation or warranty whatever in relation to this property.

## ALTRINCHAM OFFICE

0161 929 1500

Altrincham@gascoignehalman.co.uk  
26 The Downs, Altrincham, WA15 6NX

**GASCOIGNE  
HALMAN**