

# ELDRIDGE HOUSE

104-108 Hounslow Road TW14 0BY





# CONTENTS

4 - 5	Welcome To Feltham
6 - 7	Aerial View
8 - 9	Feltham Life
10 - 11	Feltham Community
12 - 13	Feltham Connections
14 - 15	Feltham Rental Yields
16 - 17	Location Map
18 - 19	Development Plan
20 -21	Elevations
22 - 35	Floor Plans
36 - 68	Flat Plans Specifications
69 - 69	How To Find Us
69 - 69	Contact Us
70	

# WELCOME TO FELTHAM

Feltham is a town in West London, England, 13 miles (21 km) from Charing Cross. Historically part of Middlesex, it became part of the London Borough of Hounslow in 1965. The parliamentary constituency of Feltham and Heston has been held by Labour Party MPs since 1992

Favored by the finance industry, Feltham is a residential area that is very close to Heathrow Airport, and well-connected to Central London. The area is family-friendly, with affordable property, excellent parks, and good schools.

London Heathrow airport is within easy reach and transport links serve the capi-tal and the wider country.

✈ Heathrow

Terminal 5

Terminals 2&3

Terminal 4

Feltham

to Reading & Windsor

Victoria

Clapham Junction













## FELTHAM LIFE

The town center includes shopping parades and a managed shopping center (The Centre) which provides over 60 stores, 800 homes, a hotel, cafes, restaurants, banks, library, health hub, multi-storey and surface car parks and supermarkets.

Public venues include Feltham Assembly Hall, community rooms in the new library, as well as several residents' association halls and clubs. Springwest Academy and Rivers Academy West London both have excellent sports facilities. These supplement the Hanworth Air Park Leisure Centre and Library, operated by Fusion Leisure on behalf of Hounslow Council. Leisure West a privately developed and managed complex of entertainment and dining facilities including a multiplex cinema, tenpin bowling alley, bingo club and restaurants.

Restaurants and pubs are in abundance in their own right with many 4- and 5-star awards on popular listing sites.



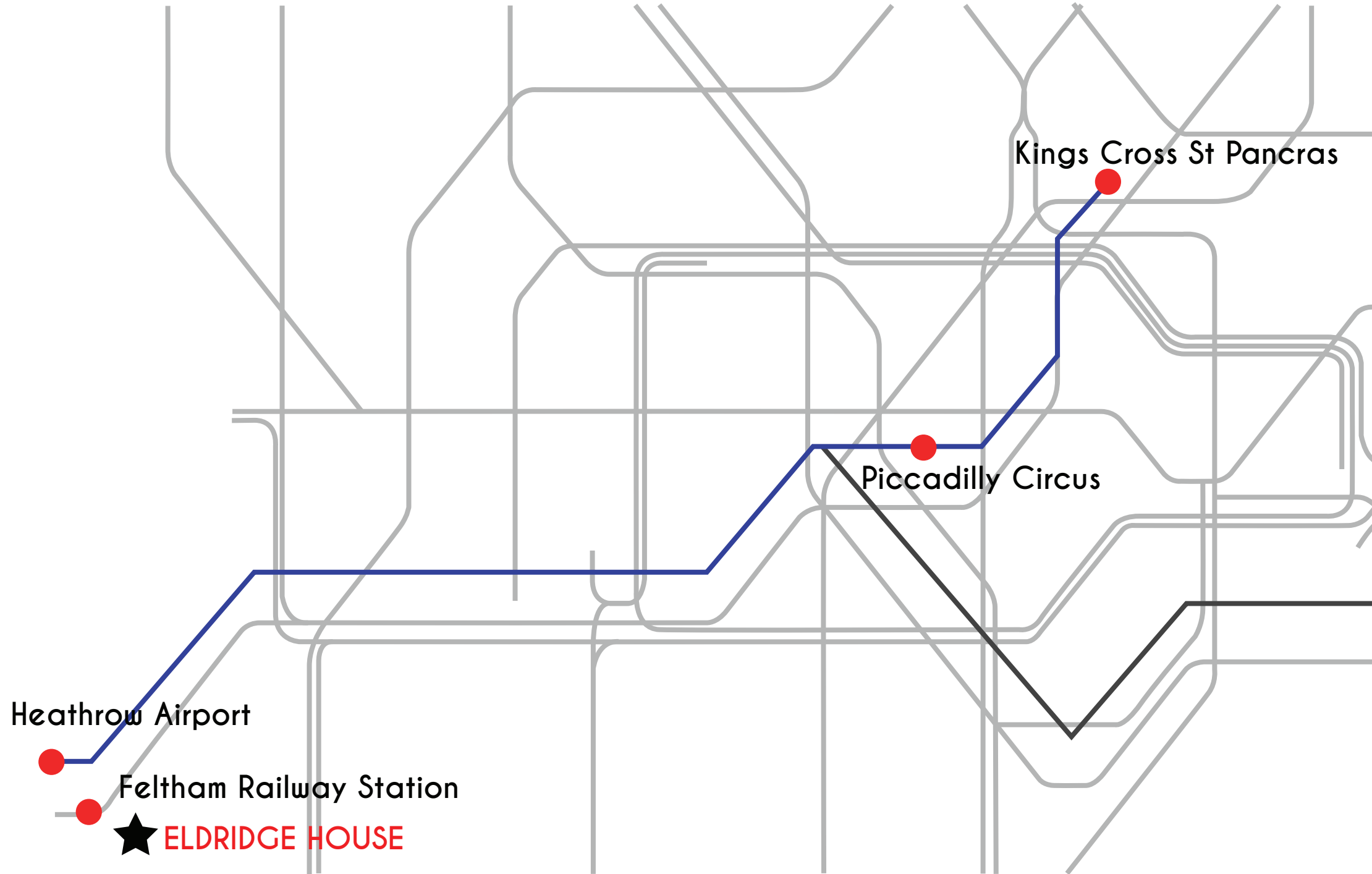
## FELTHAM COMMUNITY

Feltham is a vibrant and multicultural area with a strong local community that is attracting a wide array of new residents.

It also boasts a variety of amenities to support community-led cultural activities, from leisure and education centers, to the nearby The Centre, offering a large number of restaurant and cafes.









## FELTHAM CONNECTIONS

Feltham Train Station provides excellent connections to Reading and central London. The town center is just two and a half miles from Heathrow Airport.

Canary Wharf

### KEY JOURNEY TIMES FROM FELTHAM

To	Journey Time
Heathrow Airport	10 mins
Kings Cross St Pancras	43 mins
Piccadilly Circus	44 mins
Canary Wharf	57 mins

# FELTHAM RENTAL YIELDS

## 1 BEDROOM FLAT

1 Double Bedroom. 1 Bathroom. Open-plan Lounge/Kitchen. Balcony/Patio

**1 Bedroom Flat – 622 sq ft (57.78sqm) in average - £1200\***

The price above is based on the properties completed to specification, with no parking added to them.

Based on an average sale price of £300k, with rent being £1200pcm, the rental yield will be 4.8%

## 2 BEDROOM FLAT

Two Doubles. Two Bathrooms.  
Open-plan Lounge/Kitchen. Balcony/Patio

**2 Bedroom Flat – 848 sq ft (78.78sqm) - £1400\***

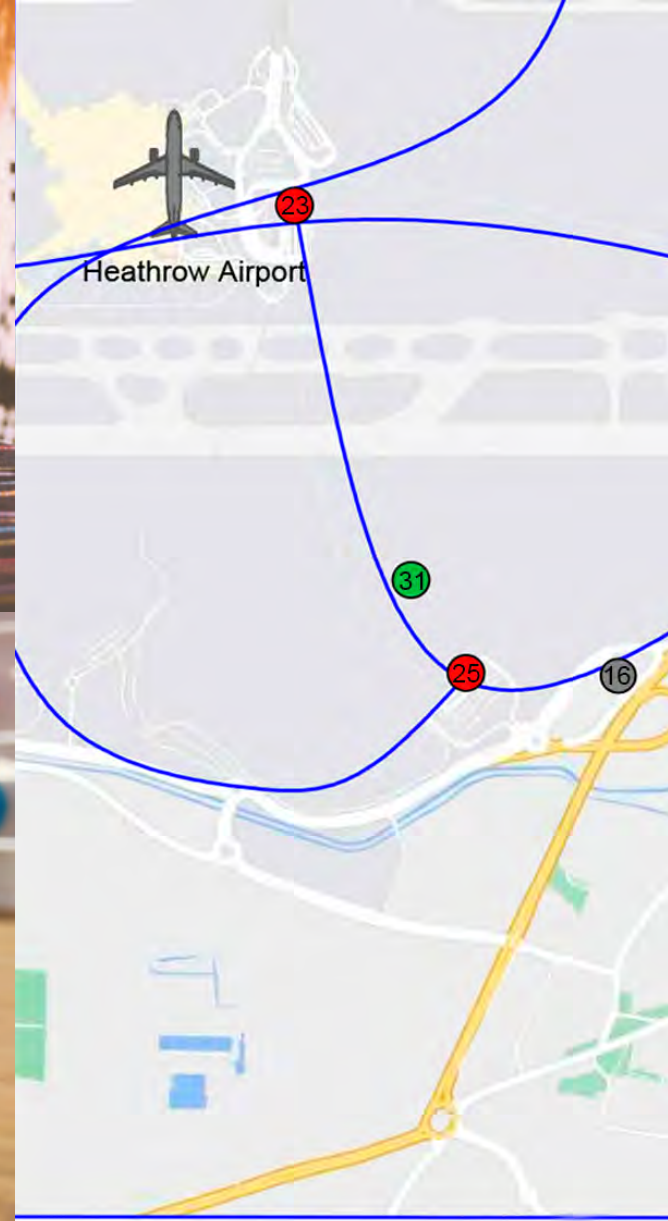
The price above is based on the properties completed to specification, with a car parking space.

Based on an average sale price of £400k, with rent being £1400pcm, the rental yield will be 4.2%

\*All figures are based on sizes and speculation alone. Further inspection is required to concrete prices.







# LOCATION MAP

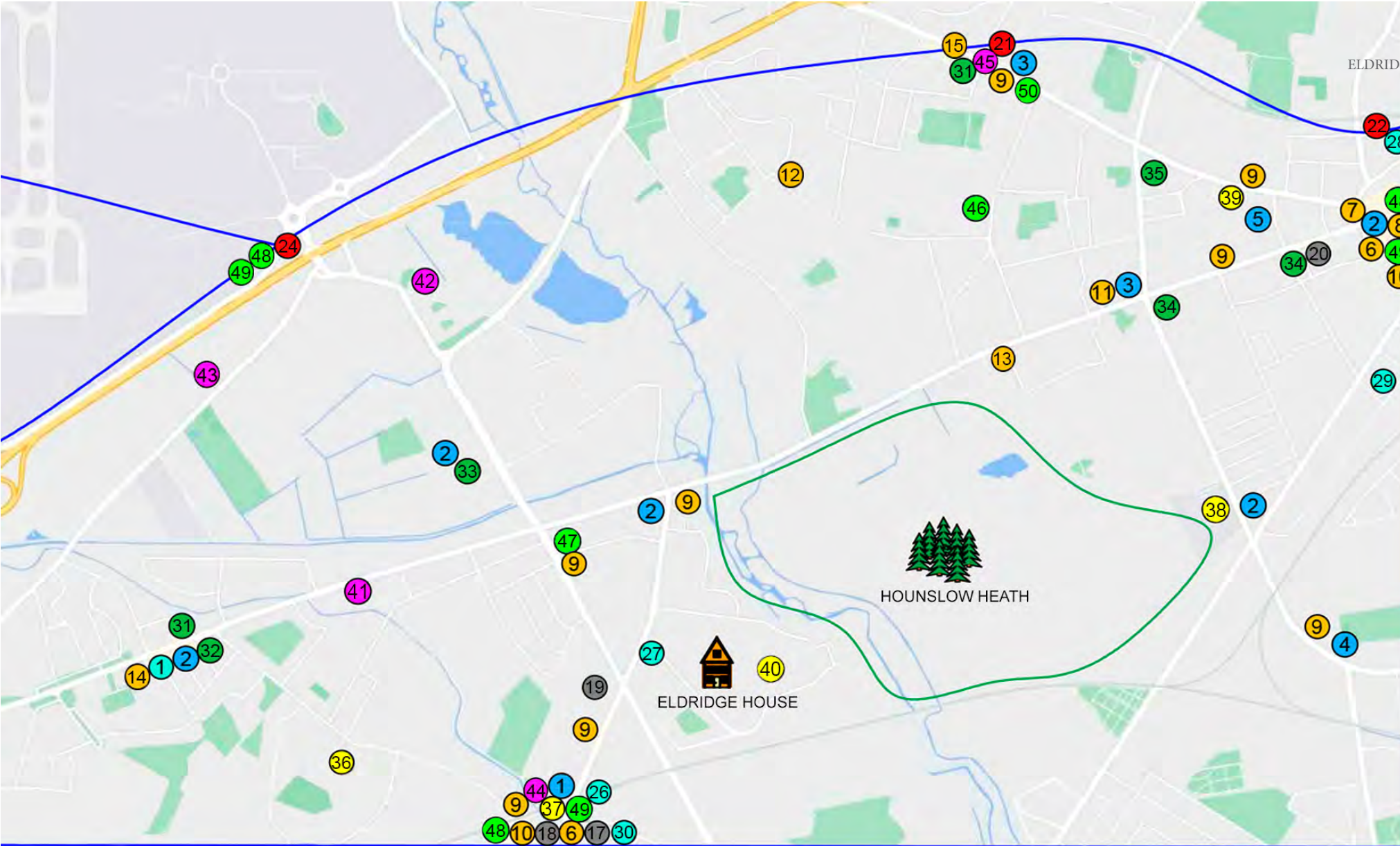
### SHOPPING

- 1 Lidl
- 2 Tesco
- 3 Sainsbury's
- 4 Costcutter
- 5 ALDI

### BANKS \$ POST OFFICE

- 6 Lloyds
- 7 TSB
- 8 HSBC
- 9 ATM
- 10 Santander
- 11 Sainsbury
- 12 Beavers Farm Estate
- 13 Hounslow Heath
- 14 Post office
- 15 Barclays





GYM & LEISURE

- 16 LivingWell Health Club
- 17 The Gym Group
- 18 Anytime Fitness
- 19 Feltham Park Outdoor
- 20 Xercise4Less

TRAVEL

- 21 Hounslow West St.
- 22 Hounslow Central St.
- 23 Heathrow Airoport T. 2-3
- 24 Hatton Cross
- 25 Heathrow Airoport T. 4

RELIGION

- 26 W.Z.O.
- 27 Feltham HIRA Centre
- 28 Holy Trinity Church
- 29 St Stephens Church
- 30 Christ Church Feltham

HEALTH & SAFETY

- 31 Boots Pharmacy
- 32 Edwards & Taylor
- 33 Tesco Pharmacy
- 34 Herbert & Herbert
- 35 Hounslow Medical Centre

EDUCATION

- 36 Small Steps
- 37 Harvard Park
- 38 The Heathland
- 39 Giggles
- 40 Sparrow Farm

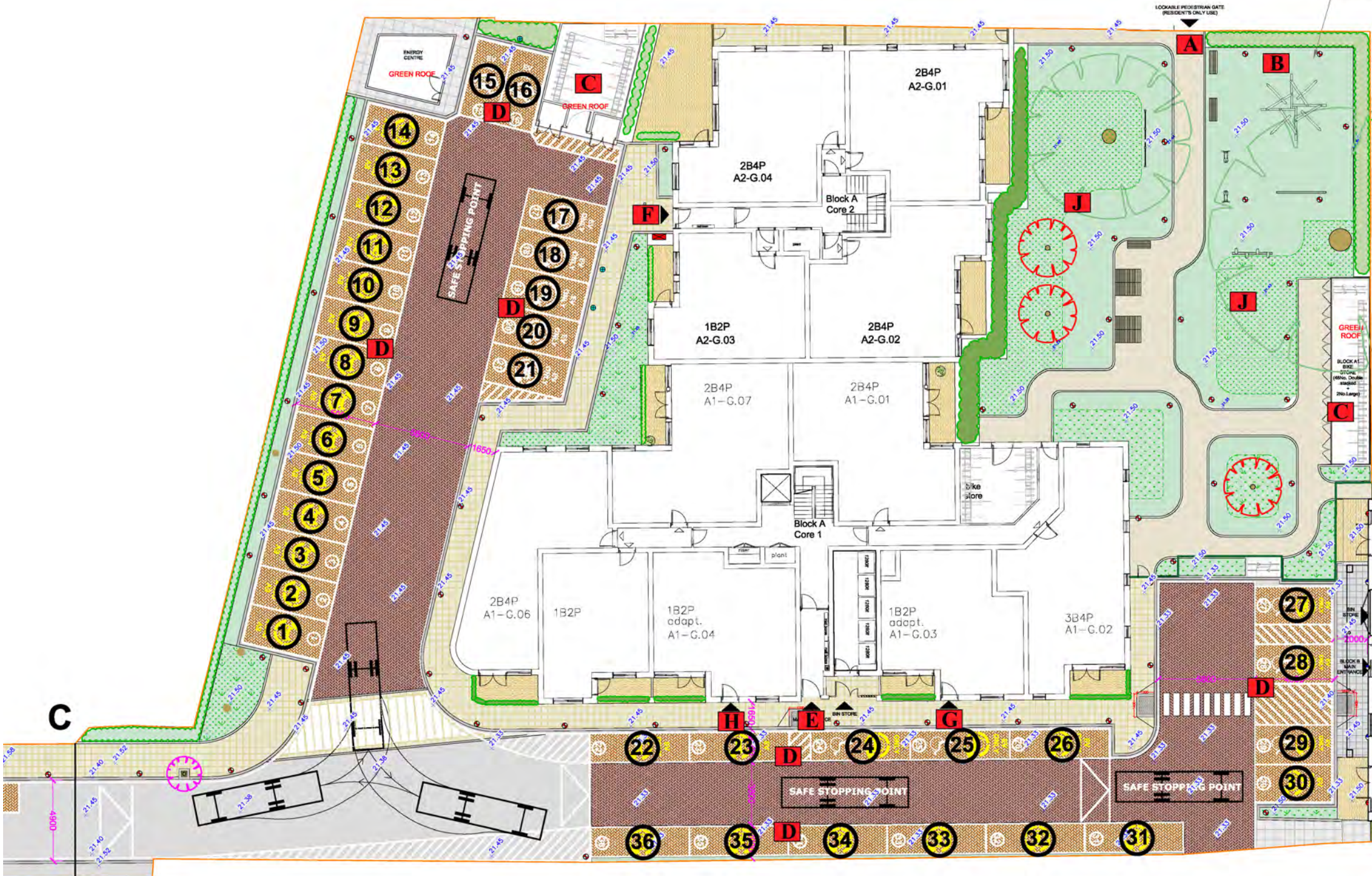
INTERENTAINMENT

- 41 The Beehive Pub
- 42 Green Man Pub
- 43 Duke of Wellington Bar
- 44 The Moon on the Square
- 45 Keg and Cask Pub

FOOD

- 46 Paleta Polish
- 47 Nido's Feltham
- 48 Subway
- 49 McDonald's
- 50 K.F.C





# ELEVATIONS

NORTHEAST ELEVATION (Denham Rd)



SOUTHEAST ELEVATION (Courtyard)



# ELEVATIONS

## SOUTHWEST ELEVATION



## NORTHWEST ELEVATION







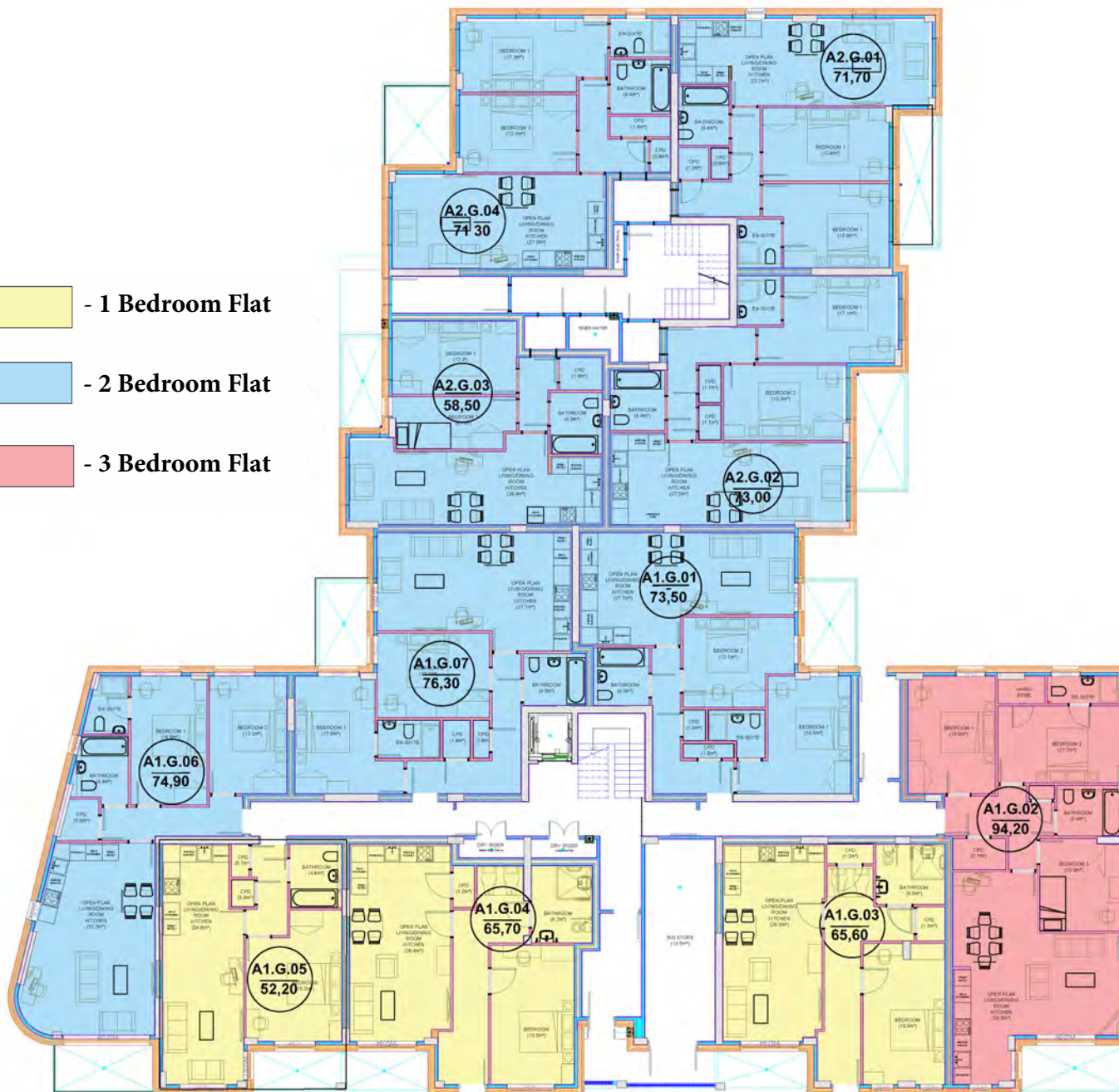




# FLOORPLANS

## GROUND FLOOR - MASTER

- 1 Bedroom Flat
- 2 Bedroom Flat
- 3 Bedroom Flat



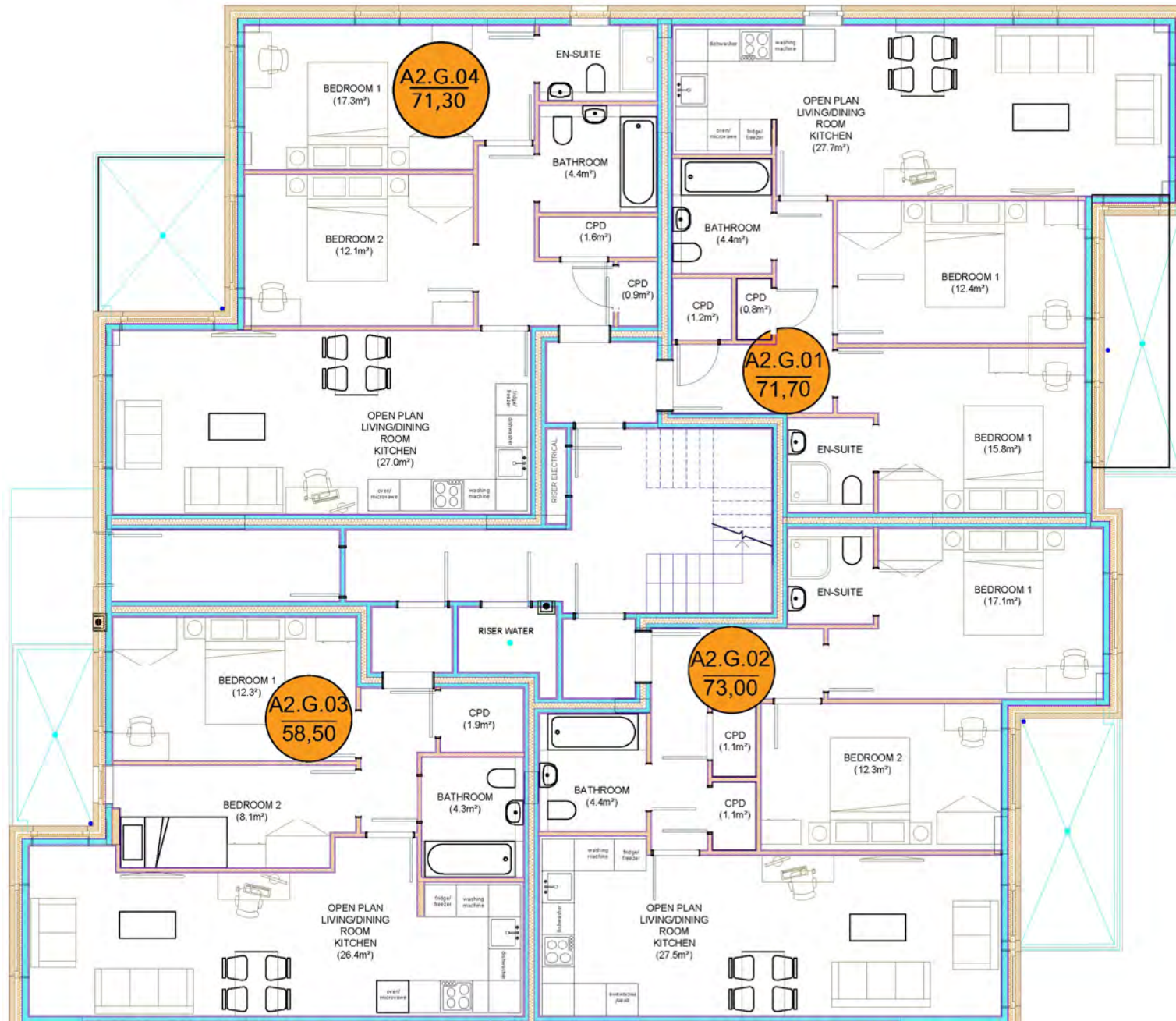
# FLOORPLANS

## GROUND FLOOR - BLOCK A1



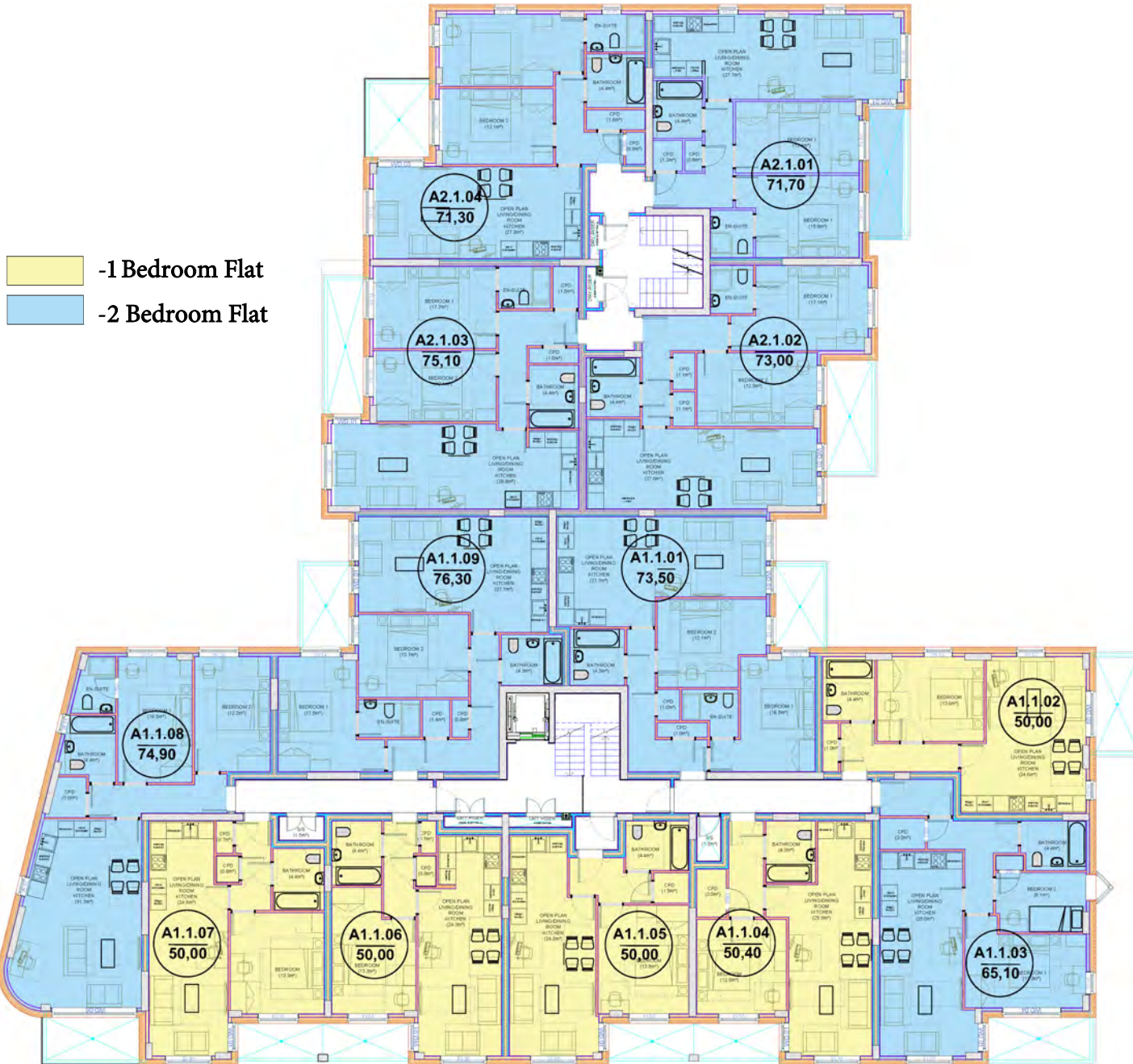
# FLOORPLANS

## GROUND FLOOR - BLOCK A2



# FLOORPLANS

## FIRST FLOOR - MASTER



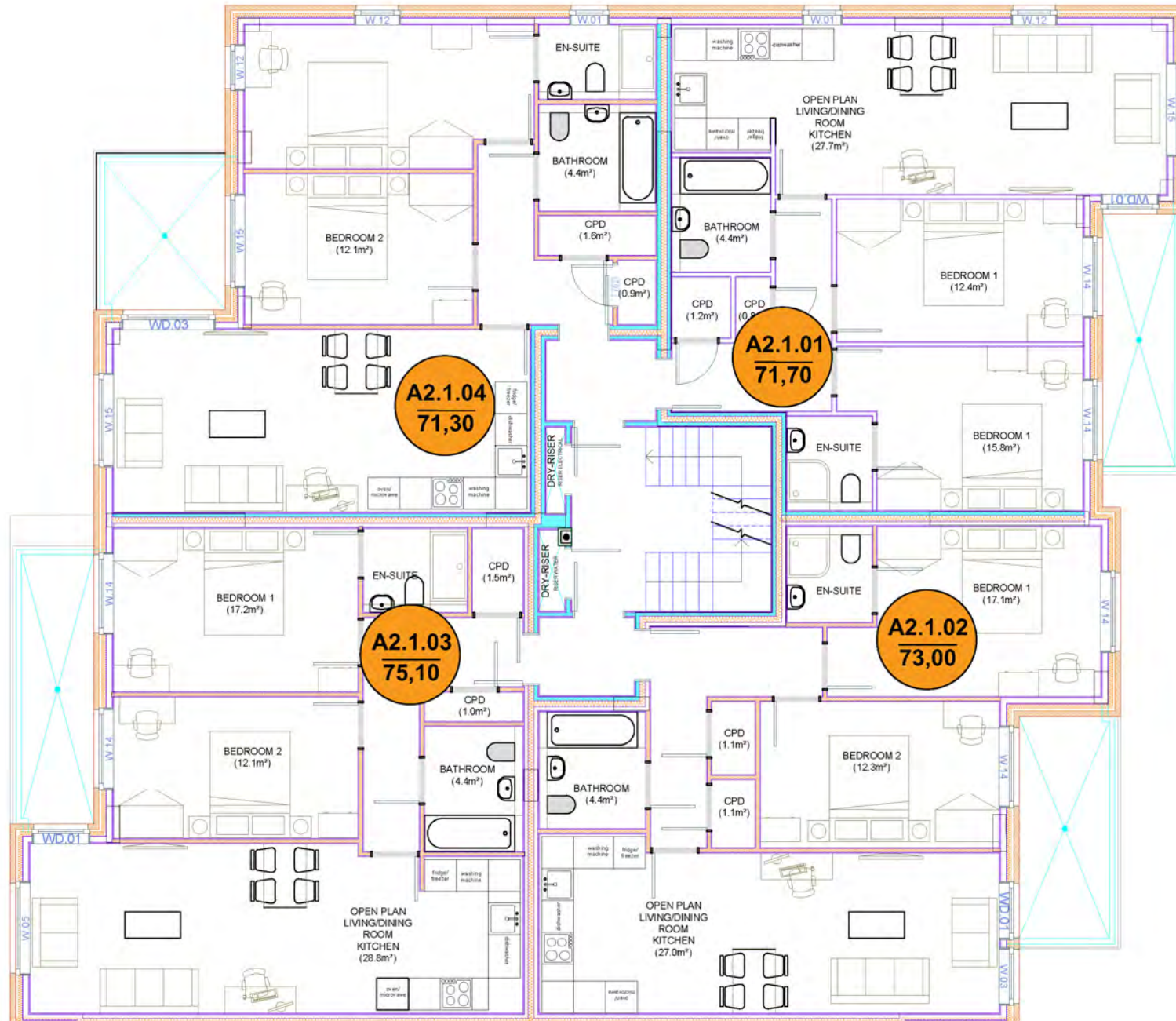
# FLOORPLANS

## FIRST FLOOR - BLOCK A1



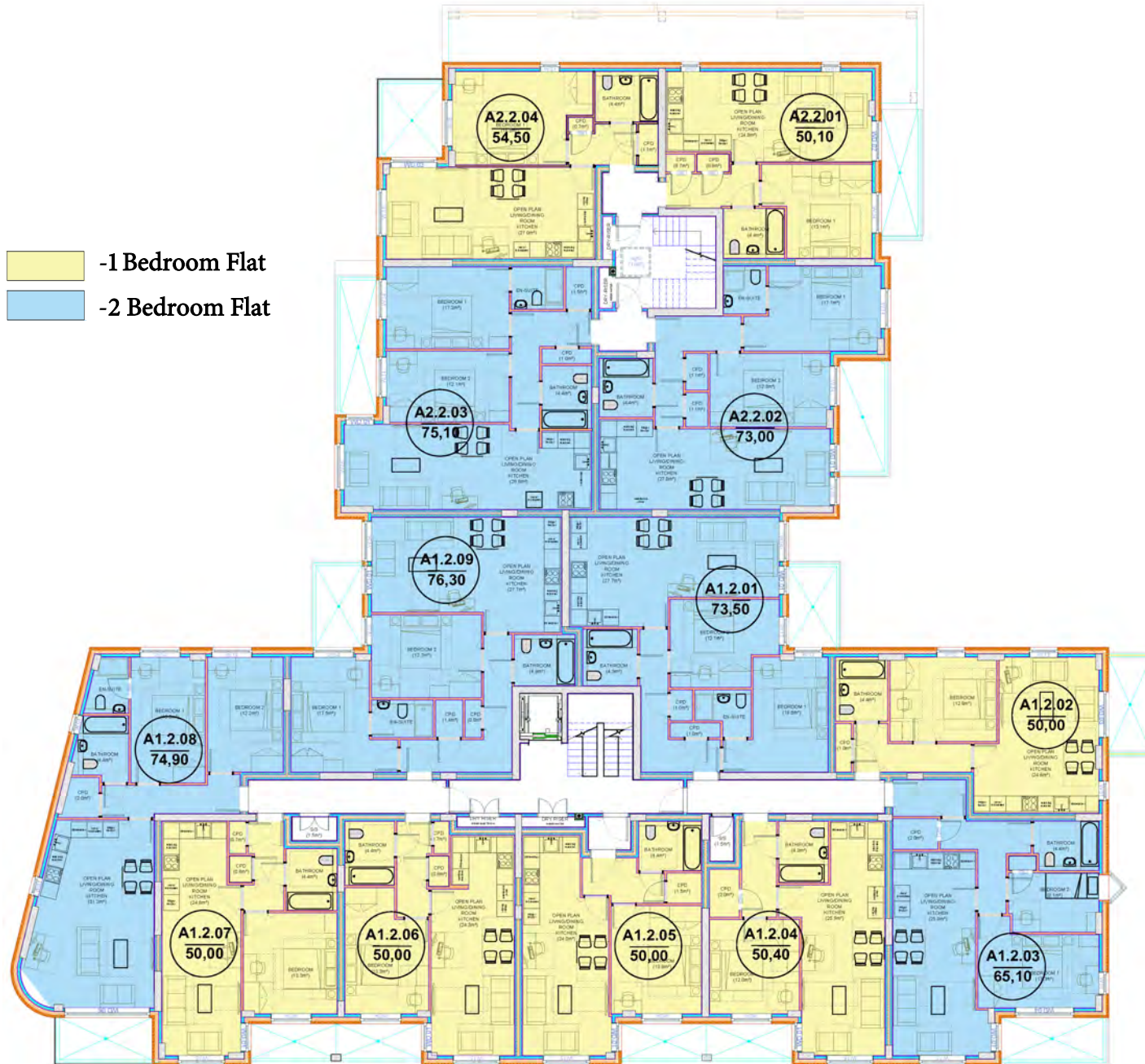
# FLOORPLANS

## FIRST FLOOR - BLOCK A2



# FLOORPLANS

## SECOND FLOOR - MASTER



# FLOORPLANS

## SECOND FLOOR - BLOCK A1





# FLOORPLANS

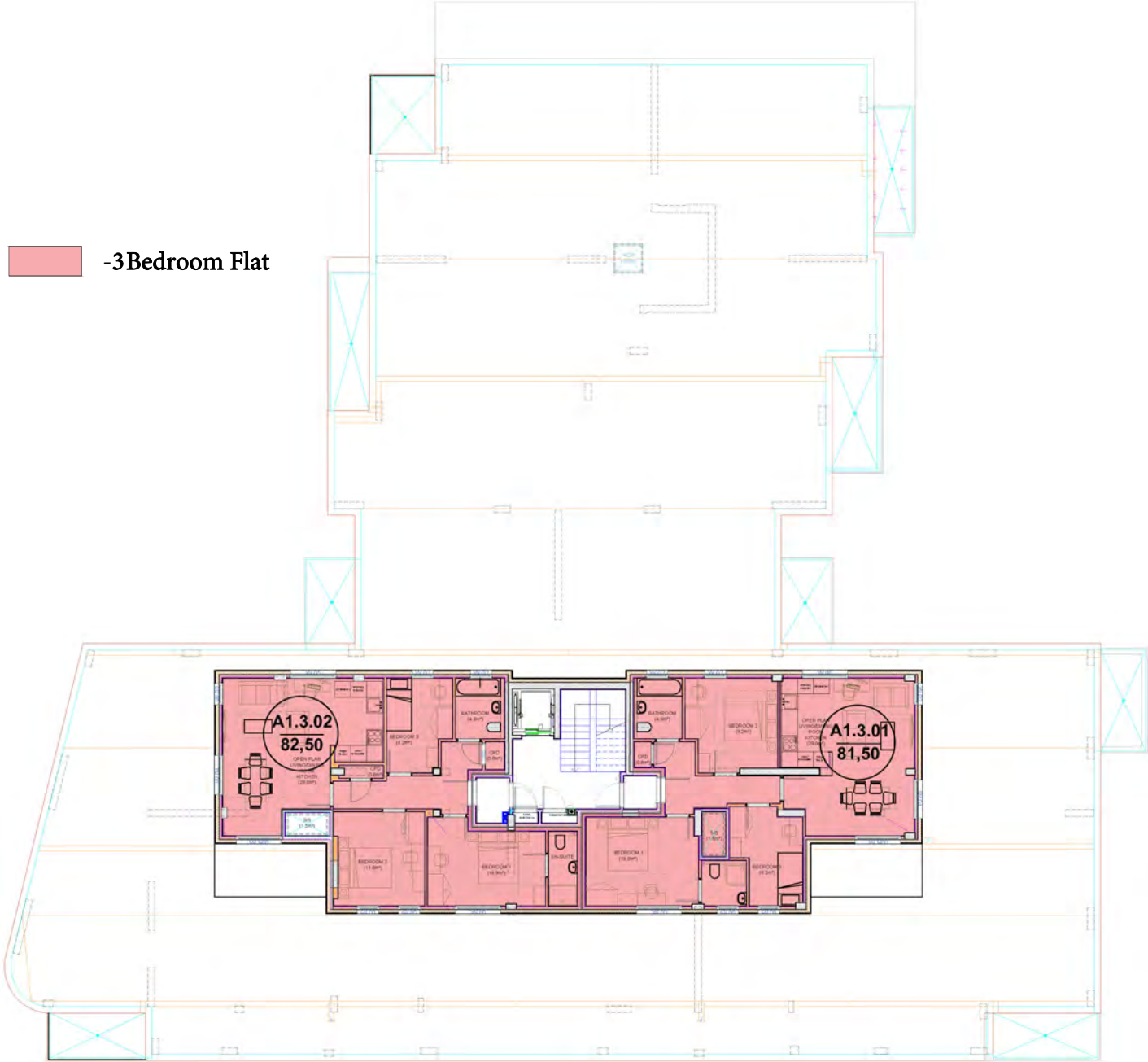
## SECOND FLOOR - BLOCK A2



# FLOORPLANS

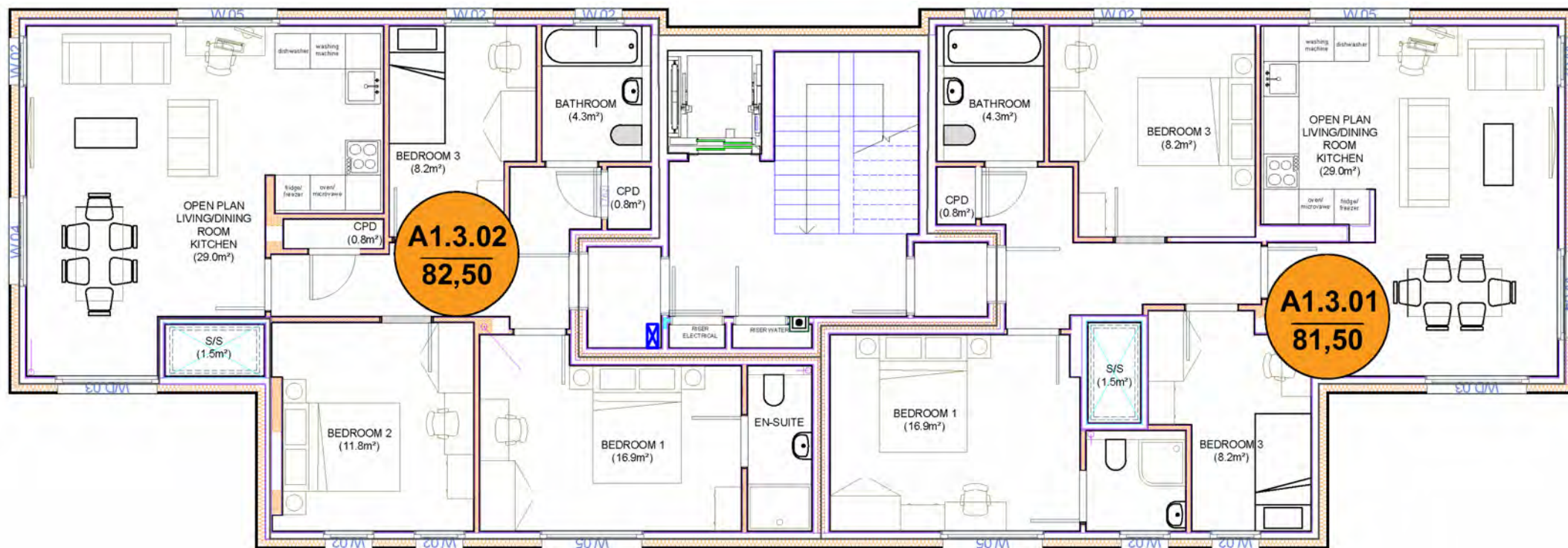
## THIRD FLOOR - MASTER

 -3 Bedroom Flat



# FLOORPLANS

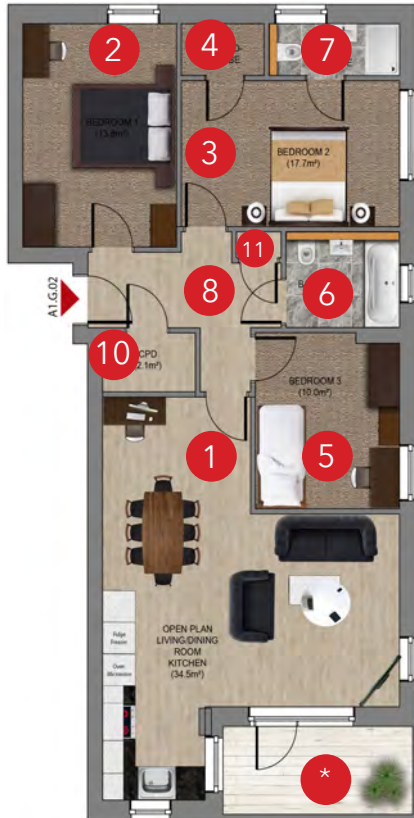
## THIRD FLOOR - BLOCK A1







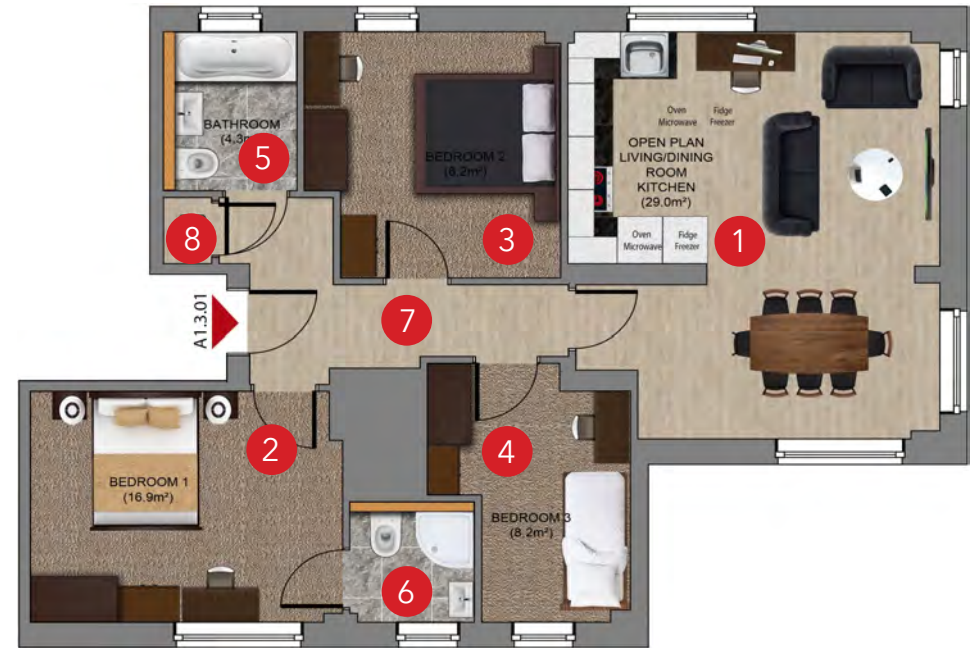
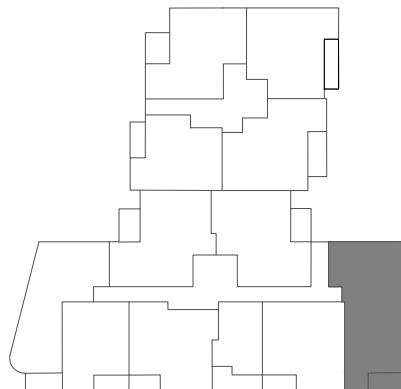
# 3 BEDROOM APARTMENTS



FLAT A1.G.02

- 1. Living room/Kitchen – 34.5 m<sup>2</sup>
- 2. Bedroom 1 – 17.3 m<sup>2</sup>
- 3. Bedroom 2 – 12.8 m<sup>2</sup>
- 4. Ward-robe – 1.7 m<sup>2</sup>
- 5. Bedroom 3 – 10.0 m<sup>2</sup>
- 6. Bathroom – 5.4 m<sup>2</sup>
- 7. En-suite – 2.8 m<sup>2</sup>
- 8. Hall – 7.3 m<sup>2</sup>
- 9. Balcony – 6.4 m<sup>2</sup>
- 10. Storage room 1 – 0.5 m<sup>2</sup>
- 11. Storage room 2 – 2.1 m<sup>2</sup>

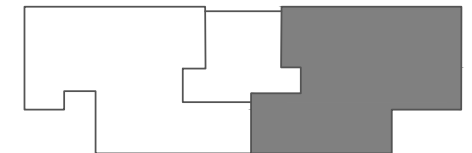
TOTAL AREA - 97.1 m<sup>2</sup>



FLAT A1.3.01

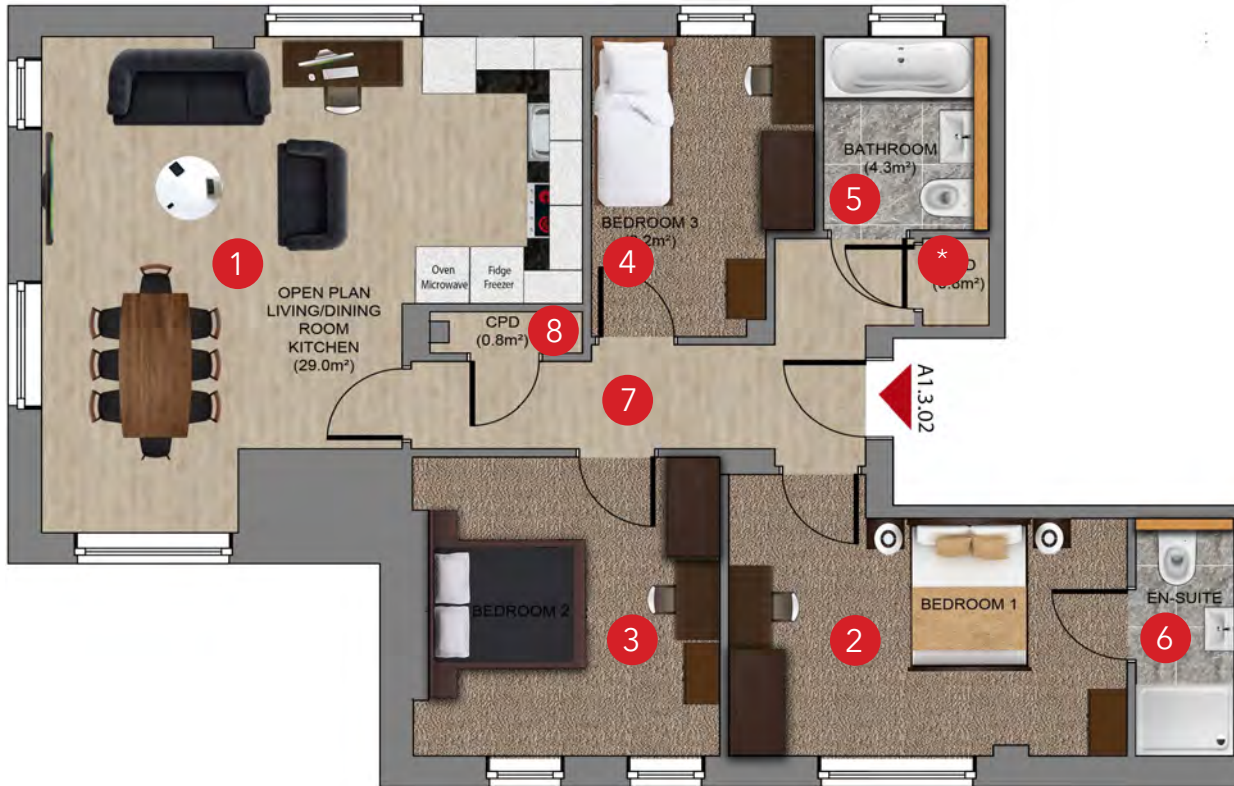
- 1. Living room/Kitchen – 29.0 m<sup>2</sup>
- 2. Bedroom 1 – 16.9 m<sup>2</sup>
- 3. Bedroom 2 – 11.8 m<sup>2</sup>
- 4. Bedroom 3 – 8.2 m<sup>2</sup>
- 5. Bathroom – 4.3 m<sup>2</sup>
- 6. En-suite – 3.1 m<sup>2</sup>
- 7. Hall – 7.2 m<sup>2</sup>
- 8. Storage room 1 – 0.8 m<sup>2</sup>

TOTAL AREA - 81.3 m<sup>2</sup>



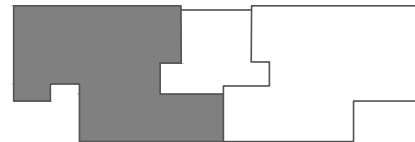


# 3 BEDROOM APARTMENTS



FLAT A1.3.02

1. Living room/Kitchen	-	29.0 m <sup>2</sup>
2. Bedroom 1	-	16.9 m <sup>2</sup>
3. Bedroom 2	-	11.8 m <sup>2</sup>
4. Bedroom 3	-	8.2 m <sup>2</sup>
5. Bathroom	-	4.3 m <sup>2</sup>
6. En-suite	-	3.2 m <sup>2</sup>
7. Hall	-	8.4 m <sup>2</sup>
8. Storage room 1	-	0.8 m <sup>2</sup>
9. Storage room 2	-	0.8 m <sup>2</sup>



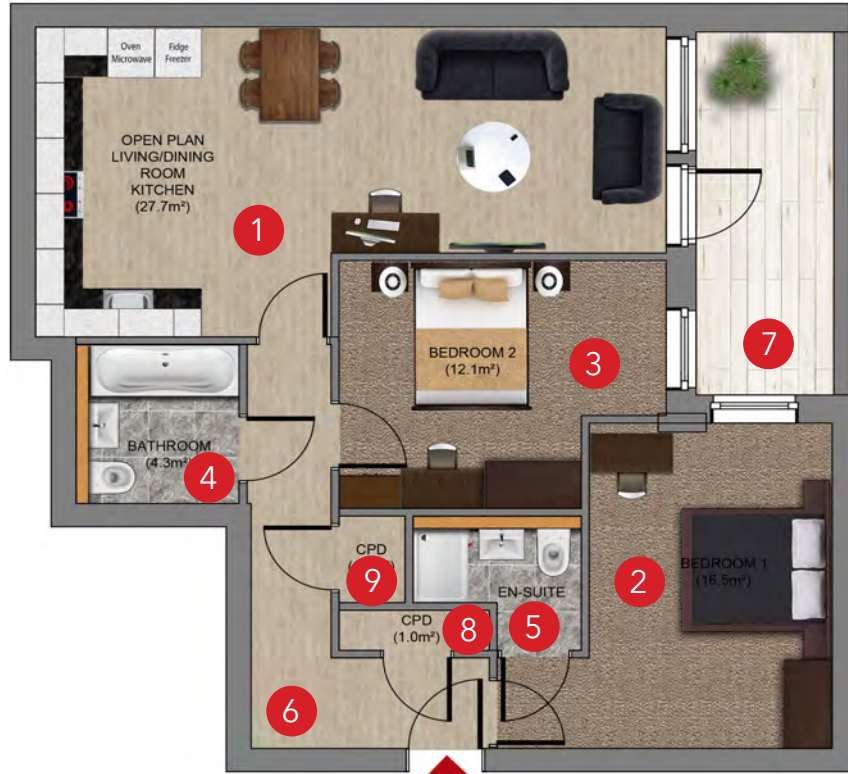
TOTAL AREA - 83.4 m<sup>2</sup>







# 2 BEDROOM APARTMENTS

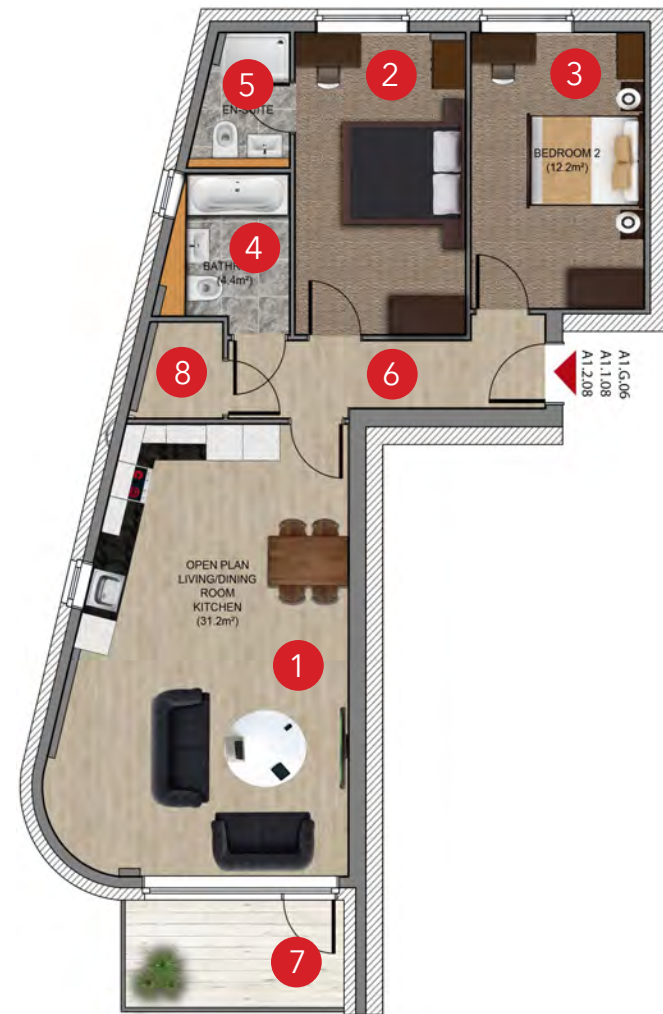
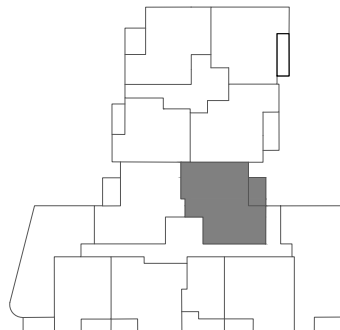


A1.G.01; A1.1.01; A1.2.01;

FLATS A1.G.01 / A1.1.01 / A1.2.01

1. Living room/Kitchen	-	27.7 m <sup>2</sup>
2. Bedroom 1	-	16.5 m <sup>2</sup>
3. Bedroom 2	-	12.1 m <sup>2</sup>
4. Bathroom	-	4.3 m <sup>2</sup>
5. En-suite	-	3.0 m <sup>2</sup>
6. Hall	-	7.8 m <sup>2</sup>
7. Balcony	-	5.7 m <sup>2</sup>
8. Storage room 1	-	1 m <sup>2</sup>
9. Storage room 2	-	1 m <sup>2</sup>

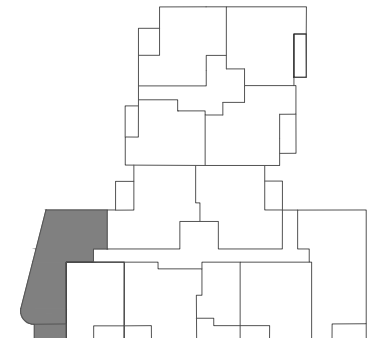
TOTAL AREA - 79.1 m<sup>2</sup>



FLATS A1.G.06 / A1.1.08 / A1.2.08

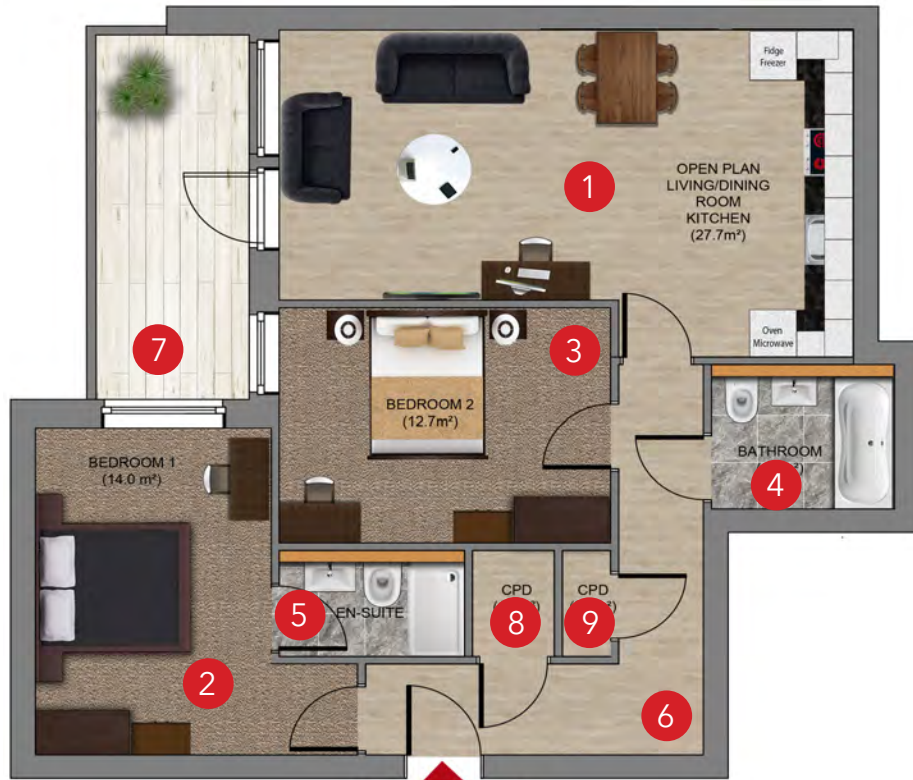
1. Living room/Kitchen	-	81.2 m <sup>2</sup>
2. Bedroom 1	-	16.5 m <sup>2</sup>
3. Bedroom 2	-	12.2 m <sup>2</sup>
4. Bathroom	-	4.4 m <sup>2</sup>
5. En-suite	-	3 m <sup>2</sup>
6. Hall	-	6.2 m <sup>2</sup>
7. Balcony	-	6.1 m <sup>2</sup>
8. Storage room 1	-	2 m <sup>2</sup>

TOTAL AREA - 81.6 m<sup>2</sup>





# 2 BEDROOM APARTMENTS

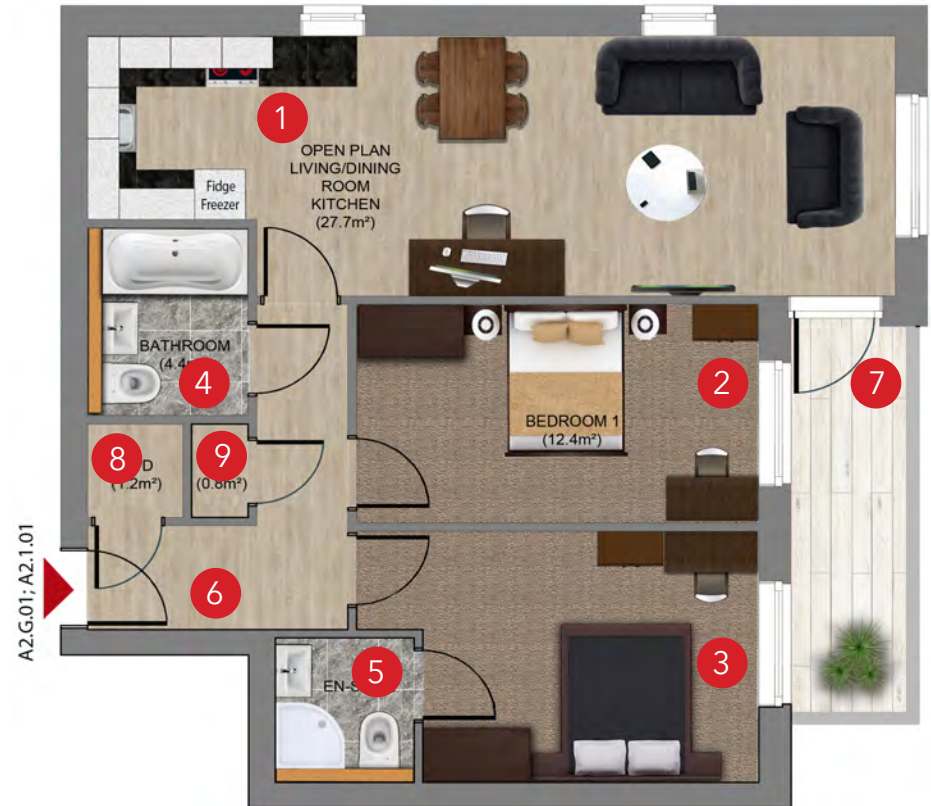
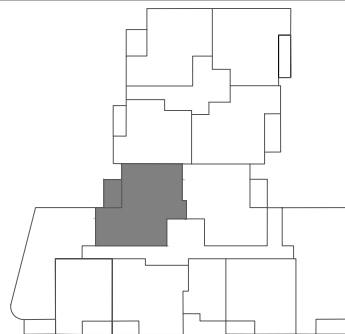


A1.G.07; A1.1.09; A1.2.09

FLATS A1.G.07 / A1.1.09 / A1.2.09

" ŽLiving room/Kitchen	-	27.7 m <sup>2</sup>
# ŽBedroom 1	-	14 m <sup>2</sup>
\$ ŽBedroom 2	-	12.7 m <sup>2</sup>
% ŽBathroom	-	4.3 m <sup>2</sup>
& ŽEn-suite	-	3.2 m <sup>2</sup>
' ŽHall	-	9.3 m <sup>2</sup>
( ŽBalcony	-	6.0 m <sup>2</sup>
) ŽStorage room 1	-	1.4 m <sup>2</sup>
* ŽStorage room 2	-	0.8 m <sup>2</sup>

TOTAL AREA - 79.4 m<sup>2</sup>

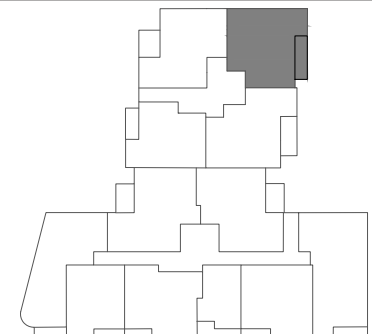


A2.G.01; A2.1.01

FLATS A2.G.01 / A2.1.01

1. Living room/Kitchen	-	27.7 m <sup>2</sup>
2. Bedroom 1	-	12.4 m <sup>2</sup>
3. Bedroom 2	-	15.8 m <sup>2</sup>
4. Bathroom	-	4.4 m <sup>2</sup>
5. En-suite	-	3 m <sup>2</sup>
6. Hall	-	6.7 m <sup>2</sup>
7. Balcony	-	7.1 m <sup>2</sup>
8. Storage room 1	-	1.2 m <sup>2</sup>
9. Storage room 2	-	0.8 m <sup>2</sup>

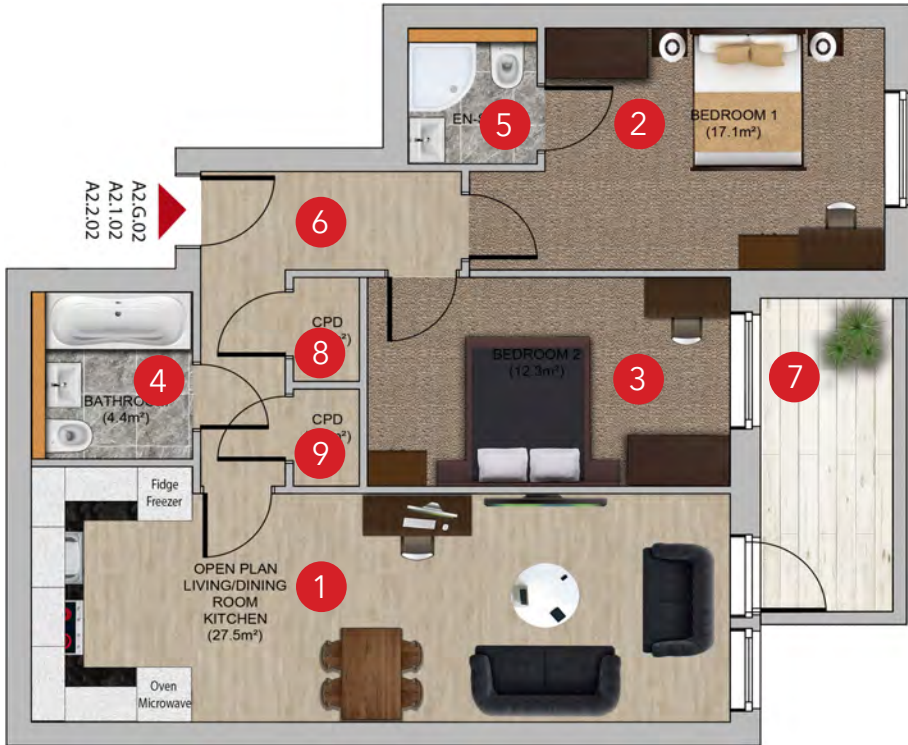
TOTAL AREA - 79.1 m<sup>2</sup>



More details regarding room sizes are available on the floor plans

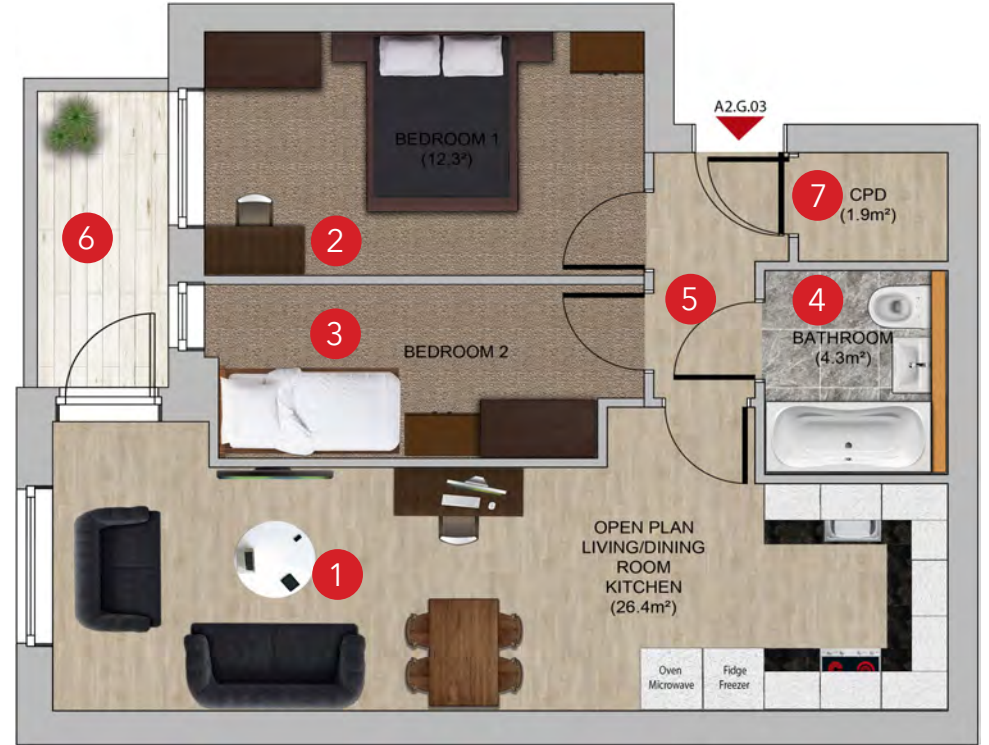
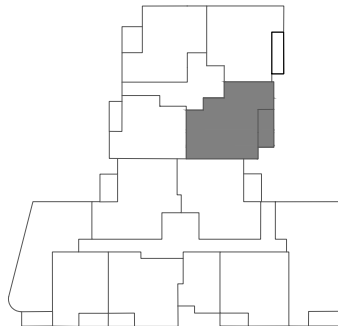


# 2 BEDROOM APARTMENTS



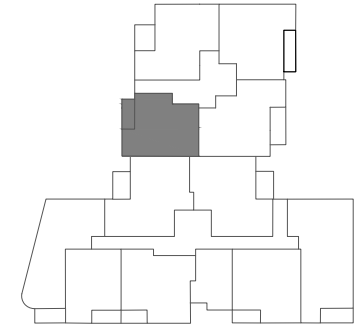
FLATS A2.G.02 / A2.1.02 / A2.2.02

1. Living room/Kitchen	-	27.5 m <sup>2</sup>
2. Bedroom 1	-	17.1 m <sup>2</sup>
3. Bedroom 2	-	12.3 m <sup>2</sup>
4. Bathroom	-	4.4 m <sup>2</sup>
5. En-suite	-	3.0 m <sup>2</sup>
6. Hall	-	7.0 m <sup>2</sup>
7. Balcony	-	8.0 m <sup>2</sup>
8. Storage room 1	-	1.1 m <sup>2</sup>
9. Storage room 2	-	1.1 m <sup>2</sup>
<b>TOTAL AREA</b>	-	<b>81.5 m<sup>2</sup></b>



FLATS A2.G.03

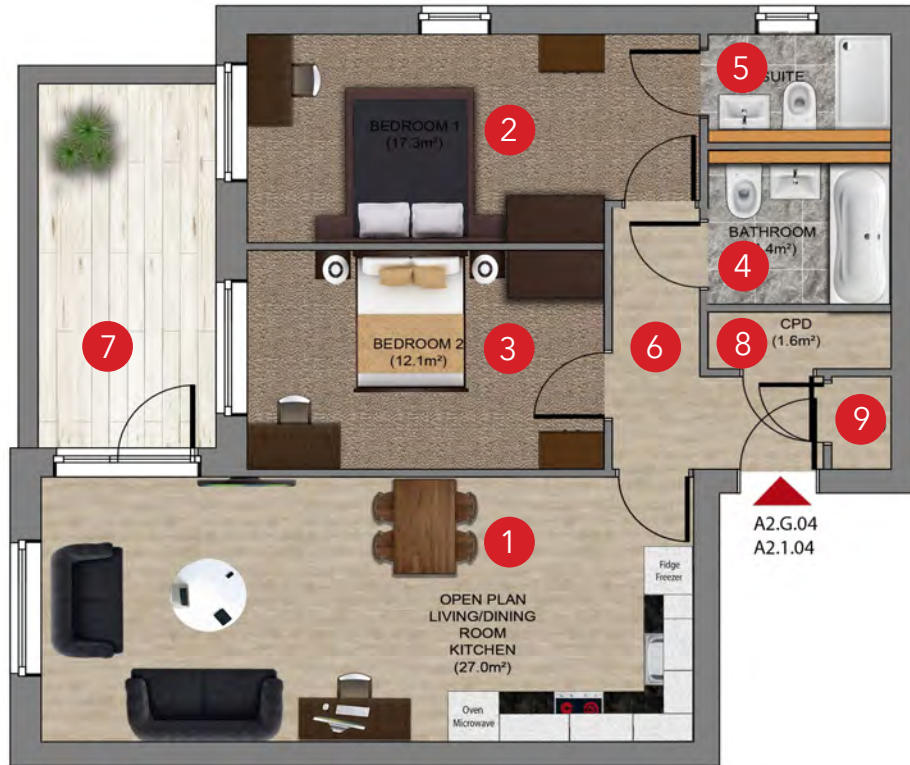
1. Living room/Kitchen	-	26.4 m <sup>2</sup>
2. Bedroom 1	-	12.3 m <sup>2</sup>
3. Bedroom 2	-	8.1 m <sup>2</sup>
4. Bathroom	-	4.3 m <sup>2</sup>
5. Hall	-	3.3 m <sup>2</sup>
6. Balcony	-	5.0 m <sup>2</sup>
7. Storage room 1	-	1.9 m <sup>2</sup>
<b>TOTAL AREA</b>	-	<b>74.0 m<sup>2</sup></b>



More details regarding room sizes are available on the floor plans



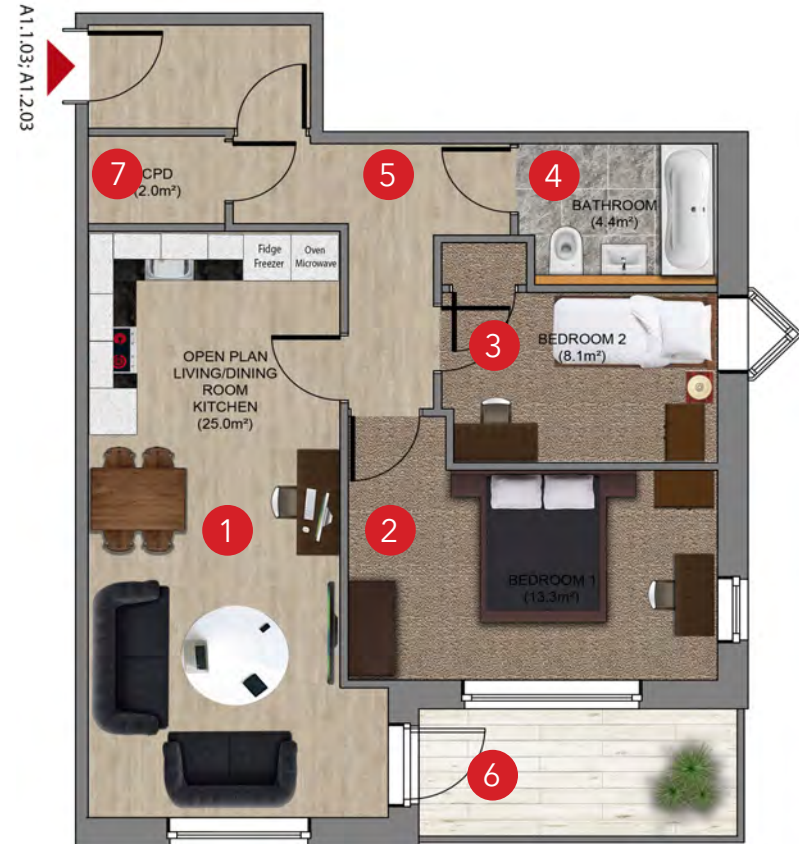
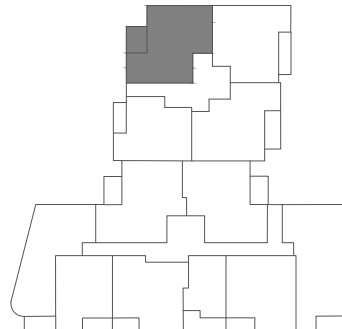
# 2 BEDROOM APARTMENTS



FLATS A2.G.04 / A2.1.04

- 1. Living room/Kitchen – 27.0 m<sup>2</sup>
- 2. Bedroom 1 – 17.3 m<sup>2</sup>
- 3. Bedroom 2 – 12.1 m<sup>2</sup>
- 4. Bathroom – 4.4 m<sup>2</sup>
- 5. En-suite – 3.0 m<sup>2</sup>
- 6. Hall – 5.7 m<sup>2</sup>
- 7. Balcony – 6.7 m<sup>2</sup>
- 8. Storage room 1 – 0.9 m<sup>2</sup>
- 9. Storage room 2 – 1.6 m<sup>2</sup>

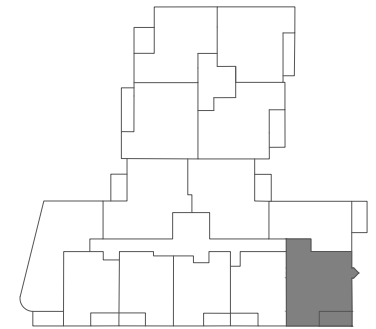
TOTAL AREA - 78.7 m<sup>2</sup>



FLATS A1.1.03 / A1.2.03

- 1. Living room/Kitchen – 25.0 m<sup>2</sup>
- 2. Bedroom 1 – 13.3 m<sup>2</sup>
- 3. Bedroom 2 – 8.1 m<sup>2</sup>
- 4. Bathroom – 4.4 m<sup>2</sup>
- 5. Hall – 10.0 m<sup>2</sup>
- 6. Balcony – 6.6 m<sup>2</sup>
- 7. Storage room 1 – 2.0 m<sup>2</sup>

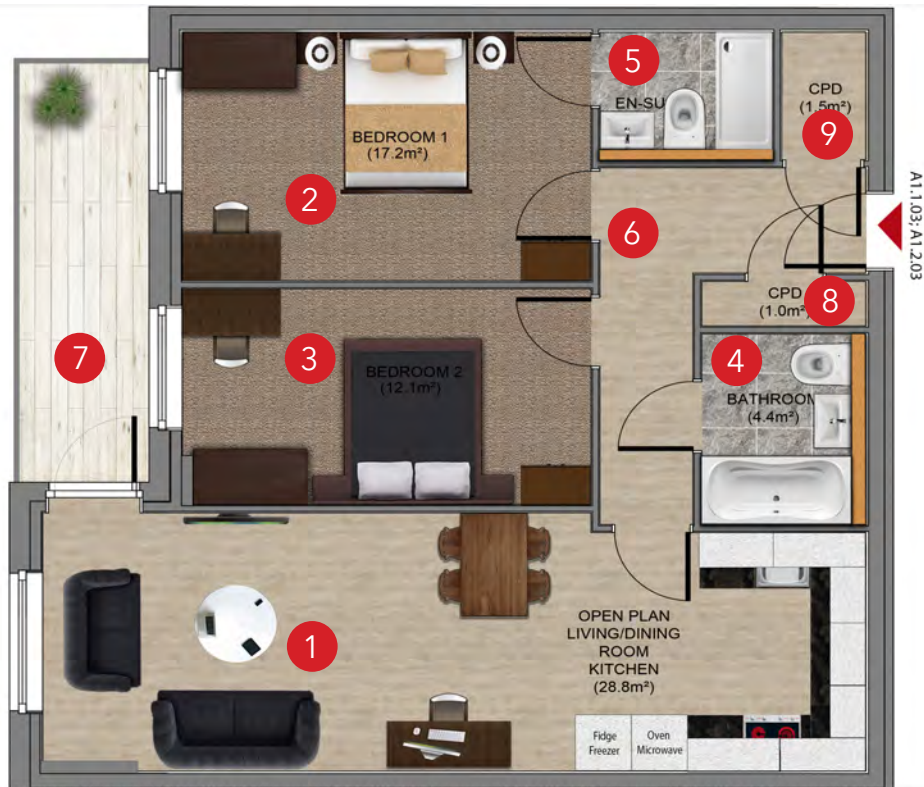
TOTAL AREA - 69.4 m<sup>2</sup>







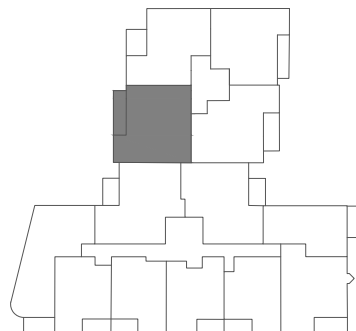
# 2 BEDROOM APARTMENTS



FLATS A2.1.03 / A2.2.03

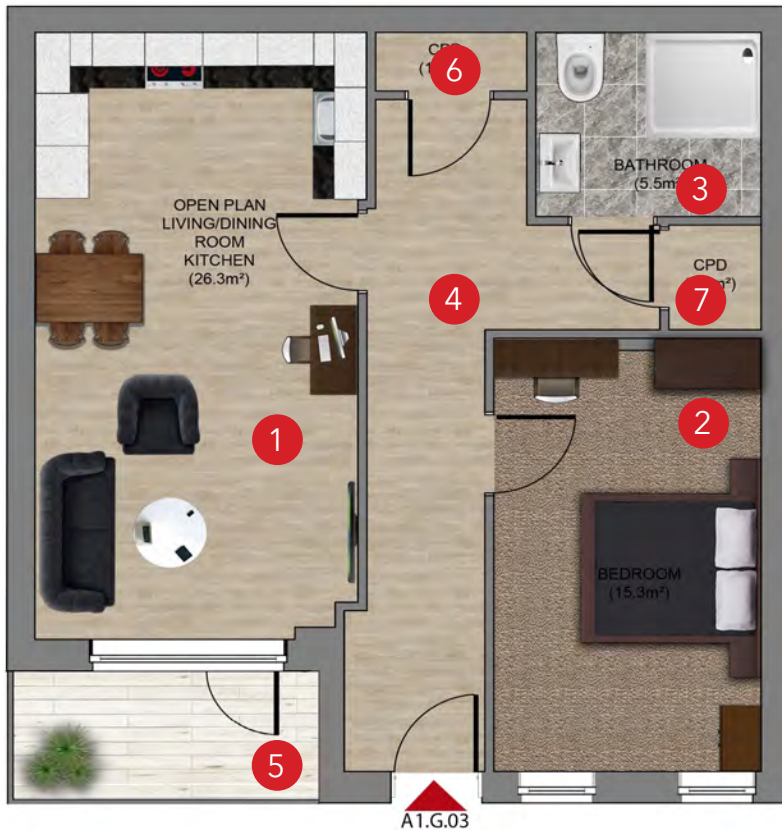
1. Living room/Kitchen	- 28.8 m <sup>2</sup>
2. Bedroom 1	- 14.0 m <sup>2</sup>
3. Bedroom 2	- 12.1 m <sup>2</sup>
4. Bathroom	- 4.4 m <sup>2</sup>
5. En-suite	- 3.0 m <sup>2</sup>
6. Hall	- 7.1 m <sup>2</sup>
7. Balcony	- 7.5 m <sup>2</sup>
8. Storage room 1	- 1.0 m <sup>2</sup>
9. Storage room 2	- 1.5 m <sup>2</sup>

TOTAL AREA - 79.4 m<sup>2</sup>



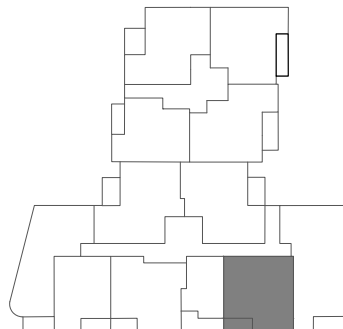


# 1 BEDROOM APARTMENTS



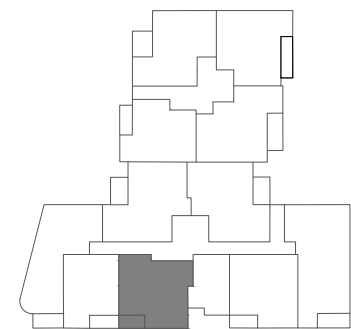
- 1. Living room/Kitchen – 26.3 m<sup>2</sup>
- 2. Bedroom 1 – 15.3 m<sup>2</sup>
- 3. Bathroom – 5.5 m<sup>2</sup>
- 4. Hall – 13.7 m<sup>2</sup>
- 5. Balcony – 4.3 m<sup>2</sup>
- 6. Storage room 1 – 1.2 m<sup>2</sup>
- 7. Storage room 2 – 1.3 m<sup>2</sup>

TOTAL AREA - 67.6 m<sup>2</sup>



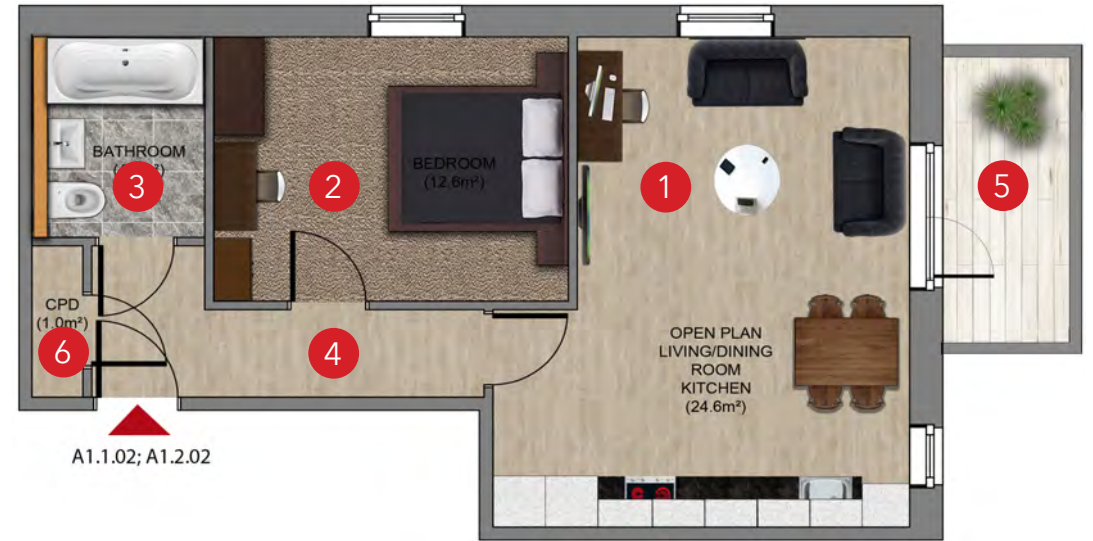
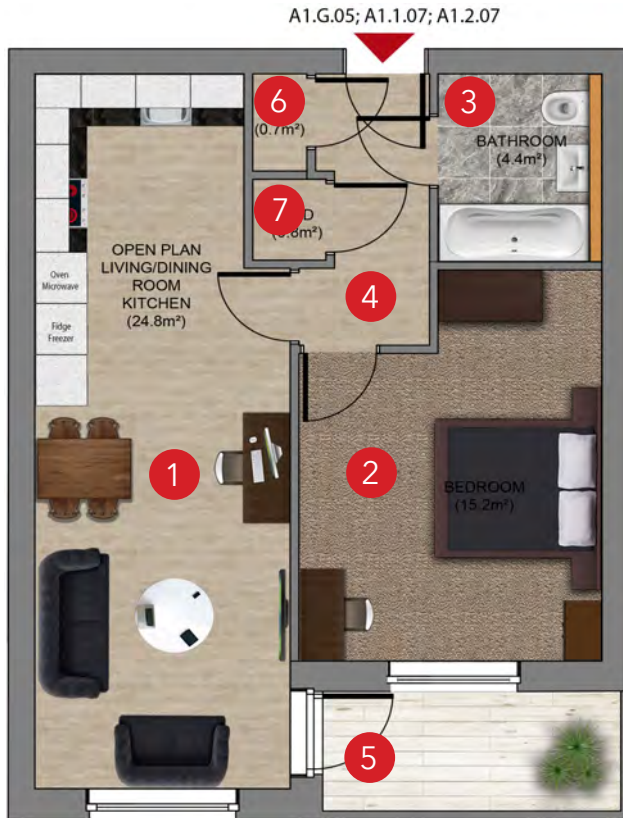
- 1. Living room/Kitchen – 26.4 m<sup>2</sup>
- 2. Bedroom 1 – 15.5 m<sup>2</sup>
- 3. Bathroom – 6.2 m<sup>2</sup>
- 4. Hall – 13.6 m<sup>2</sup>
- 5. Balcony – 4.8 m<sup>2</sup>
- 6. Storage room 1 – 1.2 m<sup>2</sup>

TOTAL AREA - 67.7 m<sup>2</sup>





# 1 BEDROOM APARTMENTS



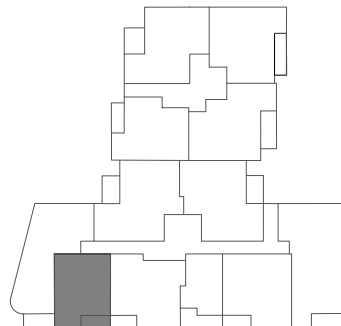
FLATS A1.G.05 / A1.1.07 / A1.2.07

FLATS A1.1.02 / A1.2.02

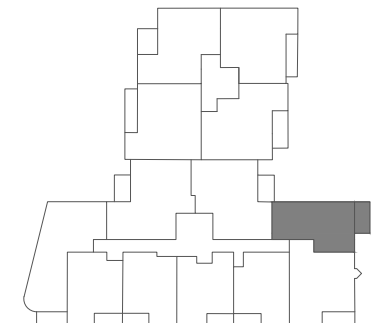
1. Living room/Kitchen	-	24.8 m <sup>2</sup>
2. Bedroom 1	-	15.2 m <sup>2</sup>
3. Bathroom	-	4.4 m <sup>2</sup>
4. Hall	-	4.3 m <sup>2</sup>
5. Balcony	-	4.8 m <sup>2</sup>
6. Storage room 1	-	0.8 m <sup>2</sup>
7. Storage room 2	-	0.7 m <sup>2</sup>

1. Living room/Kitchen	-	24.6 m <sup>2</sup>
2. Bedroom 1	-	12.6 m <sup>2</sup>
3. Bathroom	-	4.4 m <sup>2</sup>
4. Hall	-	5.6 m <sup>2</sup>
5. Balcony	-	6.5 m <sup>2</sup>
6. Storage room 1	-	1.0 m <sup>2</sup>

TOTAL AREA - 55.0 m<sup>2</sup>



TOTAL AREA - 54.7 m<sup>2</sup>





# 1 BEDROOM APARTMENTS

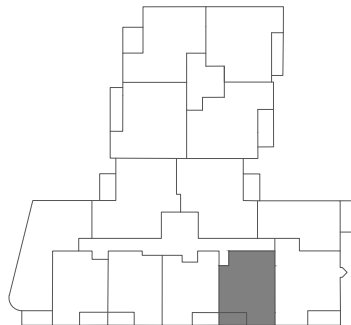
A1.1.04; A1.2.04



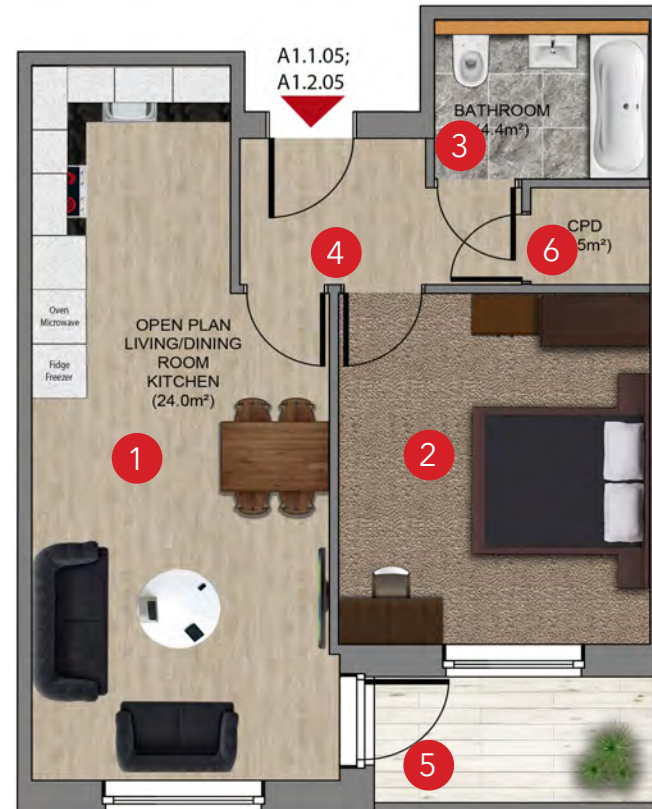
FLATS A1.1.04 / A1.2.04

- 1. Living room/Kitchen – 25.9 m<sup>2</sup>
- 2. Bedroom 1 – 13.0 m<sup>2</sup>
- 3. Bathroom – 4.3 m<sup>2</sup>
- 4. Hall – 4.6 m<sup>2</sup>
- 5. Balcony – 4.5 m<sup>2</sup>
- 6. Storage room 1 – 2.0 m<sup>2</sup>

TOTAL AREA - 54.3 m<sup>2</sup>



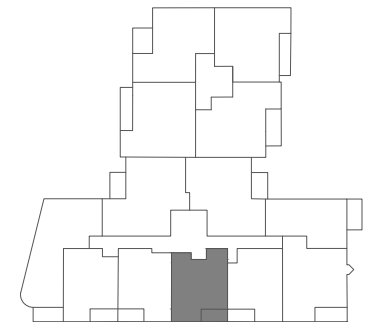
A1.1.05;  
A1.2.05



FLATS A1.1.05 / A1.2.05

- 1. Living room/Kitchen – 24.0 m<sup>2</sup>
- 2. Bedroom 1 – 13.8 m<sup>2</sup>
- 3. Bathroom – 4.4 m<sup>2</sup>
- 4. Hall – 4.6 m<sup>2</sup>
- 5. Balcony – 4.5 m<sup>2</sup>
- 6. Storage room 1 – 1.5 m<sup>2</sup>

TOTAL AREA - 52.8 m<sup>2</sup>

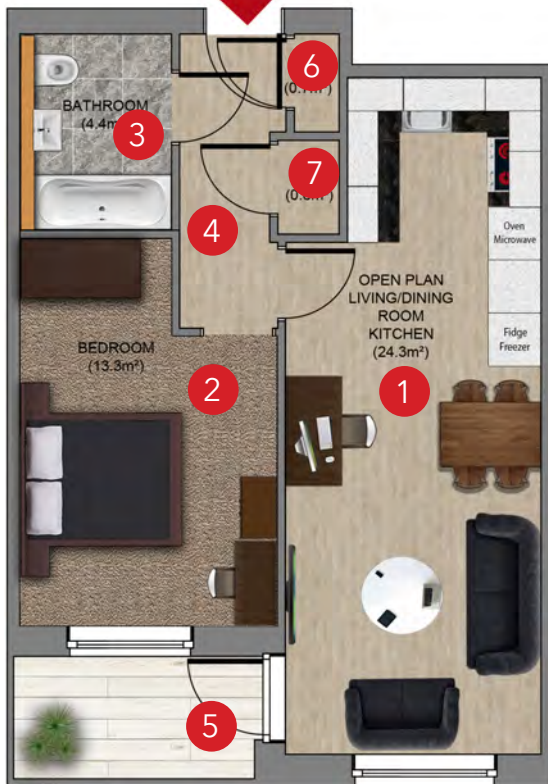






# 1 BEDROOM APARTMENTS

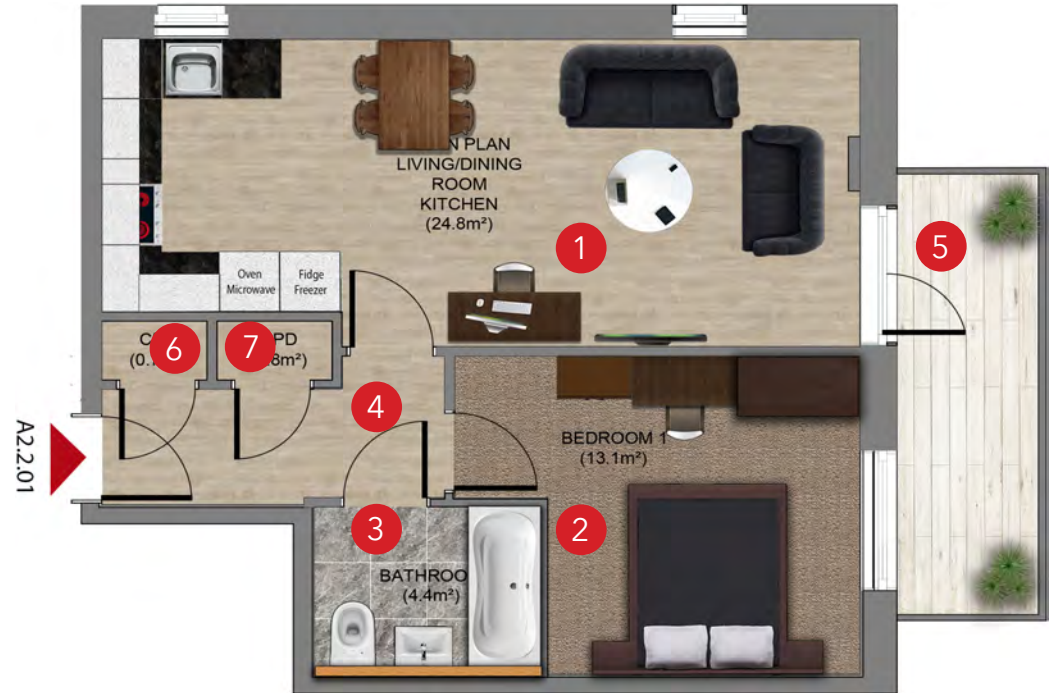
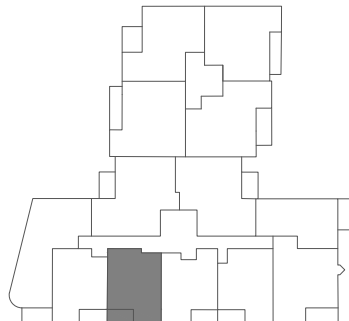
A1.1.06; A1.2.06



FLATS A1.1.06 / A1.2.06

- |                        |   |                     |
|------------------------|---|---------------------|
| 1. Living room/Kitchen | - | 24.3 m <sup>2</sup> |
| 2. Bedroom 1           | - | 13.3 m <sup>2</sup> |
| 3. Bathroom            | - | 4.4 m <sup>2</sup>  |
| 4. Hall                | - | 4.2 m <sup>2</sup>  |
| 5. Balcony             | - | 4.5 m <sup>2</sup>  |
| 6. Storage room 1      | - | 0.7 m <sup>2</sup>  |
| 7. Storage room 2      | - | 0.8 m <sup>2</sup>  |

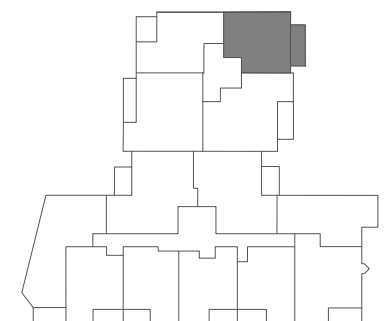
TOTAL AREA - 52.2 m<sup>2</sup>



FLAT A2.2.01

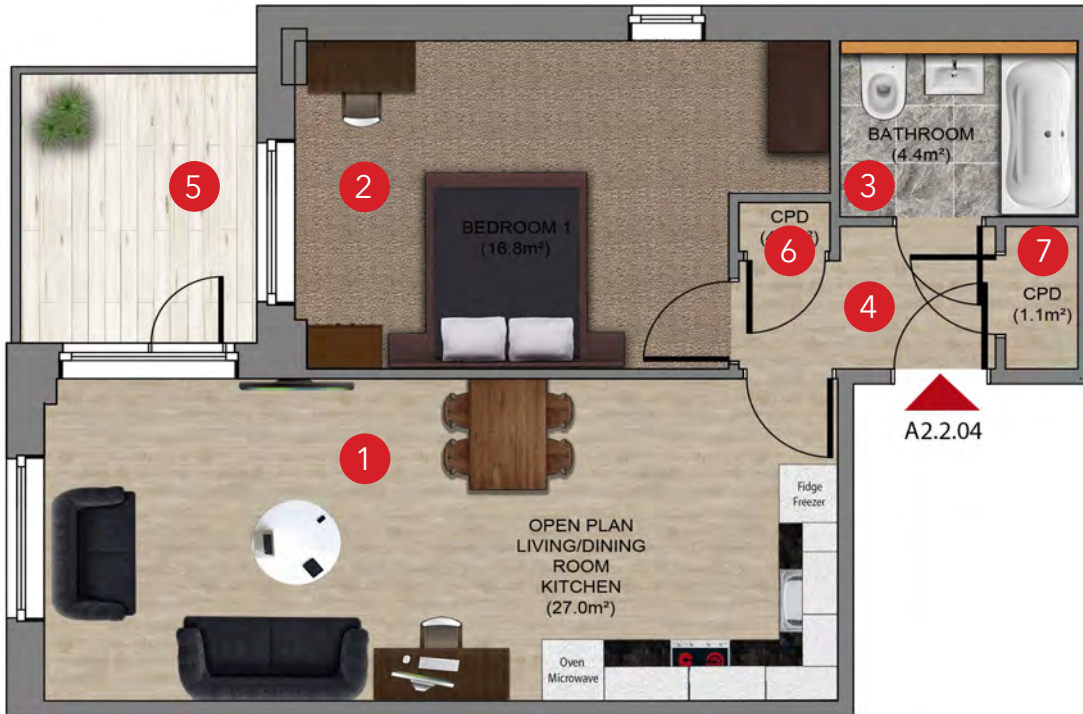
- |                        |   |                     |
|------------------------|---|---------------------|
| 1. Living room/Kitchen | - | 24.8 m <sup>2</sup> |
| 2. Bedroom 1           | - | 13.1 m <sup>2</sup> |
| 3. Bathroom            | - | 4.4 m <sup>2</sup>  |
| 4. Hall                | - | 4.6 m <sup>2</sup>  |
| 5. Balcony             | - | 7.0 m <sup>2</sup>  |
| 6. Storage room 1      | - | 0.7 m <sup>2</sup>  |
| 7. Storage room 2      | - | 0.8 m <sup>2</sup>  |

TOTAL AREA - 55.4 m<sup>2</sup>





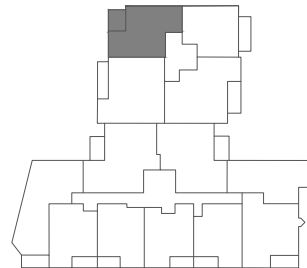
# 1 BEDROOM APARTMENTS



## FLAT A2.2.04

1. Living room/Kitchen	-	27.0 m <sup>2</sup>
2. Bedroom 1	-	16.8 m <sup>2</sup>
3. Bathroom	-	4.4 m <sup>2</sup>
4. Hall	-	3.5 m <sup>2</sup>
5. Balcony	-	7.3 m <sup>2</sup>
6. Storage room 1	-	0.5 m <sup>2</sup>
7. Storage room 2	-	1.1 m <sup>2</sup>

TOTAL AREA - 60.6 m<sup>2</sup>















# SPECIFICATIONS

- 4 floors
- 39 flats
- 1 bedroom flats – 15 units

- 2 bedroom flats – 21 units
- 3 bedroom flats – 3 units

- secure cycle parking spaces
- 2 elevators
- Roof garden

## Kitchen

- Kitchen Appliances - BOSCH
- Handles - integrated into design
- Hinges - soft-close
- Material - MDF
- Colour description - White
- Surface finish - Gloss
- Worktops and skirting - laminated wood
- Colour - black
- Splash back - Mosaic tile

## Bathrooms & Shower Rooms

### Bathrooms

- Bath Taps – GROHE
- Basin – 550mm ceramic basin Imex with chrome GROHE taps
- Bathroom cabinet – laminated cabinet with mirror above the basin
- WC – standard wall hung ceramic pan with soft close seat
- Bath screen – with Fresssh clear glass and silver colour frame
- Walls and floor finish – ceramic tiles 600x600
- Chrome GROHE towel holders

### Shower Rooms

- White trays made of acrylic sheet
- Taps – GROHE
- Sliding shower doors with chrome frame colour Merlyn Mbox, that comes with easy clean glass coating and with a high quality design, providing maximum strength and durability



1. These particulars have been prepared in all good faith to give a fair overall view of the property. If any points are particularly relevant to your interest in the property please ask for further information/verification.
2. Nothing in these particulars shall be deemed to be a statement that the property is in good structural condition or otherwise nor that any services, appliances, equipment or facilities are in good working order. Purchasers should satisfy themselves on such matters prior to purchase.
3. The photograph/s depict only certain parts of the property. It should not be assumed that any contents/furnishings/furniture etc. photographed are included in the sale. It should not be assumed that the property remains as displayed in the photograph/s. No assumptions should be made with regard to parts of the property that have not been photographed. Please ask for further information if required.
4. Any areas, measurements or distances referred to are given as a guide only and are not precise. If such details are fundamental to a purchase, purchasers must rely on their own enquiries.
5. Descriptions of the properties are subjective and are used in good faith as an opinion and not as a statement of fact. Please make further specific enquiries to ensure that our descriptions are likely to match any.

## Ceiling Heights

Ground Floor, 1st Floor & 2nd Floor  
2.50 metres (Floor to ceiling height)  
3rd Floor 2.63 metres (Floor to ceiling height)

## Windows

The XT66 "Energy" Casement Window System has been developed to further enhance the performance and energy efficiency of our window suites. It is eco-friendly, sustainable, fully certified, patented aluminium window system.

Glazing – Double glazing system

## Electrical Details

- Sockets – Chrome double sockets throughout with telephone point in master bedroom for Virgin/BT internet
- Lighting – Energy efficient spotlights throughout
- Smoke detectors – connected to mains
- Door entry system intercom in each flat
- Kitchen appliances
- Bosch 600mm chimney style stainless steel cooker hood
- Bosch 4-zone black ceramic hob
- Bosch stainless steel single oven
- Bosch integrated 60/40 fridge/freezer
- Bosch built-in stainless steel microwave
- Bosch integrated dishwasher 600mm or 450mm
- Bosch Washer/dryer

### Heating

- Keston combi gas boiler

### Ventilation

- Nuaire MEVDC-H multipoint continuous extract system

### Internal Details

- Flooring
- "Oak" – waterproof Laminated flooring and skirting
- Bedrooms – beige high-quality carpet
- Bathrooms – ceramic tiles 600x600
- Front doors – Multi point locking system
- "Oak" fire rated MDF Internal doors with architrave





## HOW TO FIND US

Eldridge House  
104-108 Hounslow Rd  
TW14 0BY

### By Car

Come off the M25 at exit 15 for M4 towards London. At the roundabout, take the 3rd exit onto the A312 to London. At the roundabout take the third exit onto the Parkway. Continue at the roundabout onto Causeway. At the end turn left to Faggs Road continue straight. On junction with Hounslow Road turn left. On Hounslow Road take the 3rd right turn. **Eldridge House** will be at the end of private Road.

### By Public Transport

You can take the Piccadilly line to Hatton Cross station towards Heathrow Airport and then it takes about 1 minutes to walk to the «Hatton Cross» station (Stop C)» bus stop and take the 490, 285 or 90 bus (9 minutes) to the «Feltham Assembly Hall (Stop S)» bus stop then walk (5 minutes) to **Eldridge House**.

Or you can come from «Waterloo» station (South Western Railway) take the train to «Feltham» station (26 minutes), then walk to the «High Street Feltham (Stop F)» bus stop (3 minutes) and take the 285 Kingston bus to «Harlington Road East (Stop E)» bus stop and then walk (5 minutes) to **Eldridge House**.



