



Bowmer House, Tideys Mill, Partridge Green, Horsham

Guide Price £230,000

Flat 4

Bowmer House Tideys Mill, Horsham

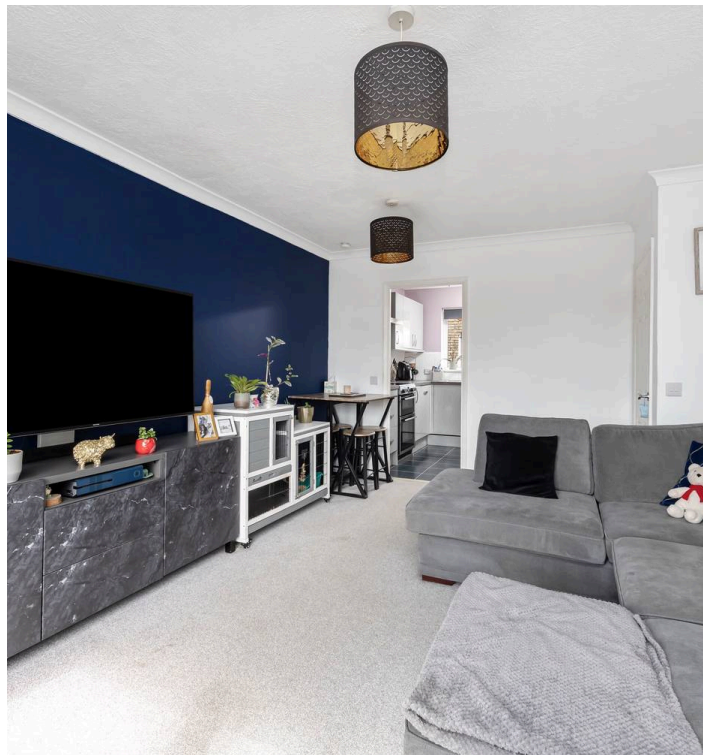
A superb two-bedroom, first-floor apartment that offers a unique opportunity to reside in the village setting of Partridge Green. This modern and inviting property boasts an open plan and spacious living/dining room, perfect for both relaxing nights in and entertaining guests. The living area offers access to a private balcony, creating the ideal space to enjoy a morning coffee or unwind after a long day. The property features a modern kitchen, complete with sleek countertops, providing a functional and stylish space for culinary enthusiasts. For added convenience, this apartment includes allocated private parking, ensuring a stress-free return home at any time of day.

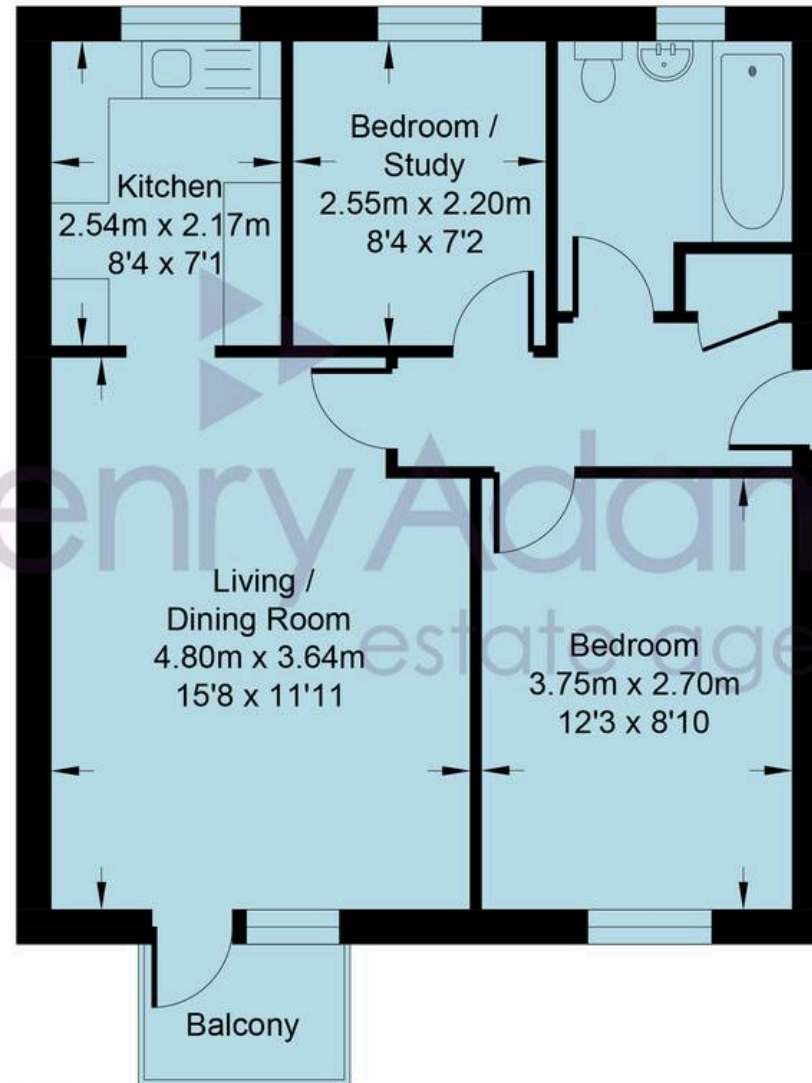
Located in Partridge Green Village, residents will benefit from the proximity to local amenities, charming local pubs, and restaurants, providing a true taste of village living. Additionally, nature enthusiasts will appreciate the nearby open countryside and the Downs Link Trail, offering opportunities for peaceful walks and outdoor adventures just moments from the doorstep.

Agents Note: Leasehold - 125 year lease from 1990, Service Charge £160 per month & Ground Rent of £200 per annum (Approx..) Tideys Mill Management Company.

Council Tax band: B Tenure: Leasehold

EPC Energy Efficiency Rating: D





FIRST FLOOR



Tideys Mill

Approximate Area = 523 sq ft / 48.6 sq m

Total = 523 sq ft / 48.6 sq m

For identification only - not to scale



Henry Adams - Horsham

Henry Adams HRR Ltd, 50 Carfax, Horsham - RH12 1BP

01403 253271

horsham@henryadams.co.uk

www.henryadams.co.uk

Agents Note - Our particulars are for guidance only and are intended to give a fair overall summary of the property. They do not form part of any contract or offer, and should not be relied upon as a statement or representation of fact. Measurements, areas and distances are approximate only. Photographs may include lifestyle shots and pictures of local views. No undertaking is given as to the structural condition of the property, or any necessary consents or the operating ability or efficiency of any service, system or appliance. Please ask if you would like further information, especially before you travel to the property.