



## Tideys Mill, Partridge Green

Guide Price £250,000



# Tideys Mill

Partridge Green, Horsham

A Superb two bedroom terraced house located in the popular village of Partridge Green. To the ground floor there is a modern fitted kitchen with ample worktop space and wall and floor kitchen units. The lounge/sitting room has a door to the private courtyard garden offering ideal outside space and outside entertaining. There are stairs leading to the first floor where as the floorplan shows, the property offers two good sized bedrooms and a bathroom with shower over bath, wash basin and a low level WC.

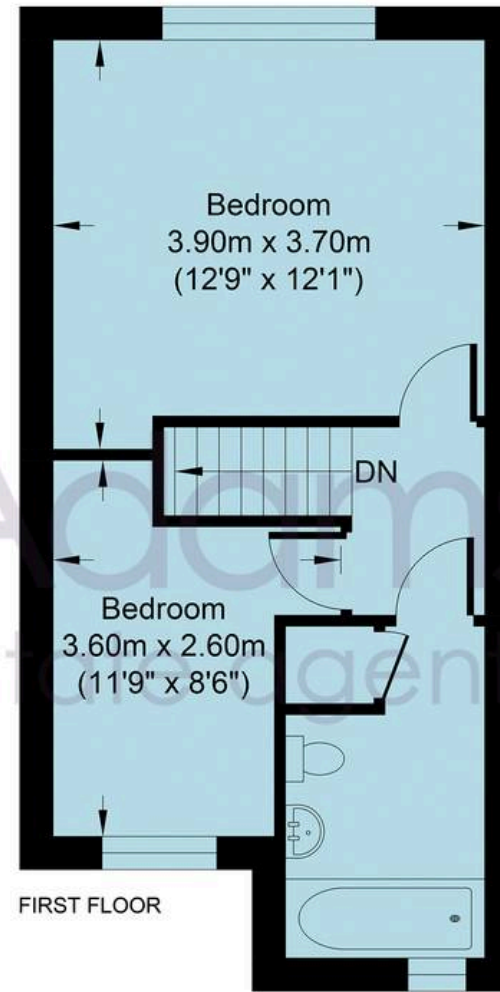
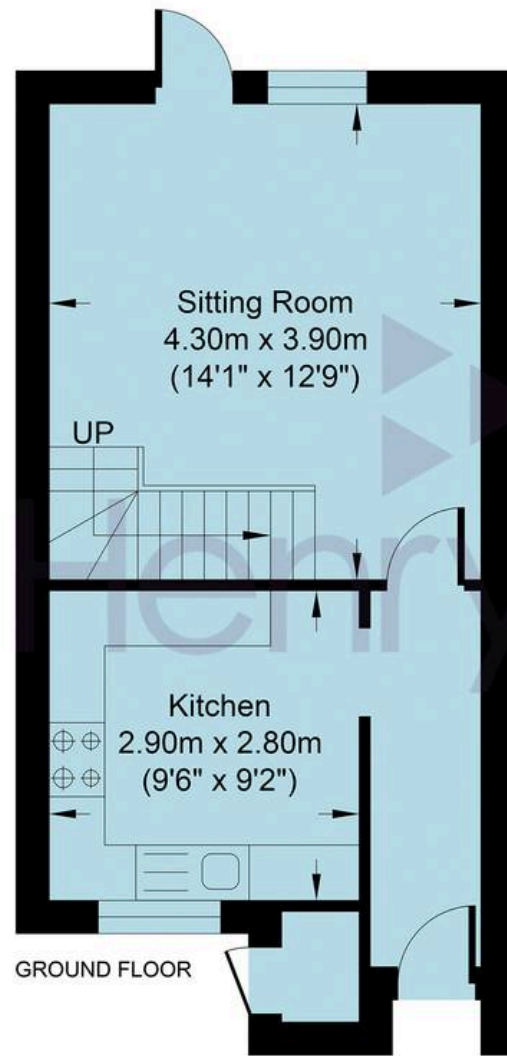
There is an allocated parking space to the front of the property.

Situated in the popular village of Partridge Green. The village has a highly regarded butchers, local shops, primary school and is within approximately eight miles of Horsham town centre and the village is serviced by buses hourly to both Brighton and Horsham. The village is surrounded by the beautiful countryside of Sussex, criss-crossed with footpaths and bridle ways. Partridge Green has good access to the A281, A24, Gatwick Airport. Horsham mainline station provides links to London Bridge and Victoria.









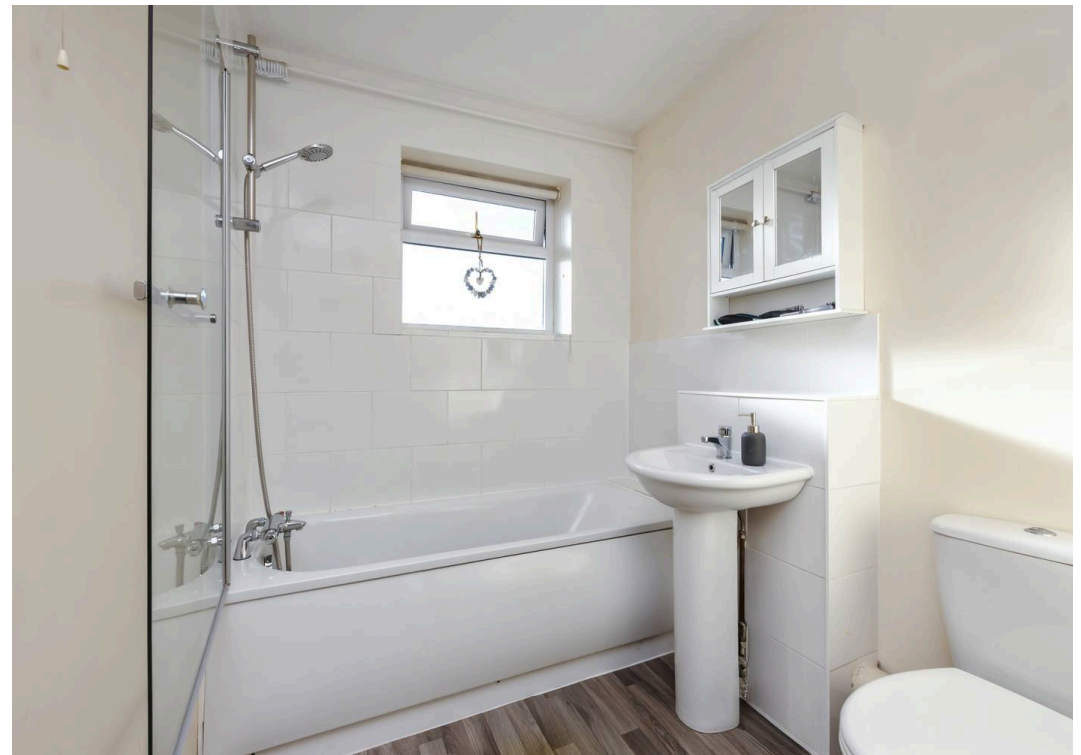
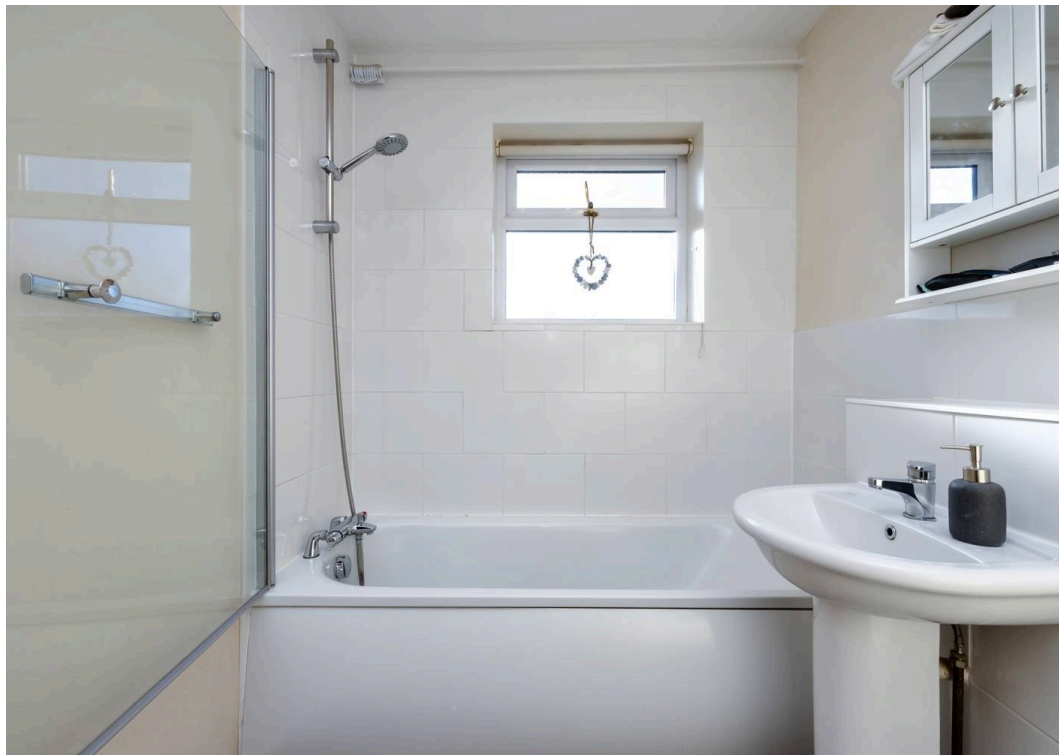
**High Street**

Approximate Area = 641.20 sq ft / 59.57 sq m

Total = 641.20 sq ft / 59.57 sq m

For identification only - not to scale







Superb two bedroom terraced house  
Modern fitted kitchen with ample worktop space and wall and floor kitchen units.

Private courtyard garden

Allocated parking space to the front of the property.

Located in the popular village of Partridge Green

Agents Note: Monthly Estate Charge including water = £56 pcm

.Council Tax band: C

Tenure: Freehold

EPC Energy Efficiency Rating: D

EPC Environmental Impact Rating: E











## Henry Adams – Horsham

Henry Adams HRR Ltd, 50 Carfax, Horsham – RH12 1BP

01403 253271

[horsham@henryadams.co.uk](mailto:horsham@henryadams.co.uk)

[www.henryadams.co.uk/](http://www.henryadams.co.uk/)

Agents Note – Our particulars are for guidance only and are intended to give a fair overall summary of the property. They do not form part of any contract or offer, and should not be relied upon as a statement or representation of fact. Measurements, areas and distances are approximate only. Photographs may include lifestyle shots and pictures of local views. No undertaking is given as to the structural condition of the property, or any necessary consents or the operating ability or efficiency of any service, system or appliance. Please ask if you would like further information, especially before you travel to the property.